

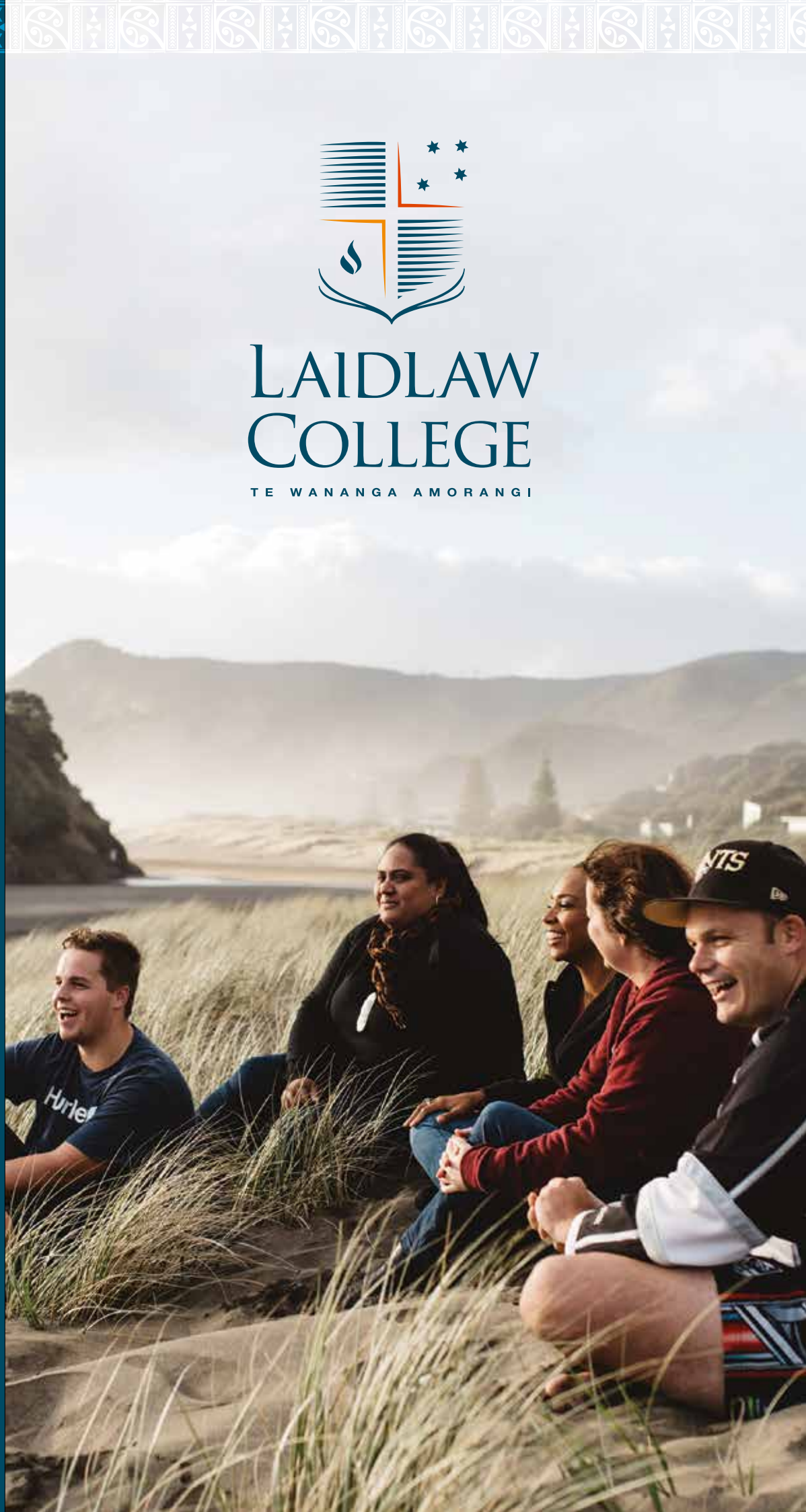
Prospectus

www.laidlaw.ac.nz



LAIDLAW
COLLEGE

TE WANANGA AMORANGI





Our Vision

A world shaped by love, compelled and informed by the Gospel.

Our Mission

To equip students and scholars to renew their communities with a faith as intelligent as it is courageous.

Welcome

Whakaaroaro tataotanga
Whakaaroaro whanui
Whakaaroaro apopo
Hai whakaponohia tou oranga

Think deeply
Think widely
Think about the future
In order to live faithfully

Tēnā koe,

There are two questions that we ask of every student who is considering studying at Laidlaw:

How are you growing and deepening your faith to follow Jesus through all of life?



Who are you called to be, and how do you need to prepare yourself to fully answer this call?

Laidlaw College is an extraordinary community of people, shaped by Scripture, and committed to thinking deeply and well about the hope that we have in Jesus. It is a privilege to lead and serve a talented team who have spent their lives maturing in wisdom so that they can share the fruits of their study and practical experience with others.

We would love to talk with you about whether Laidlaw College should be part of your answer to those two questions, as we work to redeem the world in service of our risen Lord.

Please don't hesitate to contact us.

In His service,

Dr Roshan Allpress
National Principal/CEO



Robert A. Laidlaw

There are few characters more prominent in our story than Robert Laidlaw (1885–1971), one of our founders and President of the College for twenty years.

Robert Laidlaw was an outstanding businessman, philanthropist and influential Christian leader. Founder of the Farmers department stores, his faith underpinned his vocation in business. He had wide-ranging influence in churches and communities across Aotearoa New Zealand and around the world. His life story exemplifies what we hope for all our graduates: a deep commitment to the Gospel, an intelligent and integrated faith grounded in the Bible, and lifelong engagement with the task of renewing the world.



Contents

Study Pathways	03
What we offer	06
Our Campuses	13
Study by Distance	14
What you can study	15
School of Theology	17
Laidlaw Graduate School	19
School of Social Practice (Counselling and Education)	21
Scholarships and Funds	23
Application Process for Domestic Students	24
Admission Requirements	25
International Students	32
How to apply and enrol	33
Application Process for International Students	34
Graduate Profile	35

Interested or have questions?

Contact us on 0800 999 777 or
info@laidlaw.ac.nz.

Laidlaw College is driven by the question: how do we live out the Gospel in a world that is in need of the grace of God?

As an NZQA accredited university-level educational institution, Laidlaw College is committed to the preparation of graduates who will faithfully serve their communities and courageously pursue the task of reimagining and renewing the world. Through biblical and theological study and professional training, we equip students to live with faith, hope, love and grace.

Students at Laidlaw are stepping into a long tradition. Founded in 1922 with just ten students, our mission has always been to train Christian leaders with a Biblical imagination for Church and Society. Laidlaw graduates work in churches, politics, social enterprise, social work, teaching, counselling, medicine, finance, agriculture, and any field imaginable. What sets them apart as leaders is that they know why they lead.

We are New Zealand's largest theological college and the highest-ranked non-university research institute in the country. As an interdenominational college we serve churches across the denominational spectrum, united by our common hope in the Gospel of Jesus Christ.

Our range of qualifications includes entry-level Certificates and Diplomas, through to Bachelors, Masters and Doctoral degrees, with key programmes in Theology, Ministry, Education and Counselling. Students study full-time or part-time, either at one of our campuses in Waitakere, Manukau and Christchurch, through one of our partner colleges and churches, or via distance learning anywhere in the world.

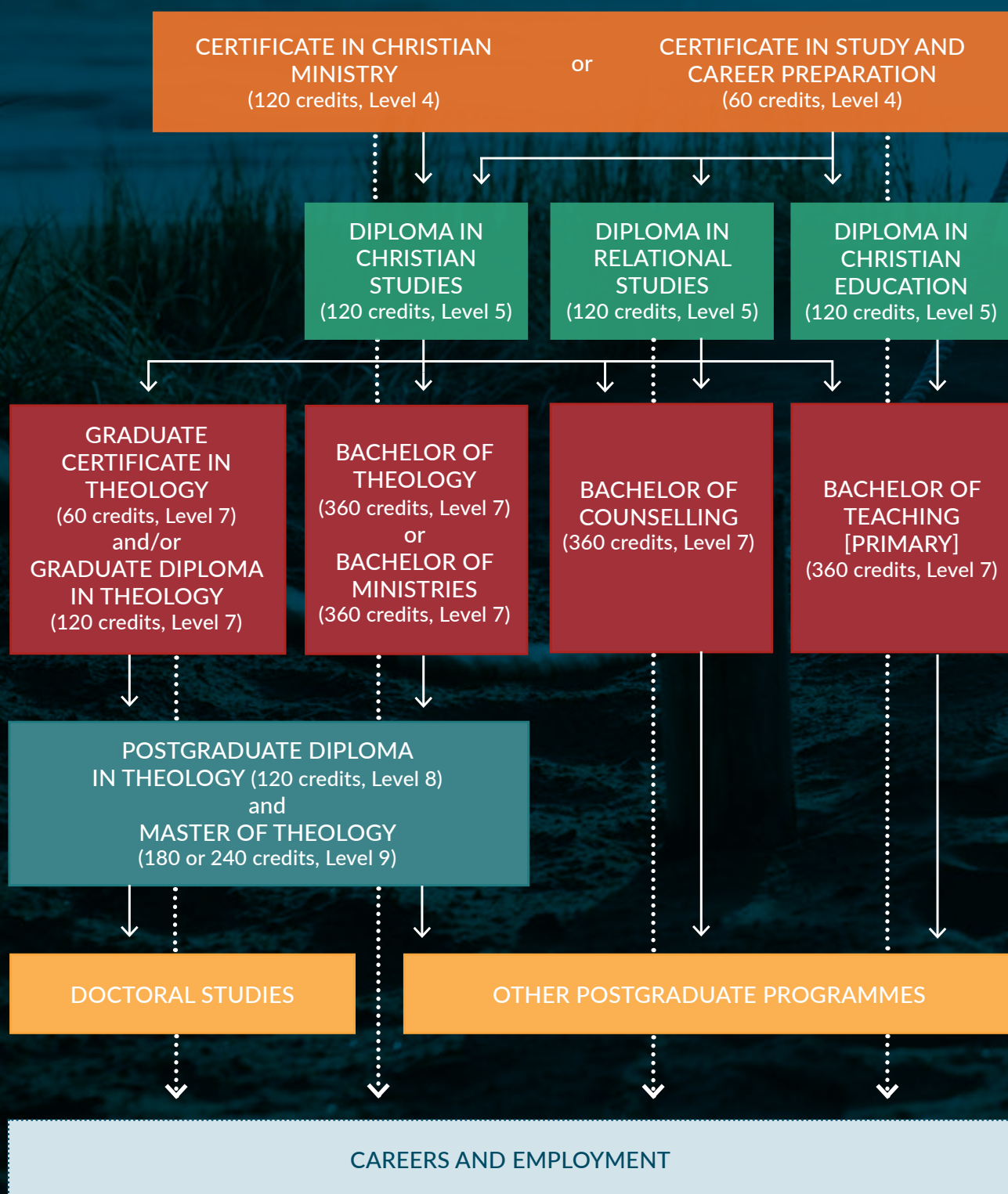
Laidlaw's integrated approach to learning facilitates deep and imaginative learning, and honours the distinctiveness of each student's voice. The College brings together men and women from many cultures, with experiences that are distinct, and passions and gifts that are unique, united by the hope that we have in Jesus.

Come join us.





Study Pathways





“

*Your word is a lamp for my feet,
a light on my path.*

Psalm 119:105



“

Then you will shine among those around you like stars in the sky, as you hold firmly to the word of life.

Philippians 2:15b-16a

What we offer...

LEVELS	QUALIFICATION	DURATION†	CREDITS	INTAKES††	SCHOOL	LOCATION††
LEVELS 4-5	CERTIFICATE IN STUDY AND CAREER PREPARATION*	Full-time for one semester	60	Feb & Jul		Henderson, Manukau
	CERTIFICATE IN CHRISTIAN MINISTRY	Full-time for one year	120	Feb & Jul	Theology	Partner Colleges
	DIPLOMA IN RELATIONAL STUDIES	Full-time for one year	120	Feb & Jul	Social Practice	Henderson, Christchurch, Manukau
	DIPLOMA IN CHRISTIAN STUDIES	Full-time for one year	120	Feb, Jul & Nov	Theology	Henderson, Christchurch, Manukau, Distance Learning, Partner Colleges
	DIPLOMA IN CHRISTIAN EDUCATION	Full-time for one year	120	Feb & Jul	Social Practice	Henderson, Christchurch**, Manukau
LEVELS 6-7	BACHELOR OF COUNSELLING	Full-time for three years	360	Feb & Jul	Social Practice	Henderson, Christchurch
	BACHELOR OF TEACHING (PRIMARY)	Full-time for three years	360	Feb & Jul	Social Practice	Henderson
	BACHELOR OF MINISTRIES	Full-time for three years	360	Feb, Jul & Nov	Theology	Henderson, Christchurch, Distance Learning
	BACHELOR OF THEOLOGY	Full-time for three years	360	Feb, Jul & Nov	Theology	Henderson, Christchurch, Distance Learning
	GRADUATE CERTIFICATE IN THEOLOGY	Full-time for one semester	60	Feb, Jul & Nov	Theology	Henderson, Christchurch, Distance Learning
LEVELS 8-9	GRADUATE DIPLOMA IN THEOLOGY	Full-time for one year	120	Feb, Jul & Nov	Theology	Henderson, Christchurch, Distance Learning
	POSTGRADUATE DIPLOMA IN THEOLOGY***	Full-time for one year	120	Feb & Jul	Theology	Henderson
	MASTER OF THEOLOGY***	Full-time for 12-24 months	180 or 240	Feb & Jul	Theology	Henderson

* Not available for International Students.

** Subject to approval.

*** Some courses available in Christchurch.

† Part-time options available for most programmes.

†† Programme availability dependent on viability and subject to change.



Committed to the Gospel

At the heart of the Christian faith is the person of Jesus: God and man, creator and redeemer, crucified and resurrected, carpenter and King.

We at Laidlaw are committed to living out of the hope that we have in Jesus.

As revealed in the Bible, he is the fulfilment of God's unfolding work in history to redeem the world. He is the source of knowing and meaning – the truest example we have of what it means to be human.

We are a College community that seeks to form students to be more like Jesus: in wisdom, character and in working to see redemption in the world.

Study at Laidlaw is therefore not just preparation for a job, but an invitation to read the Bible more richly, to know God and to be transformed by the renewing of your mind, and to living a life of missional engagement.

Formation for lifelong leadership

Sustaining faithful leadership over the long term is no easy ride.

Study is one way to ensure that you dig deep wells, so that your faith will last through the dry and dark times that we all experience.

At Laidlaw, our programmes are designed to help you think through who you are. We train leaders who can articulate why they serve, and who have done the work to integrate their faith into their work.

Whatever you are called to, spending time to deepen your knowledge of God is an investment that will bear fruit over many years, and into future generations.



Equipping leaders for all areas of society

Since 1922, Laidlaw has been about training leaders for church *and* society.

We do offer practical and formational training for pastors and ministers, but we also prepare people for leadership in every sphere of society.

We believe that God has called Christians to work for the renewal of their communities, cultures, economies and environments – to humbly pursue justice and grace everywhere.

Through our School of Social Practice, we train teachers and counsellors, and offer professional training for a wide variety of work with people.

Our School of Theology offers programmes for those wanting to integrate their faith into their vocation, with many students studying part time while pursuing their careers.

Laidlaw College graduates have gone on to serve as school principals, Members of Parliament, family counsellors, agricultural entrepreneurs, humanitarian aid workers, conservationists, social workers, university lecturers, and in countless other roles.

We would love to help equip you too to lead.





Staff who live what they teach

At Laidlaw you will meet lecturers, tutors and others who have spent years gaining wisdom and experience in ministry, professional life, and in their own spiritual walks.

We are privileged to have a world-class teaching team who combine scholarly brilliance, many years of practical experience, and a deep and active personal faith.

We invite all our students to participate in what is more than just an educational programme, but a vibrant community of worship, research, discipleship and fellowship.



Supportive and diverse community

Laidlaw is an interdenominational college, with lecturers and students from many churches, united by their faith in Christ. We hold strongly to our evangelical faith, and encourage students to explore the richness of their own and other denominational traditions in the light of Scripture and the ongoing work of the Spirit in the world.

We are proud of our long tradition of bicultural engagement, including our commitment to the Treaty of Waitangi, and to developing Māori leaders and indigenous theology.

We are a multicultural community, with staff and students from many cultures, inspired by the vision of the new creation in which every nation and language declares the glory of God.

We are a supportive community, committed to supporting the success of students with disabilities and other barriers to tertiary study. Every student at Laidlaw has access to personalised learning support from our dedicated team of specialists.

World class teaching and research

As a university-level educational institution, we provide world-class education across our programmes.

We are the highest-ranked non-university research institution in New Zealand, and a leader in theological education in Australasia. Our teaching is informed by a vibrant research culture, including visiting scholars and practitioners from around the world.

Laidlaw graduates are highly sought after in their fields, and Laidlaw qualifications are fully-accredited through NZQA and are internationally recognised.



Our Campuses

Laidlaw College has campuses in Henderson and Manukau (Auckland), and a campus in Papanui (Christchurch). Our campuses are configured for intercampus video teaching, and together with distance learning options, students can flexibly structure their study to meet their needs. Many students pick what's right for them, choosing a combination of on-campus and distance courses to complete their programme of study.

HENDERSON

Our Henderson Campus is situated in West Auckland with the Waitakere Ranges and west coast beaches close by and a sports stadium across the road. Students enjoy vibrant community life supported by purpose-built facilities, student accommodation, well-equipped lecture rooms, an extensive and well-resourced library and a lively café.



MANUKAU

Our Manukau Campus is conveniently located in the heart of the Manukau CBD in South Auckland. Located close to public transport, this vibrant, high quality, intercultural campus has lots of character and great spaces for community to form.



CHRISTCHURCH

Our Christchurch Campus sits in the western suburbs of Papanui, in a custom-designed building that celebrates learning, community and creativity. The smaller campus and class sizes make study at this campus relationally rich, supported by a great library and a comfortable café area where students and staff can take a break or work together in small groups.



Laidlaw also partners with a number of other training providers around the country. Please see the website for further study options.

Study by Distance

Laidlaw Theology students have the option to study completely by distance in most of our undergraduate Theology programmes – from diploma through to degree. Our distance students are well supported by a dedicated team of tutors and support staff, as well as opportunities for interaction with other students.

Many of our students choose to complement their campus based programmes with distance courses. By choosing this flexible mode of study you can choose where and when to study and fit it around your on-campus study and other commitments. Other flexible study options include block courses, evening courses, internship training, summer semester distance courses, and part-time study.



What you can study

Bible and Theology

Studying theology is about seeking wisdom to live faithfully in the world. Theological study at Laidlaw builds on our strengths in Biblical study, systematic theology and formation, and is ideal for those who are seeking to deepen and integrate their faith into every area of life, as well as those preparing for professional Christian ministry.

Christian Leadership

Our Christian leadership programmes are designed to combine practical experience in mission and ministry with theological study and formation. Students are mentored by established leaders, and serve in church or ministry contexts, while studying in preparation for lifelong leadership in church, cross-cultural mission, or communities.

Vocational Theology



Education

Our education and teaching programmes provide full-accredited preparation for teaching in primary and intermediate schools. Uniquely in New Zealand, our courses are taught by experienced teacher-educators and by theologians, who will help you ground your professional practice in the Gospel of faith, hope and love, and to engage with children and young people as people made in the image of God.

Counselling

Our counselling and relational studies programmes prepare students to serve others through healing hearts, minds and relationships. With Christian thought and practice integrated throughout, and with a uniquely immersive mix of classroom, practicum, group and mentored learning, our qualifications are for those who want to build a career in counselling, or those who want to develop lifelong skills for working with people.

Whatever your calling and career, it is critical to be able to integrate your faith into your work. Laidlaw's vocational theology courses help those in any walk of life think theologically about what they do, and provides a context for creative thinking about how our work can participate in the renewing of the world.

School of Theology

The School of Theology offers a range of programmes from certificate to postgraduate level – rich in practical experience and in-depth knowledge designed to equip students with a faith as intelligent as it is courageous.

Our programmes aim to give students a deeper appreciation of the Gospel and Scripture and to learn to think and act imaginatively, critically, faithfully and practically in the everyday world. Our students will continue to be formed in their Christian faith, and be able to connect the reality of their faith to their own lives and the lives of those around them.

Certificate in Study and Career Preparation (CertPrep)*

The **Certificate in Study and Career Preparation** assists students with the development of key skills, capabilities, knowledge and attributes needed to succeed in tertiary education including degree level. The programme provides a foundation for students who want to continue into Laidlaw programmes in Theology, Education or Counselling through a mixture of academic skills development and reflection on Christian faith and life. The programme focuses on the following key areas: Academic readiness, managing your learning, and two areas related to a chosen career pathway in Counselling, Education or Christian Studies.

Certificate in Christian Ministry (CertCM)†

The **Certificate in Christian Ministry** provides Christian churches and their agencies with people who can support and enhance their communities and ministries. Students in the CertCM (Internship) develop knowledge, skills and experience by connecting their own reflection on the Christian faith with real life practical contexts, equipping them for service in the church and wider contexts. The CertCM (Internship) programme also provides a pathway into further study for personal and professional development.

This programme is available through our Partner Colleges by distance learning and on-site.

Diploma in Christian Studies (DipCS)

The **Diploma in Christian Studies** provides students with an introduction to biblical studies, theological studies and spiritual formation and prepares them to live out the Gospel of Christ, engaging thoughtfully and compassionately in the world. It can be taken with tracks in: **Biblical Studies; Christian Leadership†; Christian Thought and History; Pastoral Ministry; Mission and Intercultural; and Youth Ministry.**

The **Christian Leadership track†** equips people to evaluate and deliver ministry programmes within their context, to think deeply about their faith, and to lead a wide range of Christian operations. Students are equipped with a biblical and theological foundation upon which applied Christian leadership skills are developed through internship in real life practical contexts. For further information regarding DipCS tracks please see the Laidlaw College website.

Students who complete the DipCS may staircase into the second year of either the Bachelor of Ministries or the Bachelor of Theology degrees. If this is envisaged then particular consideration must be given to the track chosen so as to achieve an appropriate foundation for the desired degree.

Bachelor of Theology (BTheol)

The **Bachelor of Theology** is designed to provide students with a solid foundation in biblical studies, theological knowledge and reflection. It provides an in-depth engagement with Scripture, Christian thought and history and equips students with the skills they need for pastoral and missional leadership, as well as other ministries. It is also strongly recommended for those seeking theological grounding for higher academic qualifications in biblical and theological studies.

Bachelor of Ministries (BMin)[†]

The **Bachelor of Ministries** is designed for those who feel a calling to Christian ministry, whether that be in a local church, an intercultural missions context or in the wider community. Drawing together practical ministry experience gained through an internship placement, with deep biblical and theological thinking, students will acquire the skills and knowledge for working out the Gospel in life and ministry. They will be challenged and mentored in their ministry journeys and will be encouraged to develop a heart for people and a vision of the Gospel that embraces the whole person.

Graduate Certificate in Theology (GradCertTh) and Graduate Diploma in Theology (GradDipTh)

The **Graduate Certificate in Theology** and **Graduate Diploma in Theology** are designed for those who already have an undergraduate qualification and brings vocational expertise and life experience into dialogue with critical reflection on the Christian faith. Students studying these programmes will deepen their theological understanding and discover connections between theology and the wider world, the church and missions contexts. Completion of the GradDipTh provides a potential springboard into postgraduate study. Graduates from these programmes have returned to their vocations, engaged in missions or community development work in local and global contexts, trained as teachers or moved into church leadership.

* Not available for International Students

† This programme requires a student to have an approved placement within a church or Christian organisation. Students are primarily responsible for finding their own placement.

More details about the School of Theology can be found on the Laidlaw College website:
www.laidlaw.ac.nz/theology

“

“Studying at Laidlaw, while practising as a Pastor, has helped expand my thinking and theology around Christian Leadership. I appreciate how Laidlaw seeks to help students contextually apply their learning. For me this learning edge has continued through my involvement with Engage: Laidlaw Centre for Church Leadership and through our church benefitting from Laidlaw’s ministry internship programme.”

Mike Yates

Pastor, Shore Grace Church and Director of Ministerial Development, Wesleyan Methodist Church of NZ





Laidlaw Graduate School

Located within the School of Theology, the Laidlaw Graduate School (LGS) seeks to nurture and train emerging scholars through strong postgraduate programmes and the building of a supportive scholarly community in which students and established scholars work closely together, each gaining from the engagement of ideas.

Postgraduate Diploma in Theology (PGDipTh)

The **Postgraduate Diploma in Theology** programme provides an advanced level theological qualification for those who have already completed a recognised Bachelor's level or a Graduate Diploma qualification in Theology. The PGDipTh programme consists of taught courses. Also, students who successfully complete taught courses in the MTh programme amounting to at least 120 credits, but who do not complete a research project, will be awarded the PGDipTh.

Master of Theology (MTh)

The **Master of Theology** is a two-year (full-time equivalent) 180 or 240 credit degree. It provides an advanced level theological qualification for those who have already completed a recognised Bachelor's level degree in theology and want to upgrade their qualifications in a specific area or extend their understanding of Christian ministries. The degree provides opportunity for Master's level biblical and theological study related to the fields of Biblical Studies, Christian Thought and History and Pastoral, Missional and Contextual Studies, and for students to pursue a research project in an area they are interested in.



Advanced Research Degrees and Doctoral Programmes

Under a memorandum of agreement with Auckland University of Technology (AUT), Laidlaw candidates may apply to enrol in the AUT Master of Philosophy or Doctor of Philosophy programmes and to undertake research in theology under the supervision or co-supervision of Laidlaw faculty. Such students are subject in all respects to the regulations of AUT and should familiarise themselves with the AUT Calendar available on the AUT website www.aut.ac.nz. Students interested in this option should consult the Head of School.

For more details about other advanced research degree and doctoral programmes, please email info@laidlaw.ac.nz.

More details about these programmes can be found on the Laidlaw College website:
www.laidlaw.ac.nz/postgraduate-study

“

“Studying Theology at Laidlaw has led me to a deep encounter and experience of God, and has helped prepare me for God's service in church ministry. Laidlaw offers me a very supportive and intellectually stimulating environment. I also love the rich multicultural atmosphere here.”

Yukiko Wakui-Khaw
GradDipTh graduate and MTh Student



School of Social Practice

The School of Social Practice trains people to make a contribution to society through work in practical fields. Students' professional knowledge of their field, social and relational skills and understanding of the gospel are developed through integrated learning experiences which ground them in both research-led practice and relevant theory. The School of Social Practice offers two undergraduate degrees, in Counselling and Primary Teaching, both of which qualify graduates to practice professionally in New Zealand in their chosen field. We also offer specialised diplomas in Relational Studies and Christian Education for those who want to study the foundational aspects of those disciplines in conjunction with theology.

Counselling

Diploma in Relational Studies (DipRS)*

The **Diploma in Relational Studies** is a one-year diploma which is ideal for church workers and volunteers, people involved in community groups, or those considering a career in a caring profession, for example counselling, social work, community work, nursing, and teaching. If you have an interest in the role that theology might have in how we engage in relationship, make sense of some of what psychology can offer, and explore bicultural relational contexts, then this programme is for you.

Completion of this programme provides transition opportunities into the Bachelor of Counselling programme at Laidlaw College.

**subject to NZQA approval.*

Bachelor of Counselling (BCouns)

The **Bachelor of Counselling** is a three year degree designed for students who want to integrate Christian faith with a range of sound, well-established counselling theories and practical skills, in order to enter into community, church-based or private practice. The degree has a common core of biblical, theological and philosophical studies which provides a foundation for a deep appreciation of the Scriptures and the outworking of the Gospel in life and professional practice. Formation is a vital component of the BCouns.

Much of the learning happens in personal counselling and in group process, in which all students participate each semester. It is in these groups that deep and enduring formation takes place.

More details about the Counselling programmes can be found on the Laidlaw College website: www.laidlaw.ac.nz/counselling

Certificate in Study and Career Preparation (CertPrep)*

The **Certificate in Study and Career Preparation** assists students with the development of key skills, capabilities, knowledge and attributes needed to succeed in tertiary education including degree level. The programme provides a foundation for students who want to continue into Laidlaw programmes in Theology, Education or Counselling through a mixture of academic skills development and reflection on Christian faith and life. The programme focuses on the following key areas: Academic readiness, managing your learning, and two areas related to a chosen career pathway in Counselling, Education or Christian Studies.

** Not available for International Students*

Education

Diploma in Christian Education (DipCEd)

The **Diploma in Christian Education** is ideal for children's ministry workers and volunteers, people involved in home schooling or community education programmes, or those considering a career in an educational profession, for example teacher aiding, student support or tutoring.

If you have an interest in how your faith and educational practice might come together to strengthen your work with children in your community, this programme will help you work in a range of social and cultural contexts.

Bachelor of Teaching (BTeach)

The **Bachelor of Teaching (Primary)** is an Education Council approved three year professional degree preparing students for Primary Teaching in New Zealand. Graduates are eligible for registration and can be found in primary, intermediate, state, integrated and private schools throughout New Zealand and around the world.

The degree integrates theory and practice from the start, in dynamic, interactive on-campus learning environments and in over 22 weeks of school-based practice. Students think vocationally about teaching and have opportunities to reflect theologically on their practice throughout the degree.

More details about the Education programmes can be found on the Laidlaw College website:
www.laidlaw.ac.nz/education

Scholarships and Funds

Laidlaw College provides access to a number of scholarships and funds for students studying in New Zealand. All are annual unless otherwise stated. Scholarship award decisions will be made on the basis of a completed application form by the Laidlaw College Senior Leadership Team or nominee. Applications for the following year must be received by the 1st day of December each year.

Completing an application does not guarantee you will receive a scholarship. Decisions regarding the awarding of scholarships are affected by available funds, quality of applications and number of applicants in a given year.

Please see the Laidlaw website for more details: www.laidlaw.ac.nz/scholarships



APPLICATION PROCESS FOR DOMESTIC STUDENTS



Admission Requirements

GENERAL

Certificate in Study and Career Preparation

General Admission Requirements

- **No secondary schooling or NCEA level 1 attainment or equivalent:** Entry assessment required
- **NCEA level 2 attainment, or equivalent:** Open entry

NCEA Equivalence can include:

NZ School Certificate

Sixth Form Certificate

Overseas equivalent qualifications, including IB and CIE, or HSC (Australia).

Other NZQA level 1 or 2 certificates in relevant disciplines to Laidlaw programmes.

Evidence of level of academic achievement or a portfolio of work for homeschooled students*

Reference/support/documentation from employer*

NB. All equivalences must be documented.

*The applicant may need to sit assessment for entry.

Entry Assessment

- Includes a literacy test.
- Dates for assessment will be advised.

THEOLOGY

Certificate in Christian Ministry

General Admission Requirements

- **No secondary schooling or NCEA level 1 attainment or equivalent:** Entry assessment required
- **NCEA level 2 attainment, or equivalent:** Open entry

NCEA Equivalence can include:

NZ School Certificate

Sixth Form Certificate

Overseas equivalent qualifications, including IB and CIE, or HSC (Australia).

Other NZQA level 1 or 2 certificates in relevant disciplines to Laidlaw programmes.

Evidence of level of academic achievement or a portfolio of work for homeschooled students*

Reference/support/documentation from employer*

NB. All equivalences must be documented.

*The applicant may need to sit assessment for entry.

Entry Assessment

- Includes a literacy test.
- Dates for assessment will be advised.

Police Clearance

It is a condition of enrolment in the CertCM (Internship) that students complete a Police Vetting Service Request and Consent form as part of their application. This police clearance should be less than 6 months old if presented at the time of application.

Please see the Laidlaw College website for full admissions requirements:

www.laidlaw.ac.nz/admission-requirements

Diploma in Christian Studies | Bachelor of Theology | Bachelor of Ministries

General Admission Requirements

NCEA Level 3

- Three subjects at Level 3, made up of 14 credits each, in **three approved subjects**
- Literacy: **10 credits at Level 2 or above**, made up of:
 - 5 credits in reading
 - 5 credits in writing
- Numeracy: **10 credits at Level 1 or above**, made up of:
 - Achievement standards – specified achievement standards available through a range of subjects, or
 - Unit standards – package of three numeracy unit standards (26623, 26626, 26627 – **all three required**)

NCEA Equivalence can include:

University Entrance, A or B Bursary.

Overseas equivalent qualifications, including IB and CIE, or HSC (Australia).

Other NZQA Level 3 certificates in similar disciplines to Laidlaw programmes.

Other NZQA level 4 certificates in a different discipline.

Evidence of level of academic achievement or a portfolio of work for homeschooled students*

Reference/support/documentation from employer*

NB. All equivalences must be documented.

*The applicant may need to sit assessment for entry.

Entry Assessment

For applicants who do not meet the above requirements, an Entry Assessment may be required.

- Includes a literacy test.
- Dates for assessment will be advised.

Special Admission

Possible study options can arise depending on the assessment result:

- An offer of entry to the Certificate in Study and Career Preparation
- An offer of entry to the Certificate in Christian Ministry programme
- Entry to the Diploma in Christian Studies programme if applied for
- An offer of entry to the Diploma in Christian Studies if the BMin or BTheol was applied for
- Entry to the BMin or BTheol (if appropriate).

Police Clearance

It is a condition of enrolment in the DipCS (Christian Leadership Track) and BMin that students complete a Police Vetting Service Request and Consent form as part of their application, or for those including an Internship course in another programme, before course enrolment can be approved. This police clearance should be less than 6 months old if presented at the time of application.

Please see the Laidlaw College website for full admissions requirements including transitioning from the DipCS to the BTheol and BMin:
www.laidlaw.ac.nz/admission-requirements

Graduate Certificate in Theology | Graduate Diploma in Theology

General Admission Requirements

The normal requirement for admission into the GradCertTh and GradDipTh programmes is a completed undergraduate degree, or higher qualification, as defined in the National Qualifications Framework of the NZQA.

Special Admission

Serious consideration will be given to those who have a combination of relevant experience and non-degree qualifications. This is particularly relevant for those whose qualifications are at a level that, in the current New Zealand environment, is likely to be regarded as having been gained at degree level. Each application will, however, be considered in light of the applicant's overall background and ability to benefit from the programme. The onus is on the applicant to provide details of all qualifications and experience relevant to the application procedure.

Please see the Laidlaw College website for full admissions requirements:
www.laidlaw.ac.nz/admission-requirements

Postgraduate Diploma in Theology | Master of Theology

General Admission Requirements

The normal requirement for admission into the PGDipTh and MTh programmes is a completed undergraduate degree, or higher qualification, as defined in the National Qualifications Framework of the NZQA, in an appropriate discipline. The following options are available:

- Completed Bachelor's qualification in theology or Christian ministry OR
- Applicants who hold a recognised Bachelor's level degree in a discipline other than theology may be accepted for study towards the PGDipTh or MTh following successful completion of a bridging programme of theological study, such as those provided by Laidlaw or as approved by the Postgraduate Committee. Bridging requirements may be satisfied wholly or partly by credit transfer and/or recognition of prior learning.

A grade average of 7.0 (B) or higher in papers of the qualifying undergraduate programme equivalent to NZQA levels 6 and 7 is required.

Special Admission

Serious consideration will be given to those that hold qualifications of an equivalent standard. In exceptional circumstances the Postgraduate Committee may allow applicants who do not meet these requirements, or who do not have qualifications of an equivalent standard, to be granted provisional candidature into the PGDipTh. Candidature in the MTh shall be confirmed after the satisfactory completion of the PGDipTh.

Each application will, however, be considered in light of the applicant's overall background and ability to benefit from the programme. The onus is on the applicant to provide details of all qualifications and experience relevant to the application procedure.

Please see the Laidlaw College website for full admissions requirements:
www.laidlaw.ac.nz/admission-requirements

Diploma in Relational Studies | Bachelor of Counselling

General Admission Requirements

NCEA Level 3

- Three subjects at Level 3, made up of 14 credits each, in **three approved subjects**
- Literacy: 10 credits at Level 2 or above, made up of:
 - 5 credits in reading
 - 5 credits in writing
- Numeracy – 10 credits at Level 1 or above, made up of:
 - Achievement standards – specified achievement standards available through a range of subjects, or
 - Unit standards – package of three numeracy unit standards (26623, 26626, 26627 – **all three required**).

NCEA Equivalence can include:

University Entrance, A or B Bursary.

Overseas equivalent qualifications, including IB and CIE, or HSC (Australia).

Other NZQA Level 3 certificates in similar disciplines to Laidlaw programmes.

Other NZQA level 4 certificates in a different discipline.

Evidence of level of academic achievement or a portfolio of work for homeschooled students*

Reference/support/documentation from employer*

NB. All equivalences must be documented.

*The applicant may need to sit assessment for entry.

Minimum Age

DipRS and BCouns applicants

All DipRS and BCouns applicants must be at least 20 years of age on or before the first day of semester in which the proposed programme of study is offered.

Entry Assessment

For applicants who do not meet the above requirements, an Entry Assessment may be required.

- Includes a literacy test.
- Dates for assessment will be advised.

Special Admission

Possible study options can arise depending on the assessment result:

DipRS applicants

- An offer of entry to a level 4 programme
- Entry to Diploma in Relational Studies

BCouns applicants

- An offer of entry to a level 4 programme
- An offer of entry to the Diploma in Relational Studies
- Entry to Bachelor of Counselling (if appropriate).

Professional References

Applicants are required to submit written references from two referees. Referees should not be a close friend or relation and should be able to answer questions about the applicant in a ministry and/or professional capacity.

Selection Interview

All applicants who have successfully completed the first stage of the application process will provisionally be accepted into the programme and invited to attend a group interview and, if required, a further interview by a panel of two selectors.

Police Clearance

It is a condition of enrolment that students complete a Police Vetting Service Request and Consent form as part of their application. This police clearance should be less than 6 months old if presented at the time of application.

Please see the Laidlaw College website for full admissions requirements including requirements for transitioning into the second year of the BCouns: www.laidlaw.ac.nz/admission-requirements

Diploma in Christian Education | Bachelor of Teaching (Primary)

General Admission Requirements

DipCEd applicants

Entry to the Diploma in Christian Education is usually University Entrance.

NCEA Level 3

- Three subjects at Level 3, made up of 14 credits each, in **three approved subjects**
- Literacy: 10 credits at Level 2 or above, made up of:
 - 5 credits in reading
 - 5 credits in writing
- Numeracy – 10 credits at Level 1 or above, made up of:
 - Achievement standards – specified achievement standards available through a range of subjects, or
 - Unit standards – package of three numeracy unit standards (26623, 26626, 26627 – **all three required**).

NCEA Equivalence can include:

University Entrance, A or B Bursary.

Overseas equivalent qualifications, including IB and CIE, or HSC (Australia).

Other NZQA Level 3 certificates in similar disciplines to Laidlaw programmes.

Other NZQA level 4 certificates in a different discipline.

Evidence of level of academic achievement or a portfolio of work for homeschooled students*

Reference/support/documentation from employer*

NB. All equivalences must be documented.

*The applicant may need to sit assessment for entry.

Students 20 years or older, or those applying for the Diploma in Christian Education, must meet comparable literacy and numeracy requirements as those entering with UE. This will usually be assessed by the entrance test.

BTeach applicants

Entry to the Bachelor of Teaching (Primary) is New Zealand University Entrance.

NCEA Equivalence:

Equivalence for students under the age of 20 applying to the BTeach is sought through an application for exceptional academic entry from the Education Council of Aotearoa New Zealand.

Minimum Age

BTeach applicants

All BTeach applicants must be at least 18 years old at the time of entry.

Entrance Test Requirements

All applicants are required to have a selection interview and sit an entrance exam that focuses on literacy and numeracy skills.

BTeach applicants

Candidates must score step 4 in literacy (reading and writing) and step 5 in numeracy for full entry into the course. Lower grades may receive provisional entry but any candidate allowed into the programme with an English language competency literacy assessment score lower than 4 and a numeracy assessment score lower than 5 must re-sit the test at the end of their first year to be certain that they meet the Laidlaw College entry levels (English language competency literacy assessment score of at least 4 and a numeracy assessment score of at least 5) prior to enrolling in year two of the degree.

Special Admission

Possible study options can arise depending on the Entrance Test result:

DipCEd applicants

- An offer of entry to a level 4 programme
- An offer of entry into an alternative level 5 programme

BTeach applicants

- An offer of entry to the Diploma in Christian Education
- An offer of entry to the Bachelor of Teaching (Primary).

Professional References

Applicants are required to submit written references from two referees. Referees should not be a close friend or relation and should be able to answer questions about the applicant in a ministry and/or professional capacity.

Selection Interview

All applicants who have successfully completed the first stage of the application process will be invited to attend an interview with a panel of selectors.

Police Clearance

All applicants must complete a Police Vetting Service Request and Consent form as part of their application. All international applicants for the DipCEd and BTeach must provide a police clearance certificate from their country of citizenship **AND** for any country in which they have lived for more than a 12 month period in the last 10 years. This police clearance should be less than 6 months old and be presented at the time of application. This is to meet the requirements of the Vulnerable Children Act 2014.

Charged with an offence

Any Laidlaw College student teacher charged with an offence must disclose the charge in writing to the Head of Programme within 3 working days.

Please see the Laidlaw College website for full admissions and English Language Test requirements: www.laidlaw.ac.nz/admission-requirements

ENGLISH LANGUAGE REQUIREMENTS

Applicants must meet both the Academic and English language requirements for the programmes. In addition to the requirements outlined **applicants for whom English is not their first language** must use one of the following methods to demonstrate that they have the required level of English proficiency to study in New Zealand:

- gained NCEA level 3 and met New Zealand University Entrance requirements; or
- holds a Bachelor's degree of at least three years from New Zealand, Australia, Canada, the Republic of Ireland, South Africa, the United Kingdom or the United States of America; or
- achieved a Certificate in English Language Teaching to Adults (CELTA); or
- achieved the required score, as indicated in the following subsections, in one of the following internationally recognised English proficiency tests, within the preceding two years:
 - International English Language Testing System (IELTS)
 - University of Cambridge Certificate in Advanced English (CAE)
 - University of Cambridge Certificate of Proficiency in English (CPE)
 - University of Cambridge First Certificate in English (FCE)
 - International English for Speakers of Other Languages qualifications by City and Guilds (IESOL)

- Pearson Test of English (Academic) (PTE)
- New Zealand Certificate in English Language (NZCEL)
- Testing of English as a Foreign Language (TOEFL)

A waiver for the English language test may be granted:

- if the applicant can provide clear evidence of completion of a tertiary qualification of at least three years' duration with English as the language of instruction in New Zealand, Australia, Canada, the Republic of Ireland, South Africa, the United Kingdom or the United States.
- for those who have studied in NZ for a minimum of two years at secondary school and gained either
 - eight NCEA level 2 University Entrance literacy credits (4 credits in reading and 4 credits in writing) gained prior to 2014 **or**
 - ten NCEA level 2 NCEA University Entrance Literacy credits (5 credits in reading and 5 credits in writing).
- for long-term residents (10+ years) in New Zealand, or another English speaking country, who are able to demonstrate English language competency appropriate to the desired level of study. Competency must be documented.

Please note that these waiver requirements do not apply to the Bachelor of Teaching. Applicants should refer to the Laidlaw College website for details:
www.laidlaw.ac.nz/admission-requirements

QUALIFICATION	ENGLISH LANGUAGE REQUIREMENTS (ACADEMIC)	
	IELTS	PEARSON TEST OF ENGLISH
Certificate in Study and Career Preparation	5.5 or higher with minimum 5.0 in reading and writing	42
Certificate in Christian Ministry	5.5 or higher with minimum 5.0 in reading and writing	42
Diploma in Christian Studies	6.0 or higher with minimum 6.0 in all bands	50
Diploma in Relational Studies	6.0 or higher with minimum 6.0 in all bands	50
Diploma in Christian Education	6.0 or higher with minimum 6.0 in all bands	50
Bachelor of Theology	6.0 or higher with minimum 6.0 in all bands	50
Bachelor of Ministries	6.0 or higher with minimum 6.0 in all bands	50
Bachelor of Counselling	6.5 or higher with minimum 6.0 in all bands	58
Bachelor of Teaching (Primary)	7.0 or higher with minimum 7.0 in all bands (conditions apply)	N/A
Graduate Certificate in Theology Graduate Diploma in Theology	6.5 or higher with minimum 6.0 in all bands	58
Postgraduate Diploma in Theology Master of Theology	7.0 or higher with minimum 7.0 in writing (conditions apply)	65

For other equivalent English Language Proficiency scores please refer to www.nzqa.govt.nz/about-us/our-role/legislation/nzqa-rules/nzqa-related-rules/the-table/

International Students



How to Apply and Enrol

If you've decided on a programme of study and you're ready to apply, you can apply online at www.laidlaw.ac.nz/apply.

The Application Process

The application process may take some time so it is essential that you make an early start.

When embarking on study abroad there are a number of factors that will support your application to Laidlaw and your time here in New Zealand if successful:

- We like to know that you come with the full backing and support of your church, both in prayer and finances. It is a privilege for us to have a part in training people from around the globe, but it makes a significant difference to have this training recommended and supported by your church.
- It is also important that you have sufficient funds to cover all costs involved for the duration of your study. These include your airfare, tuition fees and accommodation costs for each year of your proposed programme. Obtaining part-time or holiday work is not guaranteed, so it pays to look at sourcing finances within your own country before arriving. In the process of obtaining a visa your financial position will be looked into.

Once you've found the programme you'd like to apply for, take your time to answer all questions carefully and feel free to forward any queries to our Admissions Team (info@laidlaw.ac.nz).

When we have received your application and supporting documents, your application will be considered by the Admissions Committee and you will be notified of the result by email. If successful you will be given full detail of fees payable, a medical insurance quote, an Offer of Place and programme details.

The Offer of Place and receipt of fees paid will form part of your visa application. You can apply online for a Student Visa/Permit on the INZ website: www.immigration.govt.nz.

Please note: Laidlaw College does not admit any international student under the age of 18.

ENGLISH LANGUAGE PROFICIENCY

As all tuition is given in English, proficiency in understanding, reading, writing and speaking English is necessary. Applicants whose first language is not English are required to have an English Language Proficiency test score (academic version) appropriate to their programme of study (see table on page 31).

A waiver of English Language requirements may be granted by the Admissions Committee if:

- The applicant can provide clear evidence of completion of a tertiary qualification of at least three years' duration with English as the language of instruction in New Zealand, Australia, Canada, the Republic of Ireland, South Africa, the United Kingdom or the United States, **OR**
- The applicant is from countries with a student visa approval rate of at least 80 percent and can provide clear evidence of study at schools using English as the language of instruction and has either:
 - (a) completed all primary education and at least three years of secondary education (that is, the equivalent of New Zealand forms 3 to 7 or years 9 to 13), or
 - (b) completed at least five years of secondary education (that is, the equivalent of New Zealand forms 3 to 7 or years 9 to 13).

FEES

For information about fees, please see the full Fees Schedule online at www.laidlaw.ac.nz/fees

CONTACT US

If you still have questions and would like to talk to someone, please contact us by calling +64 9 836 7800 or email info@laidlaw.ac.nz. If you are in New Zealand please visit us at one of our campuses in Auckland or Christchurch.

To find out more about enrolling as an international student check out our website:
www.laidlaw.ac.nz/internationals

APPLICATION PROCESS FOR INTERNATIONAL STUDENTS



Graduate Profile

Laidlaw's mission is to equip students and scholars to renew their communities with a faith as intelligent as it is courageous, in service to our vision of a world shaped by love compelled and informed by the gospel. We strive towards this as imperfect people in need of grace, but convinced that through faith and hope our graduates can influence the church and world through love. The graduate profile comprises the distinctive characteristics by which we intend our graduates to become known, in the context of their churches, communities, workplaces and relationships.

Formation

Laidlaw graduates will be known as:

People of faith, their lives shaped by encounter with Jesus, in scripture, prayer, worship and community. People of grace, embracing the tensions of life and faith with a deep sense of their own brokenness and redemption. People of love, who encounter others with authenticity and humility, whether sharing laughter or tears. People of hope, who invite others into the struggle for beauty and justice, freedom and rest, as they anticipate the new creation.

Context

Laidlaw graduates will participate in:

The local church, building community by serving, challenging and renewing in love. Mission, shaping society by living out the gospel of hope and reconciliation. Bicultural dialogue, partnering with tangata whenua and manuhiri of Aotearoa New Zealand in a spirit of covenantal love and shared story. Diverse communities, celebrating culture and difference in respectful and authentic dialogue. Vocational settings, pursuing excellence and embodying faith, hope and love in the context of work, home and play.

Knowledge and Understanding

Laidlaw graduates will be renewed by:

A deeper knowledge of the triune God who is revealed in Jesus and in the witness of the scriptures and who engages with the world. A christocentric theological method anchored in the scriptures, engaged with the church and relevant to life. A relational understanding of humanity, of self in relation to others, in the context of a world created for relationship with God. A participatory expression of faith, hope and love as primary ways of engaging with people, life and thought. A robust grasp of the theories and practices and the historic and contemporary voices of their chosen discipline, in dialogue with theology.

Skills

Laidlaw graduates will be equipped to:

Engage with issues of life from a deep participation in the gospel as a primary source of knowledge. Read the biblical text in light of the discourse around its interpretation and discern its relevance for contemporary church and society. Apply their knowledge in skillful, practical ways appropriate to their discipline and in the context of lifelong learning. Articulate their faith in dialogue with others with confidence and intelligence, curiosity and respect.





Interested?

We would love to hear from you, to talk about whether study at Laidlaw College can equip you to follow your calling.

Want to find out more?

Plan a Visit

There's no better way to find out what Laidlaw College is like, than to see it for yourself! Come and be a "Student for a Day" on any of our campuses and experience firsthand what our classes, staff and great community are like. We'd love to meet you!

To become a "Student for a Day" contact us by calling 0800 999 777 or email info@laidlaw.ac.nz.

Check out our website www.laidlaw.ac.nz

The Laidlaw website was designed especially for potential students. You will find some great audio-visual content and all the information you need about our programmes, staff, campuses and facilities. You can also visit our Facebook page to find out what's happening at Laidlaw College on a day-to-day basis.

Attend Events on Campus

We frequently host events that are open to the public, so if you live in Auckland or Christchurch, this is a great way to begin participating in College life. For those who can't be with us in person, we often film events or interviews with visiting scholars. Keep an eye on the website and our Facebook page to find out about upcoming events and recently uploaded videos.

Ready to Apply?

If you've decided on a programme of study and you're ready to apply, you can apply online by visiting www.laidlaw.ac.nz/apply

For information about fees, please see the full Fees Schedule online at www.laidlaw.ac.nz/fees

If you still have questions and would like to talk to someone, please contact us by calling 0800 999 777 or email info@laidlaw.ac.nz.

Course and programme information is subject to change.

Please refer to www.laidlaw.ac.nz for latest information or contact us.



ΛΟΓΟΝ ΖΩΗΣ ΕΠΕΧΟΝΤΕΣ
SINCE 1922

LAIDLAW COLLEGE

TE WANANGA AMORANGI

ENQUIRE TODAY!

www.laidlaw.ac.nz

info@laidlaw.ac.nz

0800 999 777