



**LIDLAW
THEOLOGY**

POSTGRADUATE HANDBOOK 2024



OUR VISION TE WAWATA

A world shaped by love,
compelled and informed by
the Gospel.

OUR MISSION TE WHAKATAKANGA

To equip students and scholars
to renew their communities
with a faith as intelligent as it is
courageous.



Laidlaw College is an evangelical, interdenominational tertiary institution committed to the provision of theological education throughout the whole of New Zealand. Laidlaw College has campuses in Henderson and Christchurch – as well as distance learning options, that together offer students a great deal of flexibility in how they structure their study.

Laidlaw College is registered by the New Zealand Qualifications Authority (NZQA) under provisions of the Education and Training Act 2020 and its amendments and is accredited to teach programmes listed in this handbook, all of which have been approved by the Authority.

HAERE MAI WELCOME

Laidlaw is committed to scholarly discovery, holding all truth to be embedded in the creative love of a communicating God. Sound research enables discovery of the nature of God as revealed in his creative and redemptive acts of self-communication.

This is a task performed together. Fruitful enquiry emerges from communities. Out of shared assumptions and commitments new questions may be asked, debated and contested. Scholarship thus involves engaged enquiry, built out of commitment, as well as appropriate distance.

Located within the School of Theology, the Laidlaw Graduate School (LGS) seeks to nurture and train emerging scholars through strong postgraduate programmes and the building of a strong scholarly community in which students and established scholars work closely together, each gaining from the engagement of ideas.

We invite you to join this community.

IN THIS HANDBOOK YOU WILL FIND INFORMATION ABOUT:

- Postgraduate Admission Requirements
- Postgraduate Programmes
- General Regulations concerning Postgraduate study
- Level 8 Postgraduate Courses
- Level 9 Master of Theology Research
- Postgraduate Scholarships

CONTACT DETAILS

Laidlaw Graduate School
School of Theology, Laidlaw College
T 09 836 7800
E laidlawgraduateschool@laidlaw.ac.nz
W www.laidlaw.ac.nz
Henderson Campus
3 Smythe Road, Henderson
Auckland 0610

NOTE: All reasonable efforts have been made to ensure that the information in this Student Guide is accurate and current. However, Laidlaw College is not liable, and makes no guarantee that this information will not be changed or updated. Accordingly, changes and updates may be made without prior notice. This guide can be downloaded from the Laidlaw website (www.laidlaw.ac.nz/postgraduate-study), and the online version will always contain the latest information.

TABLE OF CONTENTS

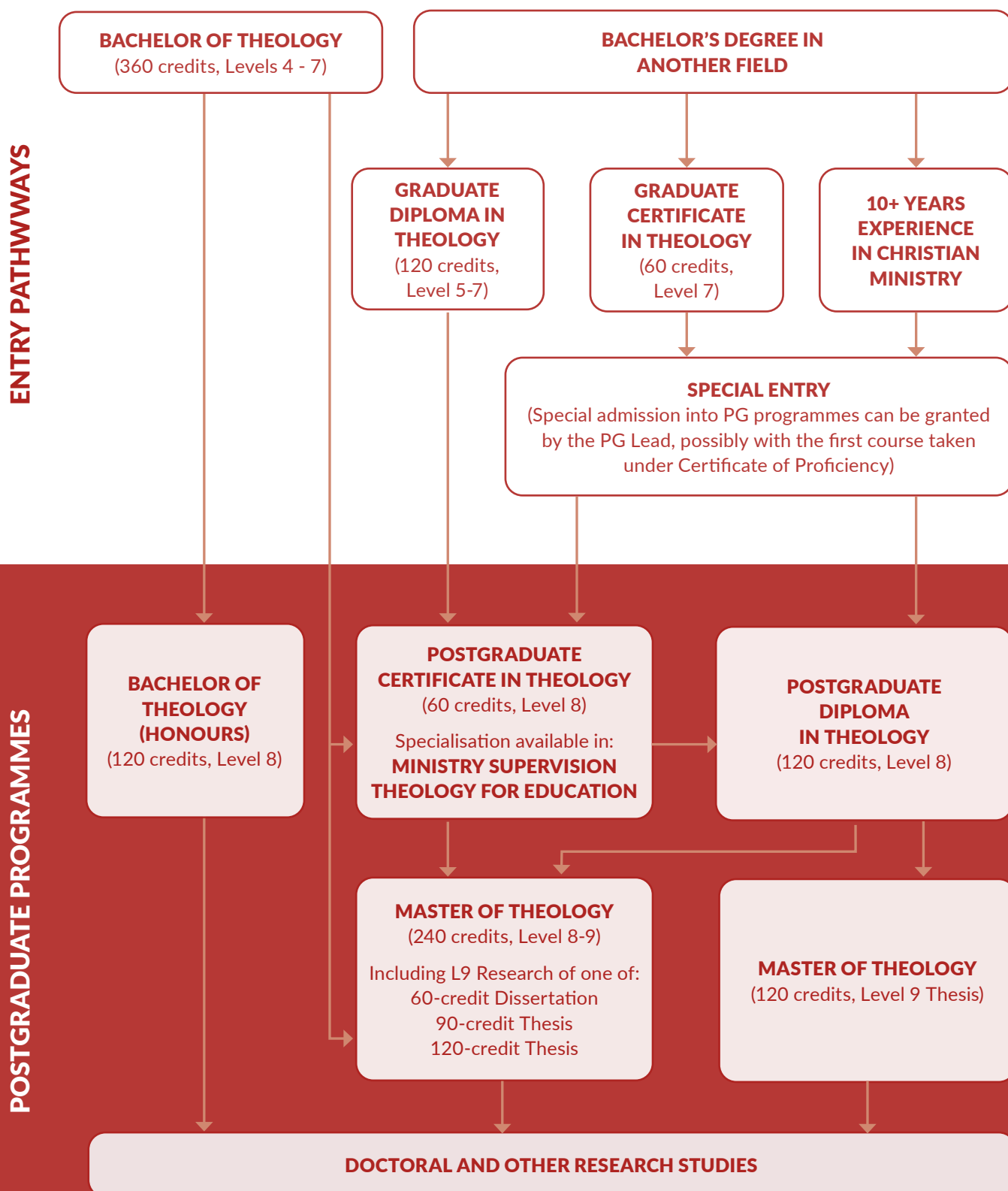
Postgraduate Entry and Study Pathways	05
Postgraduate Admission Requirements	06
Programmes	08
<i>Postgraduate Certificate in Theology</i>	8
<i>Postgraduate Certificate in Theology (Ministry Supervision)</i>	9
<i>Postgraduate Certificate in Theology (Theology for Education)</i>	10
<i>Postgraduate Diploma in Theology</i>	11
<i>Bachelor of Theology (Honours)</i>	12
<i>Master of Theology</i>	14
<i>Advanced Research Degrees</i>	16
General Information & Regulations	17
Postgraduate Study Support	19
Level 8 Courses 2024	21
Level 9 Research	23
Scholarships	30
All Postgraduate Courses	34

GRADUATE PROFILE

Laidlaw College aims to educate and prepare graduates who will transform communities. Postgraduate studies can play a particular role in this. It is at this level that students learn how to find their own voice and to produce engaging and persuasive cases for their insights. The opportunity to focus, conduct research and produce a substantive piece of writing enables a reach and impact quite different from that of undergraduate study. We aspire for our graduates to be effective 'culture agents' for the Gospel. Laidlaw's Masters

graduates fulfill this in a variety of ways. Some enter or return to church and mission leadership roles, others go on to doctoral study as preparation for a teaching career. Still others apply their deep faith development and advanced integrative skills to roles in business, community service, education, the arts, sports administration – in fact all vocations can gain from those who can think through issues carefully and articulate them in a profound manner.

POSTGRADUATE ENTRY AND STUDY PATHWAYS



Postgraduate Admissions Requirements

Normal Admission

The normal requirement for admission into Postgraduate study at Laidlaw is:

- A completed three-year undergraduate degree in Theology or Ministry or equivalent qualification, as defined in the National Qualifications Framework of the NZQA, in an appropriate discipline.
- A bachelor's degree in another field plus a Graduate Diploma in Theology.

Entry in conditional upon:

- A grade point average of 7.0 (B) in courses of the qualifying undergraduate programme at NZQF levels 6 and 7; and
- Approval of the Postgraduate Lead.

Special Admission

Serious consideration will be given to those that hold qualifications of an equivalent standard. In exceptional circumstances the Postgraduate Committee may allow applicants who do not meet these requirements, or who do not have qualifications of an equivalent standard. Approval will be based on:

Completion of a recognised undergraduate degree in a discipline other than Theology or Ministry and:

- Completion of a Graduate Certificate in Theology with a grade point average of 7.0 (B), or
- The completion of an equivalent programme of study from another institution to bridge into theological study that is approved by the Postgraduate Committee with a grade point average of 7.0 (B) in courses of the qualifying programme at NZQF levels 6 and 7; or
- 10+ years of Christian Ministry Experience.

Approved entry by the Postgraduate Committee in consideration of relevant documented academic ability and background.

Each application will, however, be considered in light of the applicant's overall background and ability to benefit from the programme. The onus is on the student to provide details of all qualifications and experience relevant to the application procedure.

When granted Special Admission, students may be asked to complete one or two courses under Certificate of Proficiency the credits of which can be transferred to the eventual programme of study.

Entry Requirements for Master of Theology

Entry into Level 9 Research (Thesis/Dissertation) requires a minimum GPA of 7.0 (B) in level 8 courses. The normal pathway to MTh is through a PGDipTh, students with the required GPA in their PGDipTh can progress to MTh.

Students with a GPA of 7.0 (B) or higher in their BTh may enter directly into the 240-credit MTh programme. However, if after four level 8 courses their GPA is below the 7.0 (B) threshold, students may apply to have these credits transferred from an MTh to a PGDipTh qualification.

English Language Requirements

Applicants must meet both the Academic and English language requirements for postgraduate study.

In addition to the requirements outlined above, applicants for whom English is not their first language must use one of the following methods to demonstrate that they have the required level of English proficiency to study in New Zealand:

- Gained NCEA level 3 and met New Zealand University Entrance requirements; OR
- Holds a Bachelor's degree of at least three years from New Zealand, Australia, Canada, the Republic of Ireland, South Africa, the United Kingdom or the United States of America; OR
- Achieved a Certificate in English Language Teaching to Adults (CELTA); OR
- Achieved the required score, as indicated in the following subsections, in one of the following internationally recognised English proficiency tests, within the preceding two years:
 - International English Language Testing System (IELTS)
 - University of Cambridge Certificate in Advanced English (CAE)
 - University of Cambridge Certificate of Proficiency in English (CPE)
 - University of Cambridge First Certificate in English (FCE)
 - International English for Speakers of Other Languages qualifications by City and Guilds (IESOL)
 - Pearson Test of English (Academic) (PToE)
 - New Zealand Certificate in English Language (NZCEL)
 - Testing of English as a Foreign Language (TOEFL)

The requirement for postgraduate study is:

- IELTS 7.0 with minimum of 7.0 in writing OR
- Pearson's Test of English (Academic) score of 65 or higher OR
- Equivalent see: <http://www.nzqa.govt.nz/about-us/our-role/legislation/nzqa-rules/nzqf-related-rules/the-table/>

A waiver for the English language test may be granted:

- For those applicants who have an undergraduate or higher qualification gained from; New Zealand, Australia, Canada, the Republic of Ireland, South Africa, the United Kingdom or the United States of America.
- For those who have studied in New Zealand for a minimum of two years at secondary school and gained either
 - a) eight, level 2 NCEA University Entrance literacy credits (4 credits in reading and 4 credits in writing) gained prior to 2014 or
 - b) ten, level 2 NCEA University Entrance Literacy credits (5 credits in reading and 5 credits in writing).
- For long-term residents (10+ years) in New Zealand, or another English speaking country, who are able to demonstrate English language competency appropriate to the desired level of study. Competency must be documented.

International applicants to Postgraduate programmes should seek NZQA evaluation of their non-New Zealand (overseas) qualifications prior to applying.



There's a need for us to do this research.

THERE'S A NEED FOR US TO KEEP ON APPLYING THEOLOGY AND SCRIPTURE TO WHAT'S GOING ON IN SOCIETY

because of the way that our culture is moving and changing. I'm inspired to keep on being diligent with that and the contribution that I have to make."

Kristy Botha | Laidlaw Postgraduate Graduate

POSTGRADUATE CERTIFICATE IN THEOLOGY (PGCertTh)

Programme Summary

NQF Level	8 – 60 credits
Duration	Full-time for one semester, part-time options available
Starts	February and July
Places	Open – Selection criteria apply
Campus	Henderson and Distance Learning
Tuition	\$3,906 plus Student Services Fee
Web	www.laidlaw.ac.nz/ postgraduate-study

Career Opportunities

Church Leadership

Paid employment in areas such as:

- Pastoral Vocations
- Christian writing
- Church based ministries
- Cross-cultural ministries
- Intercultural ministries
- Para-church work

Professional development

Effective service as a church member

Personal Christian growth

Workplace Christians

Further study at master's and doctoral level

Outline

The Postgraduate Certificate in Theology (PGCertTh) programme provides an advanced level theological qualification. It is made up of two Level 8 courses of 30-credits each (see course list on page 21).

Live engagement in the lectures is a necessary part of postgraduate study at Laidlaw. Postgraduate taught courses involve block-mode lectures, allowing for those outside of the Auckland region to take part. If there are extenuating circumstances that prevent a student from being able to attend in-person, they can seek approval from the Postgraduate Lead to attend the lectures via zoom.

Apart from R531, Postgraduate taught courses do not have a Distance Learning option.

Part-time Options

Continuous enrolment is not necessary when studying part-time, however, the PGCertTh must be completed in a maximum of 2 years. To take a study break that will extend the duration of the programme beyond this maximum a 'Deferral of Study' must be applied for (see page 18).

Study Progression

Students with a GPA of 7.0 (B) or higher in their PGCertTh courses may apply to transfer these credits into a PGDipTh or the 240-credit MTh programme.

Specialist PGCertTh Options

Laidlaw is excited to offer two specialist PGCertTh programmes:

- PGCertTh (Ministry Supervision)
- PGCertTh (Theology for Education)
(running next in 2025)

Postgraduate Certificate in Theology (Ministry Supervision) (PGCertTh (MinSup))

This programme offers in-depth training in Ministry Supervision. Successful completion of the PGCertTh(MinSup) will assist graduates in meeting the supervisory needs of people in a range of ministries, as well as professionals in other helping vocations.

Courses

The Postgraduate Certificate in Theology (Ministry Supervision) is a part-time programme comprised of two successive courses, each 30-credits at level 8. The two papers need to be completed in order, although not necessarily in the same year.

The papers are taught via lecture blocks at Laidlaw's Henderson campus, with course readings and assessments across the semester. In-person engagement in the lectures is essential for the Ministry Supervision courses.

R512.830 FOUNDATIONS OF MINISTRY SUPERVISION

Dr David Crawley, Dr Karen Kemp
13-15 March 2024, 9am - 4:30pm,
8-10 May 2024, 9am - 4:30pm (Huia)

This is the first of two courses which together comprise a Postgraduate Certificate in Theology, designed to equip graduates to offer professional supervision in a range of ministry contexts (understanding ministry in the broad sense of Christian vocation). It examines the nature and purpose of professional supervision, including its importance in people-related ministries. Several theoretical approaches to supervision will be evaluated and participants will reflect critically on theological, ethical, and cultural dimensions of offering supervision in their own contexts. A minimum of two years of ministry or professional experience is normally required for entry.

R513.830 DEVELOPING A MINISTRY SUPERVISION PRACTICE

Dr David Crawley, Dr Karen Kemp
31 July - 2 August 2024, 9am - 4:30pm
11-13 September 2024, 9am - 4:30pm (Huia)

This is the second of two courses which comprise a Postgraduate Certificate in Theology, designed to equip graduates to offer professional supervision in a range of ministry contexts (understanding ministry in the broad sense of Christian vocation). Through the integration of theory, practice, and theology, it enables practitioners to develop a framework for supervision appropriate to their own cultural and professional contexts, and to engage in critically reflective practice.

Additional Entry Requirements

Additional to the Postgraduate entry requirements, candidates must:

- Have a minimum of two years' experience in ministry or a people-helping profession of some kind.
- Candidates are expected to have the opportunity to engage in regular supervision practice during the second semester.
- Applicants must complete a police check.

Postgraduate Certificate in Theology (Theology for Education) (PGCertTh (TE))

Next running in 2025

The vocation of teaching is complex in our current cultural moment. Christian teachers have to be aware of current best practice in the classroom and the conversations shaping the way we understand faith and spirituality. In this programme, we will explore current theological discourse and how that is forming us in our particular context in Aotearoa. Students will be equipped to understand the currents of thought around them and the ways in which the gospel of Jesus speaks into and confronts these.

Courses

The Postgraduate Certificate in Theology (Theology for Education) is a part-time programme comprised of two successive courses, each 30-credits at level 8. The two papers need to be completed in order, although not necessarily in the same year.

R802.830 THEOLOGICAL FOUNDATION FOR EDUCATION IN AOTEAROA

In this course students will engage in biblical theology and make links to the cultural landscapes in the educational context of Aotearoa. The course will provide an opportunity to engage in discussion around Christian theology and how it relates to the vocation of teaching, Christian education and this current cultural moment. The cultural influences and formation of Christian teachers and their spirituality will also be a focus of the course.

R802.830 THEOLOGICAL RESPONSES TO ISSUES IN EDUCATION IN AOTEAROA

In this course students will engage with a selection of current issues and challenges experienced in educational contexts in Aotearoa. This course builds upon the Theological Foundations for Education in Aotearoa course, and pays close attention to the ways culture, context, and theology influences teaching in Aotearoa today.

Special Entry

Special admission for the Theology for Education strand is possible for students with a Bachelor's degree in education, or a Bachelor's degree in another field with a minimum of 2 years' experience in the field of education.

POSTGRADUATE DIPLOMA IN THEOLOGY (PGDipTh)

Programme Summary

NQF Level	8 – 120 credits
Duration	Full-time for 2 semesters, part-time options available
Places	Open – Selection criteria apply
Campus	Henderson and Distance Learning
Tuition Fee	\$7,812 plus Student Services Fee
Web	www.laidlaw.ac.nz/postgraduate-study

Career Opportunities

Church Leadership

Paid employment in areas such as:

- Pastor
- Christian writing
- Church based ministries
- Cross-cultural ministries
- Inter-cultural ministries
- Para-church work
- Pastoral ministry

Professional development

Effective service as a church member

Personal Christian growth

Workplace Christians

Further study at Master's and doctoral level

Outline

The Postgraduate Diploma in Theology (PGDipTh) programme provides an advanced level theological qualification.

It is made up of four Level 8 courses of 30-credits each (see course list on page 21)

Live engagement in the lectures is a necessary part of postgraduate study at Laidlaw. Postgraduate taught courses involve block-mode lectures, allowing for those outside of the Auckland region to take part. If a student's situation prevents them from being able to attend in-person, they can seek approval from the Postgraduate Lead to attend the lectures via zoom.

Apart from R351, Postgraduate taught courses do not have a Distance Learning option.

Part-Time Options

Continuous enrolment is not necessary when studying part-time, however, the PGDipTh must be completed in a maximum of 3 years. To take a study break that will extend the duration of the programme beyond this maximum a 'Deferral of Study' must be applied for (see page 18).

Study Progression

Students with a GPA of 7.0 (B) or higher in their PGDipTh courses are eligible to progress to MTh through one of the following options:

- Enter the 120-credit MTh programme which consists of a 40,000 word Level 9 Thesis.*
- Transfer their PGDipTh credits to a 240-credit MTh enrolment and complete:
 - One more L8 course plus a 90-credit, 30,000 word L9 Thesis.*
 - Two more L8 courses plus a 60-credit, 20,000 word L9 Dissertation. *

*a pre-requisite for L9 entry is successful completion of the R351 Postgraduate Research and Writing course. If a PGDipTh student plans to progress onto the 120-credit MTh this course needs to be taken as part of the PGDipTh.

BACHELOR OF THEOLOGY (HONOURS) (BTh(Hons))

Programme Summary

NQF Level	8 – 120 credits
Duration	Full-time for one year, part-time options available
Starts	February and July
Places	Open – Selection criteria apply
Campus	Henderson and Distance Learning
Tuition	\$7,812 plus Student Services Fee
Structure	30 credits in research methods, 30 credits in honours special topic, and 60 credits in an honours research project

Career Opportunities

Church leadership

Paid employment in areas such as

- Pastoral Leadership
- Missional Leadership
- Vocational leadership
- Lecturer
- Researcher
- Author
- Para-church work

Professional development

Effective service as a church member

Personal Christian growth

Workplace Christians

Further study at masters and doctoral level

Outline

The Bachelor of Theology (Honours) programme recognises distinguished study at undergraduate level (level 7) and extends that into study and research at level 8. This is a programme of study for those who have successfully completed three years of undergraduate study in theology and want to extend this into graduate level research and writing.

The BTh(Hons) programme is for academically distinguished BTh students who are wanting to develop their research skills for a fast track to PhD.

On completion of the Bachelor of Theology (Honours) Laidlaw graduates will:

- Have developed skills in advanced research and writing.
- Be able to disseminate the results of advanced research to wider networks.
- Engage in self-directed learning and advanced study.
- Demonstrate intellectual independence, analytic rigour, and the ability to understand and evaluate new knowledge and ideas.
- Demonstrate the ability to identify topics for original research, plan and conduct research, analyse results, and communicate the findings to the satisfaction of subject experts.
- Be prepared for higher levels of academic research.

Part-Time Options

Continuous enrolment is not necessary when studying part-time, however, the BTh(Hons) must be completed in a maximum of 3 years. To take a study break that will extend the duration of the programme beyond this maximum a 'Deferral of Study' must be applied for (see page 18).

Courses

R351.830 POSTGRADUATE RESEARCH AND WRITING (30 CREDITS)

This course centres on the methodology and practical aspects of advanced research. Students reflect on the theological, ethical, and missiological implications of research whilst developing advanced skills and methods which will support a research project. A range of scholars relate their own research experience and students engage with a number of contemporary approaches to critical research and writing. Students develop and hone the skills of research and writing by designing and implementing a small research project in the field of their interest.

R352.830 HONOURS SPECIAL TOPIC (30 CREDITS)

This course explores a directed course of study of a chosen discipline of theology. Through a selection of tutoring, class time, guided, and self-directed study, the student will demonstrate a mastery of a specific area of theological study and will communicate effectively relevant theories, principles, and applications over a series of essays.

R362.830 HONOURS RESEARCH PROJECT (60 CREDITS)

This course enables students to develop and deepen, in more specialised areas of study, the skills and knowledge acquired through successful completion of the BTh (or equivalent). Students, in discussions with a supervisor, decide on a research project and conduct their research under supervision. The project must reflect the methodologies and skills appropriate to the subject area in which they are working. This course allows students to develop their theological thinking in a systematic capacity, subject to the constraints and rigours of research methods appropriate to the respective disciplines. As part of the supervision process the student will present regular summaries of their progress to the lecturer and receive feedback on the progress of their proposal. **Those wishing to do their Honours Research Project in Biblical Studies require a biblical language prior to enrolling in this course.**

WORD COUNT FOR LAIDLAW BTH(HONS) RESEARCH PROJECT					
Research Output	Credits	Maximum Word Count ^{1,2}	Referencing and Bibliography	Appendices	Front material ³
BTh(Hons) Research Project	60	20,000	Excluded from word count		

¹ Word count includes footnoted material that is not related to referencing.

² This is the maximum word count allowed. The body text of the thesis should not exceed this.

³ Front material includes title page, abstract, table of contents, acknowledgements, lists of figures and illustrations, glossaries, and other material prior to the main body of the thesis or dissertation.

BTh (Honours) Awards

The Bachelor of Theology (Honours) will be awarded in one of four classes: First Class, Second Class (First Division), Second Class (Second Division), or Third Class in accordance with the table below:

Honours Class	GPA Range
First Class	8.0 and above
Second Class (First Division)	7.25-7.99
Second Class (Second Division)	6.5-7.24
Third Class	5.0-6.49

● *First Class Honours*

Students who achieve first class honours bring intellectual regour, excellence and insight to their work and reliably and consistently demonstrate an excellent level of synthesis and critique in relation to a depth of specialist knowledge and its impact in the broad context of their discipline.

● *Second Class Honours (First Division)*

Students who achieve second class honours, first division, demonstrate an insightful approach to the key issues and debates in their discipline. The work demonstrates a high level of understanding, synthesis, and critique of the issues and thinking.

● *Second Class Honours (Second Division)*

Students who achieve second class honours, second division, demonstrate an insightful approach to the key issues and debates in their discipline. The work demonstrates good understanding, synthesis, and critique of the main issues and thinking.

● *Third Class Honours*

Students who achieve second class honours demonstrate an adequate approach to the issues and debates in their discipline. The work demonstrates fair understanding, synthesis, and initial critique of the issues and thinking.

MASTER OF THEOLOGY (MTH)

Programme Summary

NQF Level	9 – 120, 180 or 240 credits
Duration	Full-time for 2-4 semesters, part-time options available
Places	Open – Selection criteria apply
Campus	Henderson and Distance Learning
Tuition	120-credit MTh: \$7,812 plus Student Services Fee 240-credit MTh: \$15,624.00 plus Student Services Fee
Web	www.laidlaw.ac.nz/postgraduate-study

Accelerated Pathways

PGDipTh and BTh(Hons) graduates may pursue MTh by an accelerated research-only pathway which reduces the credit requirements of the MTh to 120-credits.

Outline

The Master of Theology (MTh) programme provides an advanced level theological qualification for those who have already completed a recognised Bachelor's, Bachelor's with Honours, or a Postgraduate Diploma qualification in theology, with a GPA of 7.0 (B), and want to upgrade their qualifications in a specific area to extend their understanding of Christian Ministries.

The Master of Theology programme is 240 credits, of which 120, 90, or 60 must be at NZQA level 9, except where it builds on a Bachelor's with Honours degree or a Postgraduate Diploma in Theology, in which case the 120-credit Master of Theology programme with the 120-credit thesis may be enrolled in.

Objectives

On completion of the MTh programme, students should be able to:

- Evaluate critically a wide spectrum of literature in each of the coursework areas and in the areas of the research undertaken;
- Demonstrate mastery of the issues of debate in each of these areas;
- Give a fair and informed account of representative points of view in each subject area;
- Write a coherent narrative survey which is internally consistent, interacts critically with central issues, and demonstrates ability to form a reasoned opinion;
- Utilise sound hermeneutical principles in contextualising biblical theology within the subject areas studied;
- Demonstrate advanced skills of research, critical analysis and constructive synthesis, and application so as to make a significant contribution to knowledge in their area of specialisation;
- Demonstrate the distinctive contribution of biblical and theological principles to central issues in their subject areas;
- Participate in the international academic discussion of their field of study with a competence appropriate to Master's level;
- Reflect on the professional, ethical and relational implications of their study for ministry in the modern world; and
- Make available to the service of the church appropriate aspects of current scholarship in their field of study.

Part-Time Options

At level 8 part-time students do not need to be enrolled continuously, however, the 240-credit MTh must be completed in a maximum of 6 years. To take a study break that will take the duration of the programme beyond this maximum a 'Deferral of Study' must be applied for (see page 18).

At level 9, continuous enrolment is necessary. In extenuating circumstances students can apply to pause their thesis/dissertation with a 'Deferral of Study' (see page 18).

MTh Awards

The Master of Theology will be awarded Distinction or Merit in accordance with the table below:

Award	GPA Range
Distinction	8.0 and above
Merit	7.5-7.99

MTh Structure

The **240-credit MTh** combines a programme of level 8 taught courses and level 9 research, structured in one of the following ways:

- 4 x level 8 courses (including R351 PRW) plus 120-credit 40,000 word level 9 Thesis.
- 5 x level 8 courses (including R351 PRW) plus 90-credit 30,000 word level 9 Thesis.
- 6 x level 8 courses (including R351 PRW) plus 60-credit 20,000 word level 9 Dissertation.*

* Note: the 120-credit thesis option provides the most straightforward entry to PhD.

The **120-credit MTh** consists of 40,000 word level 9 Thesis (only available to those who have completed a PGDipTh).

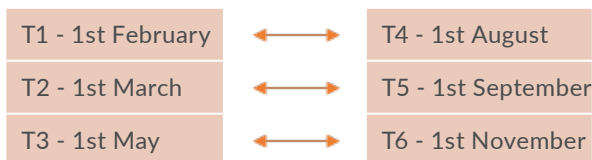
Level 9 Duration and Enrolment Intakes

Dissertation and Theses courses last 6-months each (with two being taken concurrently for full-time study).

Permission to enter level 9 needs to be given by the PG Lead prior to writing a research proposal.

To allow time for writing and approval of Research Proposal before starting, there are multiple enrolment intakes throughout the year, after which continuous enrolment is compulsory until completion.

Intakes:



MTh Entry

The requirement for entry into Level 9 study (Thesis/ Dissertation) is a GPA of 7.0 (B) or higher in level 8. Students can enter the MTh programme either directly, or through a PGDipTh.

Students with a GPA of 7.0 (B) or higher in their BTh can enter directly into the 240-credit MTh programme. However, MTh students with, after 4 level 8 courses, a GPA of below the 7.0 threshold will not be able to progress to level 9, but can apply to have the credits from their L8 courses in the MTh transferred to a PGDipTh enrolment to graduate with the PGDipTh qualification instead.

The normal pathway to MTh is through a PGDipTh after which students can apply to do a 120-credit MTh Thesis or transfer to the 240-credit MTh programme to do one of the other configurations listed above. This progression into MTh would be dependent on a minimum GPA of 7.0 (B) in the level 8 courses.

Students just below the 7.0 GPA threshold may be given the option of boosting their GPA with another level 8 course taken under Certificate of Proficiency enrolment.

If a student progresses into MTh enrolment and does another one or two level 8 courses, their progression to level 9 is still dependent on their GPA of all their level 8 courses being a minimum of 7.0 (B).

ADVANCED RESEARCH DEGREES (MPhil, PhD)

The Master of Philosophy (MPhil) and Doctor of Philosophy (PhD) are advanced research degrees, suitable for preparation to be an academic scholar and teacher. Under a memorandum of agreement with Auckland University of Technology (AUT) graduates of Laidlaw Graduate School may apply to enrol in the AUT MPhil or PhD programme and to undertake research in theology under the supervision or co-supervision of LGS faculty. Such students are subject in all respects to the regulations of AUT and should familiarise themselves with the AUT Calendar available on the AUT website www.aut.ac.nz. Students interested in any of these options should contact the Head of Theology.

Under another agreement, with the Department of Theology at the University of Otago, students may apply to enrol in the Otago PhD with an endorsement from Laidlaw Graduate School. If accepted by the University of Otago they may then satisfy the Otago residency requirements at a Laidlaw campus and with the approval of Otago, receive some of their supervision from LGS.

As an affiliated institution of the Australian College of Theology (ACT), Laidlaw offers a number of ACT postgraduate programmes including the Doctor of Ministry, Doctor of Theology, and Doctor of Philosophy.

Further details on advanced research degree options are available on the AUT website www.aut.ac.nz, the University of Otago website www.otago.ac.nz, or the Australian College of Theology website www.actheology.edu.au. Students interested in exploring this option should consult the Head of Theology.



GENERAL INFORMATION & REGULATIONS

Transfer credits and Recognition of prior Learning (RPL)

Application may be made to transfer credits from another tertiary institution. See the regulations for Recognition of Prior Learning (RPL) in the General Information and Regulations handbook found here <https://www.laidlaw.ac.nz/prospectus-and-handbooks/#genregs>

If after credit recognition there remains a shortfall of credits to complete a postgraduate programme, these must be made up by enrolment in one or more level 8 courses. In some circumstances, and with the permission of the postgraduate lead academic, a 15 credit course at level 7 may be undertaken for this purpose.

Approved Study at Another Institution

A student who is enrolled in a Laidlaw College postgraduate programme and who concurrently enrolls and completes courses at another tertiary institution, which they wish to credit to their Laidlaw College qualification must:

- Seek from the Head of Theology or nominee prior approval of the proposed concurrent enrolment and confirmation that the course will satisfy the regulations and requirements for the qualification for which the student is enrolled at this College and that appropriate credit may be granted.
- Apply for credit in accordance with these regulations when the official results are known.
- Where prior approval has not been sought, credit will not normally be granted.

Continuous Enrolment

It is a graduate school policy that enrolment for level 9 Thesis and Dissertation courses must be continuous, requiring enrolment in each subsequent intake after first enrolment. As such, your enrolment status at Level 9 should always fall into one of these four categories:

- **Enrolled**
- **Deferred (level 8 only)**
- **Extended (Thesis D paper only, please see the information below on 'Extensions')**

This policy does not include the summer semester.

General Information and regulations governing academic life at Laidlaw College form part of the portfolio of documents that makes up Laidlaw College's Academic Calendar. These regulations can be viewed online at www.laidlaw.ac.nz/gen-regs.

We would like to draw your attention to the following general regulations which apply specifically to postgraduate students:

Time allowed to complete a Programme of Study

At level 8 continuous enrolment is not required, however, all programmes have a maximum number of semesters or years in which you have to complete your programme. You will need to complete your programme within these time limits or have a deferral or extension approved. Deferrals and extensions may be approved if you are unable to complete because of exceptional circumstances beyond your control.

Unless otherwise specified in the regulations for a particular programme the standard time limits given below apply:

PROGRAMME	CREDITS	FULL-TIME	PART-TIME
Postgraduate Certificate	60	1 semester	2 years
Postgraduate Diploma	120	1 year/2 semesters	3 years
Master's Degree	240	2 years	6 years*
Bachelor of Theology (Honours)	120	1 year/2 semesters	3 years

* Including the time taken to complete internal credits transferred.

The opportunity to continue beyond these time limits will be considered on a case by case basis and with approval of the Academic Head.

In exceptional circumstances, the Academic Head may approve a personal programme of study which does not conform to the above requirements, however the total number of credits required for the completing of the programme cannot be adjusted.

Deferral of Study

A Deferral of Study should be applied for if a student:

- Is in Level 8 and wants to take a break from study that will take the duration of their programme beyond the time allowed (above), or
- Is in Level 9 and, due to extenuating circumstances, needs to take a break from their research. There will be no supervisor meetings or library access for the duration of the deferral. Level 9 deferrals can last up to 6 months.

Level 9 Extensions

A Thesis/Dissertation student may apply to the Postgraduate Committee for a 6-month extension. The extension application must be supported by a recommendation from the student's supervisor and will cost 75% of a 30-credit course fee (\$1,464.75 in 2024). The student will have their usual supervision and access to Laidlaw resources for the duration of the extension. If a student has extenuating circumstances that lead to them being unable to submit their thesis/dissertation on time then they are able to request a free extension through an Individual Learning Plan instead.

Grades for Postgraduate Courses

Grades for BTh(Hons), PGCertTh, PGDipTh and MTh (both taught courses and research papers, including thesis and dissertations) will be given as a numerical percentage first, which will then be converted into a letter grade. As an example, a high A would be awarded an 89, a low A would be awarded an 85, and a solid A would be awarded an 87. The range of each of the grades is noted below:

A+	90-100	Exceptional	Distinction
A	85-89	Excellent	
A-	80-84	Superior	
B+	75-79	Very Good	Merit
B	70-74	Good	Pass
B-	65-69	Competent	
C+	60-64	Satisfactory	
C	55-59	Acceptable	
C-	50-54	Marginal	

Plagiarism

It should be noted that plagiarism at level 8 and 9 is considered a serious academic transgression and is not acceptable in any form. Significant plagiarism will be regarded as a disciplinary matter and will result in the failure of the course. Please also refer to the General Regulations Document for a full outline of plagiarism regulations.

Postgraduate Appeals

If a postgraduate student or their supervisor feels that he or she is not able to establish an effective working relationship, either party may petition the Postgraduate Committee for the appointment of a new supervisor. If either the student or the supervisor feels that the student's work is not proceeding satisfactorily for reasons outside of their control, either party may, after consultation with the other, approach the Postgraduate Committee, for assistance.

Petitions to the Postgraduate Committee can be made through the Postgraduate Administrator.

If the student considers the assessment process has been inadequate or unfair, he or she may apply to the Academic Head through the Postgraduate Committee for a review of the process. If that is not satisfactory, an appeal to the Principal may be sought. In such cases, the relevant school will ensure that the issues of concern are addressed expeditiously to avoid significant loss of time in regard to the student's research or funding.

Postgraduate Study Support

Students commence postgraduate study with the goal of completing. Laidlaw's postgraduate programmes are adapted to part-time study and many find this is the only viable option. However this can mean a long arduous journey to completion. Laidlaw is therefore committed to facilitating full-time and accelerated study. The Summer Semester allows students to advance their study research goals, potentially completing 240 credits in less than two full years.

Laidlaw Library

Students are encouraged to make the Library homepage their first port of call. There is a wealth of information on the homepage, including links to resources via 'One Stop Search' and the Library catalogue. www.laidlaw.ac.nz/library

In addition to the homepage, there is a library brochure specifically designed for postgraduate students. Other libraries and archives of interest are listed in the brochure. Tailor-made services for postgraduate students are provided. When a Block Course is being taught, specific books are placed on Desk Copy and Short Loan if material is in high demand. Up to 30 books can be borrowed at a time with a 90-day loan period. However, books can be recalled for another borrower after two weeks and are then required to be returned within three days. The library can also request items on interloan from other libraries in order to keep students fully resourced. The Library subsidises interloans so the cost is only \$5 per item.

Laidlaw postgraduate students may arrange access to the Ayson Clifford Library of Carey Baptist College (www.carey.ac.nz) and to the Colin Library of Te Kupenga Catholic Theological College.

Postgraduate Student Support

Each year a postgraduate student representative is elected. This person is available to assist postgraduate students with student life issues.

Theology Research Desk Space

Research students can apply to the Head of Theology to have a desk in the Theology Research Hub on the Henderson campus assigned to them.



LEVEL 8 COURSES 2024

LIDLAW FIELDS OF STUDY

- 100 Biblical Studies (incl. Languages)
- 200 Christian Thought
- 300 History of Christianity
- 350 Research
- 400 Spirituality
- 500 Pastoral and Contextual Studies
- 600 Cross-Cultural Mission
- 650 Marketplace Studies
- 800 Education
- 900 Counselling

COURSE NUMBERING AND CREDIT SYSTEM

The Laidlaw course numbering system follows this pattern:

- The first digit indicates the field of study (e.g. 1 = Biblical Studies, 8 = Education, 9 = Counselling).
- The second and third digits further define the level and/or subject area (e.g. 120 = Old Testament).
- The first digit after the decimal point indicates the National Qualifications Framework level.
- The second and third digits after the decimal point indicate the credit value of the course (e.g. 15 = 15 credits, 30 = 30 credits).
- One credit is equivalent to ten hours of learning. A 15 credit course = 150 hours of learning.

Semester One 2024

R154.830 ROMANS AND THE MISSION OF GOD

Rev. Dr Mark Keown

29 April – 3 May | 9:30am – 4:30pm

This course explores Paul's letter to the Romans from a missional perspective. After considering a missional hermeneutic and engaging with critical scholarship on Romans, the letter will be located socially and historically in the mission of God and that of the Apostle. Consideration will be given to the genre and literary strategies of Romans in relation to the theme of "the gospel" and other themes. Paul's gospel behind and in the letter will be explored. Drawing on Romans, a range of missional themes will be investigated including the cosmic scope of mission and its completion, proclamation, the gospel as the power of salvation, missional agency, the miraculous, social justice exological mission, social transformation, patronage and hospitality, the sovereignty of God and human volition, prayer, the State, culture, Israel, theology, and apologetics.

R216.830 THIRD ARTICLE THEOLOGY

Dr Greg Liston, Rev. Dr Myk Habets

12 – 18 April | 9:30am – 4:30pm

Third Article Theology (TAT) is a new theological movement utilising a distinctly pneumatological approach to developing Christian doctrine. By examining Christian beliefs and practises through the lens of the Spirit, it aims to equip the church to "act its age" - proclaiming a timely message appropriate for our current context, leading to practical applications for life, mission and ministry. In addition to the lecturers, the course will include sessions from leading TAT scholars from around the world.

R351.830 POSTGRADUATE RESEARCH AND WRITING

Dr Greg Liston and Dr Terry Pouono

21-24 February | 9am - 5pm

22-24 March | Wed-Thurs 9am - 5pm, Fri 9am - 1:30pm

Writer's Workshop (Optional but highly recommended)

24-25 March | 9am - 5pm

Postgraduate Research and Writing introduces you to the wonder and joy of research. It is a course designed to inspire students with the vast breadth of cutting-edge investigations that are being done by the lecturers at Laidlaw, and then to teach them how to research themselves by partnering with one of these lecturers. Students will develop and hone the skills of research and writing by designing and implementing a short research project in their own area of interest.

R352.830 BTh (HONS) SPECIAL TOPIC

This course explores a directed course of study of a chosen discipline of theology. Through a selection of tutoring, class time, guided, and self-directed study, the student will demonstrate a mastery of a specific area of theological study and will communicate effectively relevant theories, principles, and applications over a series of essays.

R361.830 RESEARCH PAPER

Supervised research on an approved topic in an aspect of Theology and/or related disciplines.

R362.830 BTh (HONS) RESEARCH PROJECT

This course enables students to develop and deepen, in more specialised areas of study, the skills and knowledge acquired through successful completion of the BTh (or equivalent). Students, in discussion with a supervisor, decide on a research project and conduct their research under supervision. The project must reflect the methodologies and skills appropriate to the subject area in which they are working. This course allows students to develop their theological thinking in a systematic capacity, subject to the constraints and rigours of research methods appropriate to the respective disciplines. As part of the supervision process the student will present regular summaries of their progress to the lecturer and receive feedback on the progress of their proposal.

R512.830 FOUNDATIONS OF MINISTRY SUPERVISION

Dr David Crawley and Dr Karen Kemp

15 - 17 March | Wed-Fri 9.30am - 4.30pm

31 May - 2 June | Wed-Fri 9.30am - 4.30pm

This is the first of two courses which together comprise a Postgraduate Certificate in Theology, designed to equip graduates to offer professional supervision in a range of ministry contexts (understanding ministry in the broad sense of Christian vocation). It examines the nature and purpose of professional supervision, including its importance in people-related ministries. Several theoretical approaches to supervision will be evaluated and participants will reflect critically on theological, ethical, and cultural dimensions of offering supervision in their own contexts.





Semester Two 2024

R115.830 INTERPERSONAL FORGIVENESS IN THE BIBLE AND THE WORLD

Dr Richard Neville

5-9 Aug & 21-25 Oct | 9:30am - 4:30pm

Interpersonal forgiveness is one of the most profound ethical teachings bequeathed to us, and yet it has received surprisingly little attention from biblical scholars. This course is an opportunity to explore the biblical teaching on forgiveness in a focused manner. The engine room of the course will be a careful reading of texts from the Old and New Testaments. We will sharpen our work in the text by setting it in the context of other biblical themes, and by bringing it into dialogue with insights from other disciplines and with the realities of true-life stories of forgiveness.

R202.830 GOD'S WORLD: THEOLOGY AND SCIENCE IN CONVERSATION

Dr Greg Liston

25-26 July | 9.30am - 4.30pm

16-20 Sept | 9.30am - 4.30pm

This course engages in a constructive conversation between science and the Christian faith. Drawing on historical and contemporary perspectives, this course reflects critically on the theological and scientific inquiry and the nature of dialogue between science and theology. Key topics explored include models of science-religion interaction; creation and cosmology; biology, evolution and creationism; human nature, freedom and determinism; the implications of natural theology; and the ethical implications arising from theological and scientific beliefs in conversation. Students will be encouraged to develop a nuanced analysis of how scientific and theological truths can be critically integrated and to apply this understanding to a topic of contemporary significance.

R351.830 POSTGRADUATE RESEARCH AND WRITING

By distance throughout the semester

Dr Terry Pouono

Postgraduate Research and Writing introduces you to the wonder and joy of research. It is a course designed to inspire students with the vast breadth of cutting-edge investigations that are being done by the lecturers at Laidlaw, and then to teach them how to research themselves by partnering with one of these lecturers. Students will develop and hone the skills of research and writing by designing and implementing a short research project in their own area of interest.

R352.830 BTH (HONS) SPECIAL TOPIC

This course explores a directed course of study of a chosen discipline of theology. Through a selection of tutoring, class time, guided, and self-directed study, the student will demonstrate a mastery of a specific area of theological study and will communicate effectively relevant theories, principles, and applications over a series of essays.

R361.830 RESEARCH PAPER

Supervised research on an approved topic in an aspect of Theology and/or related disciplines.

R362.830 BTH (HONS) RESEARCH PROJECT

This course enables students to develop and deepen, in more specialised areas of study, the skills and knowledge acquired through successful completion of the BTh (or equivalent). Students, in discussion with a supervisor, decide on a research project and conduct their research under supervision. The project must reflect the methodologies and skills appropriate to the subject area in which they are working. This course allows students to develop their theological thinking in a systematic capacity, subject to the constraints and rigours of research methods appropriate to the respective disciplines. As part of the supervision process the student will present regular summaries of their progress to the lecturer and receive feedback on the progress of their proposal.

R508.830 REFLECTIVE PRACTICE FOR MINISTRY

Dr Maja Whitaker and Graeme Flett

21-25 August | Mon - Fri 9:30am - 4:30pm

This course explores the postures and practices that allow people in ministry to flourish in their ministry context. Students will learn to critically evaluate their ministry environment both culturally and contextually, to develop practices of discernment and habits of mind that produce resilience over the long-term, and to understand what they bring to their ministry role from their own personality, context and as a participant in community.

R510.830 ADVANCED PREACHING

Reuben Munn

26-30 August | 9:30am - 4:30pm,

This course will extend students' preaching ability by equipping them to proclaim Scripture effectively in a range of contexts to people of diverse ages and stages of life and faith. A variety of preaching forms will be examined and students will explore how these can be contextualised both to the medium in which their preaching takes place (digital, in-person, hybrid) and to the cultural and situational context of their unique audience.

R513.830 DEVELOPING A MINISTRY SUPERVISION PRACTICE

Dr David Crawley and Dr Karen Kemp

31 July - 2 August 2024 | 9am - 4:30pm

11-13 September 2024 | 9am - 4:30pm

This is the second of two courses which comprise a Postgraduate Certificate in Theology, designed to equip graduates to offer professional supervision in a range of ministry contexts (understanding ministry in the broad sense of Christian vocation). Through the integration of theory, practice, and theology, it enables practitioners to develop a framework for supervision appropriate to their own cultural and professional contexts, and to engage in critically reflective practice.

LEVEL 9 RESEARCH (MTH THESIS/DISSERTATION)

Pre-requisites

To progress to research at Level 9 in the MTh, a student must have achieved a grade point average in Level 8 taught papers of 7.0 (B), excluding the lowest mark achieved (in the case of the dissertation).

A pre-requisite to level 9 is the R351 Postgraduate Research and Writing course. Before starting, students must have organised a supervisor, have their Research Proposal approved by the Postgraduate Committee, and (if applicable) Ethics approval.

Thesis/Dissertation structure

Thesis and Dissertations are divided into 30-credit courses. Courses last 6 months each. Two courses are taken concurrently for full-time study.

120-CREDIT THESIS	90-CREDIT THESIS	60-CREDIT DISSERTATION
R383 Thesis A	R384 Thesis B	R381 Dissertation A
R384 Thesis B	R385 Thesis C	R382 Dissertation B
R385 Thesis C	R386 Thesis D	
R386 Thesis D		

All research must be of acceptable literary style, conform to the requirement for use of non-discriminatory language and contain acknowledgement of all sources and materials quoted. Thesis and Dissertations must not incorporate any material previously submitted by the candidate for any other degree or similar award.

THESIS (90 CREDITS, 30,000 WORDS / 120 CREDITS, 40,000 WORDS)

Insightful, accurate research lies at the heart of postgraduate study. A thesis submitted for the Master of Theology degree must be a work of literary quality. The style must represent a good standard of prose, as used in published academic theological works. A thesis should demonstrate advanced research skills and critical interaction with existing academic publications in the topic area at a level in advance of that required in other research papers. The work need not present original findings, but it must demonstrate independent research and show a full understanding of the complexity of debate surrounding the topic and be a significant contribution to evaluating the strengths and weaknesses of the existing approaches.

DISSERTATION (60 CREDITS, 20,000 WORDS)

A dissertation must be the student's own work, and demonstrate mastery of a conceptual understanding of the area or topic discussed which is commensurate with Master's level study. In moving beyond the range of skills appropriate to superior undergraduate degree candidates, the candidate must demonstrate evidence of reading across viewpoints and the ability to report different views with critical academic integrity. They must also demonstrate the ability to take a point of view and sustain it with evidence, and show evidence of analytical skill and ability to assess critically existing scholarly literature.

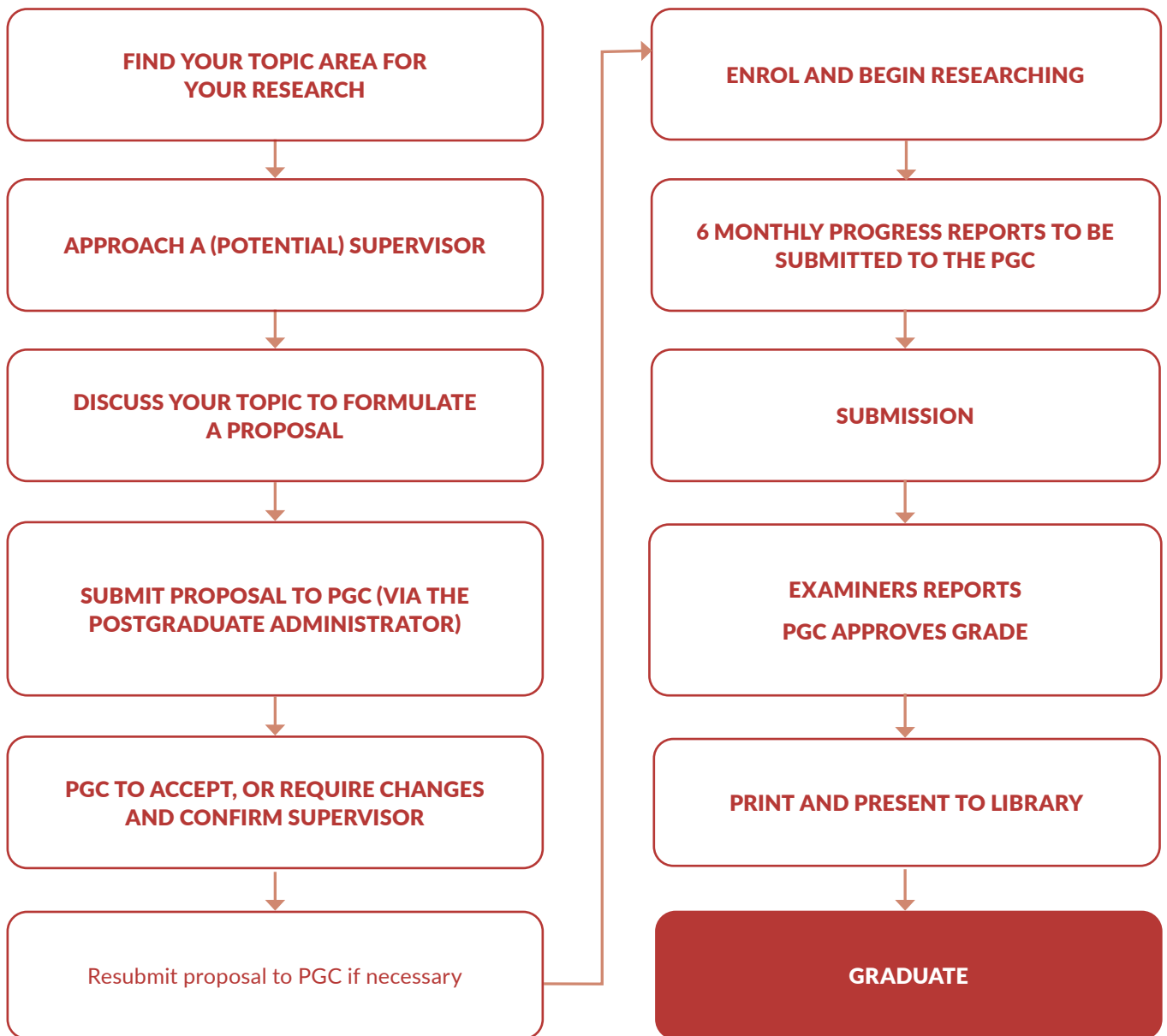
Enrolment Intakes

Level 9 courses are disengaged from normal semesters, to allow time for research proposal and ethics approval before starting.

There are 6 enrolment intakes per year and enrolment is continuous after starting (unless a 'Deferral of study is approved').

T1 - 1st February	←→	T4 - 1st August
T2 - 1st March	←→	T5 - 1st September
T3 - 1st May	←→	T6 - 1st November

RESEARCH TIMELINE



WORD COUNT FOR LAIDLAW BTH(HONS) RESEARCH PROJECTS AND MTH THESES AND DISSERTATIONS

Research Output	Credits	Maximum Word Count ^{1,2}	Referencing and Bibliography	Appendices	Front material ³
BTh(Hons) Research Project	60	20,000	Excluded from word count		
Masters Dissertation	60	20,000	Excluded from word count		
Masters Thesis	90	30,000	Excluded from word count		
	120	40,000	Excluded from word count		

¹ Word count includes footnoted material that is not related to referencing.

² This is the maximum word count allowed. The body text of the thesis should not exceed this.

³ Front material includes title page, abstract, table of contents, acknowledgements, lists of figures and illustrations, glossaries, and other material prior to the main body of the thesis or dissertation.

Language Requirements

Students will be required to demonstrate competence in any languages which are required for their research focus. Students wishing to undertake a dissertation or thesis in biblical studies must demonstrate an intermediate level competency in relevant biblical language(s). Where there is uncertainty as to whether language competency is required, the matter should be referred to the Head of Theology for a decision with a recommendation from the Supervisor. Depending on the nature of their research, some students may be required to purchase biblical studies software. Students should consult with their supervisor if unsure. Laidlaw has an agreement with Logos that can provide substantial discounts to qualifying students.

Preparing a Proposal

The preparation of a research proposal (and if appropriate, an ethics submission) takes place in consultation with your proposed supervisor or supervisors. The research proposal form can be accessed via Moodle or from the Postgraduate Administrator.

Supervision

Appointment of Supervisors

The Postgraduate Committee, in consultation with the candidate, will appoint a supervisor for each research student studying at LGS. Any choice of supervisor initiated by the candidate is, up to that point, provisional upon the approval of the Postgraduate Committee. Students shall discuss their study with their supervisor on a regular, defined schedule.

Supervision Contract

An explanation of both the duties of students and the duties of supervisors is available from the Postgraduate Administrator. Based on their discussion of these standard expectations, the student and supervisor(s) should draw up a written understanding of how the supervision of the thesis will operate, once a proposal has been accepted by the Postgraduate Committee. A proforma supervision contract is available from the Postgraduate Administrator.

Research Progress Reports

Research Progress Reports are to be completed by all MTh research candidates, and their supervisor, for every semester they are enrolled. Students submit their report to their supervisor by 23 March and 23 August. Supervisors then add their comments and submit the report to the Postgraduate Administrator by 30 March and 30 August. The Postgraduate Committee is notified of any issues.

Duties of Laidlaw Graduate School

Students have the right to be well-informed about the LGS examination procedure, the research profile of the supervisor, the presentation requirements of LGS, and any facilities and services to which they are entitled. Problems arising from supervision and disputes which cannot be satisfactorily resolved should be referred to the Postgraduate Committee through the Head of Theology for a review.

Writing your Thesis/Dissertation

All students must use a recognised academic style for footnoting and bibliographic formatting. The required referencing style is either SBL or Turabian (with SBL the preferred style from 2024). Students should consult the Laidlaw College 'Guidelines for Written Assignments' available on Moodle.

Plagiarism

It should be noted that plagiarism at level 8 and 9 is considered a serious academic transgression and is not acceptable in any form. Significant plagiarism will be regarded as a disciplinary matter and will result in the failure of the course. Please also refer to the General Regulations Document for a full outline of plagiarism regulations.

Progress

Progress reports are to be submitted to the PGC every 6 months of study prior to submission. Templates are available on Moodle or from the postgraduate administrator. These are necessary for the 30-credit L9 courses to be marked as complete (RC = Research Complete).

If the PGC notes insufficient progress (with no extenuating circumstances) students will be put on a 3-month study-plan with another progress report due at the end of 3 months. If insufficient progress is still noted the PGC may mark that 30-credit L9 course as not completed (DNC) and the student will have to re-take that course with a re-take fee of 75% of the full course fee.

Ethics Approval

All staff and students of Laidlaw College undertaking research that involves human participation are required to ensure that their research complies with the highest ethical standards. This includes research that may be undertaken within a taught course. To this end, approval of any research that involves human participants must be submitted to the Laidlaw Ethics Committee for approval. Ethics Committee approval must be granted before any such research commences. Undergraduate research involving human participation will only be approved in exceptional circumstances.

The Ethics Committee will consist of at least five members, drawn from the academic staff with relevant research experience including a minimum of one external member. The Ethics Committee's concern will be to ensure that human rights issues are properly addressed, any potential harm is minimized and managed, informed consent has been obtained, confidentiality and anonymity will be maintained, and that all the necessary documentation to support this is in place.

It is the responsibility of both the supervisor and the researcher to be aware that certain research may need Ethics Committee approval. All documentary evidence required from the researcher, must be in place, and the approval of the ethics committee obtained before investigative procedures involving human subjects and the resultant gathering and storage of information may begin.

All documentary evidence required from the researcher must be in place, and the approval of the ethics committee obtained, before investigative procedures involving human subjects and the resultant gathering and storage of information may begin.

Human Research Ethics Protocol

The ethics protocol is in four sections:

- Section 1: a statement of policy on research and teaching activities that involve human participants.
- Section 2: an application coversheet, which records the researcher's contact details, the details of the supervisor and the title of the research project.
- Section 3: a checklist of yes/no responses that identifies key issues.
- Section 4: the proforma which provides the Ethics Committee with more detail about the project and particularly the interaction with research subjects.

Statement of Principles and Policies on Human Research Ethics

Applicants for Ethics Committee approval for research should complete the required forms and submit them to the chair of the Ethics Committee through the Postgraduate Administrator. Final approval of any proposal is subject to an Ethics Committee recommendation.

Any teaching and research proposals that require ethical approval must evidence:

- research or teaching merit;
- participants' informed consent which is given free from any form of coercion;
- respect for participants' rights of privacy and confidentiality;
- minimisation of the risk of harm to participants;
- special care for vulnerable participants;
- limitation of, and justification for, any use of methods involving lack of full disclosure such as 'blind' groups, 'double blind' groups, or control groups;
- appropriately qualified supervision;
- avoidance of any conflict of interest;
- respect for societies and cultures of participants;
- freedom to publish the results of research, while maintaining the anonymity of individuals;
- compliance with other standards where appropriate;
- appropriateness of remuneration where applicable.

For guidance on these issues and for an Ethics Protocol form, contact the Graduate School.

Submission / Thesis Dissertation

Thesis

The thesis is to be in A4 format, in 11- or 12-point type script, in at least one and a half line spacing with a left-hand margin of at least 30 mm in width and left justified only. Each thesis must be accompanied by a cover sheet. These are available from the Postgraduate Administrator and need to be signed by the student and supervisor. The thesis must be submitted on Moodle to be checked for plagiarism and as a record of the date of submission. The thesis must have the title, author's name, the institution (Laidlaw Graduate School), year of submission and the award on the front cover. The first page should state the title, author's name, institution (Laidlaw Graduate School), the year and the wording, 'A thesis submitted in partial fulfilment of the requirements of the MTh.' There should also be a disclaimer of plagiarism, 'No other source has been used for this thesis except where due acknowledgement has been made in the text.' The thesis must include an abstract, not exceeding 500 words, in a form suitable for separate publication and included as the first page after the table of contents.

Two printed hard copies (spiralbound) is optional though may be required at the examiner's request. If requested by the examiner the Postgraduate Administrator will print and bind it.

Dissertation

Dissertations should be in A4 format, in 11 or 12-point type script, in at least one and a half line spacing with a left-hand margin of at least 30 mm in width, and left justified only. The dissertation must be accompanied by a cover sheet. These are available from the Postgraduate Administrator and need to be signed by the student and supervisor. The dissertation must be submitted on Moodle to be checked for plagiarism and as a record of the date of submission. The dissertation must have the title, author's name, the institution (Laidlaw Graduate School), year of submission and award on the front cover. The first page should repeat the title, author's name, institution (Laidlaw Graduate School), the year and the wording, 'A dissertation submitted in partial fulfilment of the requirements of the MTh.' There should also be a disclaimer of plagiarism, 'No other source has been used for this dissertation except where due acknowledgement has been made in the text.' Dissertations should contain a synopsis of about 300 words.

Extension to Thesis or Dissertation

For students who have come to the end of their enrolment in the Thesis or Dissertation, but have not yet completed their research to a suitable state for submission, one extension of 6 months can be applied for.

An application must be received prior to the original due date of the research project. If an extension application is not received and the paper is not submitted by the due date, the enrolment will be considered to have lapsed and the student

will be awarded a grade of "Did Not Complete" (DNC).

- A maximum of one extension per thesis/dissertation will be granted.
- Extensions will only be considered for those enrolled in the final portion of their thesis or dissertation.
- The student should use the Application for Extension to Thesis/Dissertation Form.
- This application must be supported in writing by the research supervisor.
- Conditions may be placed on the extension, such as meeting milestones.
- The form should be submitted for consideration to the Postgraduate Committee, via the Postgraduate Administrator. There is a cost of \$1464.75 (2024) to apply for extended status.

Examination

The MTh thesis and dissertation will be examined by two appropriately qualified examiners, one of whom must be external to Laidlaw, appointed by the Postgraduate Committee. Examinations typically take two to three months, and examiners remain confidential.

Research submitted for the MTh will be evaluated according to the Laidlaw College grading system (see the General Information and Regulations section of the Academic Calendar) based on the following criteria:

- (1) Literary style and presentation: skilful use of prose; coherence; clarity; academic bibliographic and footnoting format.
- (2) Advanced independent research skills: breadth of reading across a variety of viewpoints; accurate representation of scholarly discussion; appreciation of complexity of debate; historical awareness in use of sources.
- (3) Critical evaluation: analysis and synthesis of strengths and weaknesses of existing approaches; ability to sustain a point of view with evidence; critical interaction with international scholarly debate; well-supported conclusions.
- (4) Integration of biblical and theological principles with central issues in the subject area, utilising sound hermeneutical principles.
- (5) Awareness of contribution of the area of research to the wider academic, ecclesial, missional or social environment; awareness of the professional, ethical and relational implications of their study for ministry.
- (6) For theses, overall depth of engagement with topic; ability to marshal and interpret a substantial body of evidence. The examiners are required to report recommending that:
 - (a) the thesis be passed with an assigned letter grade;
 - (b) the thesis be passed with an assigned letter grade provided the minor amendments in the examiners' reports are completed to the satisfaction of the student's supervisor;

- (c) the thesis not be passed, but opportunity be given for the thesis to be rewritten and resubmitted for examination; or
- (d) the thesis not be passed, with no opportunity for resubmission.

The PGC will award a grade based on the recommendation of examiners. In the event that the examiners disagree on the grade to be awarded the following will occur:

- The Postgraduate Committee will ask the examiners to exchange reports and attempt to reach agreement on the grade to be awarded. If the examiners cannot agree but the difference is within 2 points the Postgraduate Committee will make a decision.
- If the examiners cannot agree to within 2 grade points an external moderator will be appointed to consider the reports and recommend a grade to the Committee. The Postgraduate Committee (or the Academic Head as representative) will then make a decision based on the recommendations.
- If one examiner recommends failing the thesis or dissertation and the other recommends a pass, a third examiner will be appointed. The Postgraduate Committee (or the Academic Head as representative) will then make a decision based on the recommendations.

Making Corrections to marked Thesis and Dissertations

If thesis or dissertation examiners have required corrections to be made, students are required to complete those corrections within six weeks of being notified of their result. If corrections have not been completed by eight weeks, the Postgraduate Lead will consider appropriate action which may include a further formal extension (which includes the associated enrolment fee of \$800) or allocating a DNC in consultation with the Postgraduate Committee.

Extension for Resubmission

An extension of one semester will be granted in cases where a thesis or dissertation has been examined and has not been passed, but given the opportunity to be rewritten and submitted for examination. The fee incurred for such an extension will be the equivalent of a normal semester's extension of \$1464.75 (2024).

Thesis/Dissertation Final Submission

The degree will not be awarded without a final copy of the research, corrected in accordance with the submission requirements, being presented to the Academic Head for inclusion in the Deane Memorial Library of Laidlaw College.

The final copy is required to be hardbound. It must have the title, author's name, the institution (Laidlaw Graduate School), year of submission and award in gold-blocked lettering on the front cover and the same on the spine (with abbreviated title). Copies should be single sided, 35mm on the left side, 20mm all around with 1.5 spacing. For bound hardcopies, Laidlaw recommends The Bookbindery (thebookbindery.co.nz).

In addition to the hardbound copy an electronic copy should also be submitted to the Deane Memorial Library by email or USB, accompanied by a Consent Form, available from the Postgraduate Administrator.

Creative Works Research

A student may choose to complete a research Master of Theology through a thesis/dissertation comprising of a creative work with an associated exegesis concerning that work.

Supervision of the student and their project should be carried out by one of more supervisors.

What are creative practices/ creative works?

- Creative practice research embraces post-formal ways of knowing i.e. critical thinking expressed via symbolic representation.
- It operates at interdisciplinary borders in order to contribute to knowledge i.e. theology and creative writing.
- It recognises that mainstream or conventional academic studies do not always align or adequately/appropriately express knowledge in some subject areas i.e. interpreting poetry, creative writing, art, understanding human experience, understanding emotions or feelings (desire, love, grief, awe), articulating God.

The creative works pathway: Master of Theology (Laidlaw College)

Thesis/Dissertation presentation comprising an exhibition of creative work and exegesis (project narrative).

The creative works component comprises an exhibition of creative work which may take the form of performance (dance, theatre, haka, waiata), manuscript (novella, novel, anthology, music), fine arts exhibition (whakairo, raranga/textiles/weaving, photography, painting) or another creative endeavour approved by the Academic Head. This creative work must be undertaken during the period of enrolment in the Master of Theology, that is, it cannot be something that was completed beforehand. The exegesis is a critical narrative accompanying the creative work of 20000 words for a 120 credit Master's thesis; 15000 words for 90 credit thesis, 10000 words for a 60 credit dissertation. The thesis is delivered in two parts:

[A] CREATIVE WORKS PATHWAY ARTEFACT/EXHIBIT

- intentional creation and curation of a creative artefact
- the artefact performatively enquires into an issue of biblical or theological significance
- the artefact integrates aesthetics, artistic expertise and theology with sophistication
- the artefact is compellingly presented, performed or exhibited

[B] CREATIVE WORKS PATHWAY EXEGESIS/NARRATIVE CHAPTER FORMAT/SECTIONS (EXEMPLAR):

- A critical introduction and framing
- A robust review of the literature
- Detailed description of methodologies
- Discussion of relevant theoretical, theological and critical context
- Discussion which overviews and undergirds the creative work
- Discussion of outcomes/contribution to the discipline of theology/biblical studies

Submission for Examination

1. The Academic Head shall consult the thesis supervisors as to whether the creative and exegetical elements are submitted at the same time for examination or whether the exegetical element be examined first, with a subsequent examination of the creative element (e.g. as part of an exhibition or performance) at a later date.
2. The exegetical element of the thesis should be submitted for examination as per the regular Laidlaw Graduate School requirements for a written thesis.
3. The creative element of the thesis should be submitted in an appropriate form for examination as per the guidance of the Graduate School. Where appropriate a discussion may be scheduled between the student and examiners in the presence of an exhibition/presentation of the creative element.

Examination of a creative works thesis

The creative works MTh is examined by an internal and external scholar with relevant specialisation and understanding/appreciation of creative works pathways. Some creative works can be examined in the usual way (thesis emailed to examiners) i.e. manuscript, anthology etc. For a performed or exhibited artefact, the student must work with the college to identify a location (usually on campus), and time so that both examiners have an opportunity to engage with the creative work. The exegesis is provided to the examiners in advance.

Final Submission to the Library after Examination

The degree will not be awarded without a final copy of the research, corrected in accordance with the submission requirements, being presented to the Academic Head for inclusion in the Deane Memorial Library of Laidlaw College unless a creative-work printing exemption has been approved by the PGC.

For a creative works thesis this involves the following.

1. A copy of the exegetical element of the thesis as per the guidelines in the Laidlaw Graduate Handbook section Thesis/Dissertation Final Submission.
2. Documentary evidence of the creative work, if the work itself is unable to be lodged with the library.

This evidence may include:

- Audio/visual material from the creative element;
- Audio/visual material and photographs documenting the creative element;
- Other appropriate evidence as required by the Library.

Planning ahead

Creative Works pathways are for postgraduate students who are invested in exploring theological or biblical studies via creative or performative practices. There are opportunities at most New Zealand universities to continue at doctoral level in creative works mode. Creative Works pathways are readily accepted and considered mainstream at both AUT and Auckland University. Some international universities and some NZ theological schools do not recognise creative works pathways so this should be considered by the student when selecting this pathway.

Scholarships

Farmer Fund Postgraduate Scholarship

Amount: 100% tuition fees (excludes student services fee)

Eligibility: Any student engaged in full-time research through Laidlaw College in conjunction with the Laidlaw College MTh, AUT MPhil, AUT PhD, or ACT postgraduate programmes¹

With the generous assistance of the Farmer Fund, Laidlaw College offers up to six annual tuition scholarships to students researching in an area of applied or practical theology. This could include an interdisciplinary project engaging with theology and one or more other disciplines such as education or counselling, or could be an application of theology to a particular sphere of life. A central requirement of these scholarships is the expectation that a practical report or professional resource will be produced alongside the thesis or dissertation itself for the benefit of the church and/or wider community in Aotearoa New Zealand.

Research projects within the Laidlaw College MTh, AUT MPhil, AUT PhD or ACT postgraduate research programmes may be eligible. Securing the support of an approved Laidlaw College research supervisor for the project is a requirement of the scholarship. Students within research programmes spanning multiple years of full-time study, such as PhD or DMin programmes, may apply annually for subsequent tuition funding.

Scholarships will be awarded on the basis of academic and leadership potential and project suitability. Laidlaw College reserves the right not to award any scholarship in any given application round.

Please complete the online application form on the Laidlaw website (<https://www.laidlaw.ac.nz/scholarships/>) and attach the following:

1. Evidence of eligibility, including institution, programme of study, and supervisor(s) name(s)
2. A full academic transcript
3. A research plan
4. A written reference from an academic referee, and the name of a second referee

¹ ACT postgraduate programmes (MA, DMin or PhD) are offered under the accreditation of The Australian College of Theology, not the New Zealand Qualifications Authority (NZQA), and as such are not eligible for student loans.

Matt Alexander Postgraduate Scholarship (Māori)

Amount: \$5,000 per semester plus 100% of tuition fees (excludes student services fee)

Eligibility: Any Māori student entering their thesis research year within the MTh programme

With the generous assistance of the Longview trust, Laidlaw offers one Master of Theology Scholarship to a Māori student each year. Each Scholarship is worth \$10,000 per year, to which Laidlaw will add a full fees scholarship.

The priority will be students entering the thesis research year. In such cases the scholarship will be for a period of one year (two semesters). In exceptional cases up to three semesters of full-time study (including coursework) may be approved – i.e. \$15,000 plus tuition fees).

1. Applicants will be theology or ministry graduates, engaged in or qualified to enter Laidlaw's Master of Theology programme. The scholarships will be for full-time study at Laidlaw for a thesis-based Master of Theology degree.
2. Scholarships will be awarded on the basis of academic and leadership potential. Laidlaw reserves the right not to award either or any scholarship in any given round.

Please complete the online application form (www.laidlaw.ac.nz/scholarships), and attach the following:

1. Academic Transcript
2. Academic Reference (Laidlaw)
3. Academic Reference (External)
4. Plan of Study (including research proposal for Thesis/Dissertation)
5. Evidence of eligibility for acceptance in Programme of Study

Successful applicants will meet with members of the Longview Trust to discuss their plans and study.

Matt Alexander Postgraduate Scholarship (Pasifika)

Amount: \$5,000 per semester plus 100% of tuition fees (excludes student services fee)

Eligibility: Any Pasifika student entering their thesis research year within the MTh programme

With the generous assistance of the Longview trust, Laidlaw offers one Master of Theology Scholarship to one Pasifika student each year. Each Scholarship is worth \$10,000 per year, to which Laidlaw will add a full fees scholarship.

The priority will be students entering the thesis research year. In such cases the scholarship will be for a period of one year (two semesters). In exceptional cases up to three semesters of full-time study (including coursework) may be approved – ie \$15,000 plus fees).

1. Applicants will be theology or ministry graduates, engaged in or qualified to enter Laidlaw's Master of Theology programme. The scholarships will be for full-time study at Laidlaw for a thesis-based Master of Theology degree.
2. Scholarships will be awarded on the basis of academic and leadership potential. Laidlaw reserves the right not to award either or any scholarship in any given round.

Please complete the online application form (www.laidlaw.ac.nz/scholarships), and attach the following:

1. Academic Transcript
2. Academic Reference (Laidlaw)
3. Academic Reference (External)
4. Plan of Study (including research proposal for Thesis/Dissertation)
5. Evidence of eligibility for acceptance in Programme of Study

Successful applicants will meet with members of the Longview Trust to discuss their plans and study.

International Postgraduate Scholarship

Amount: \$3,000 for PGDipTh / \$5,000 for MTh

Eligibility: Any first year postgraduate international student (Postgraduate Diploma in Theology and Master of Theology students)

The presence of international students at Laidlaw College adds significantly to the richness and vibrancy of our classrooms, scholarship and community life. We are committed to being an intercultural college and welcome participation in our programmes from students from abroad.

To qualify for consideration of the award of a scholarship you should meet the following criteria:

1. Demonstrate a commitment to what it means to being a Christian.
2. Be able to show evidence of a high level of academic achievement in your previous tertiary study history in completed qualifications, and a high level of community involvement.
3. Be able to provide an academic reference as to your ability.
4. Have applied for and been accepted to a programme of study at Laidlaw College.

The link for the scholarship application form will be sent on receipt of a completed application to study.

Liddle Scholarship for International Students

Amount: Up to \$1,500

Eligibility: Any current undergraduate/postgraduate (PGDipTh & MTh) international student

The presence of international students at Laidlaw College adds significantly to the richness and vibrancy of our classrooms, scholarship and community life. We are committed to being an intercultural college and welcome participation in our programmes from students from abroad.

To qualify for consideration of the award of a scholarship you should meet the following criteria:

1. Be able to show evidence of academic achievement in your first year of study at Laidlaw College, and involvement in the Laidlaw community.
2. Demonstrate genuine financial hardship.

Please complete the online application form (www.laidlaw.ac.nz/scholarships)



APPENDIX:

ALL POSTGRADUATE COURSES

R100's - Biblical Studies

R102.830 GENESIS: CREATION AND BLESSING

Genesis makes a unique and important contribution to the biblical canon. This course explores that contribution by looking at the distinctive place Genesis occupies in the biblical narrative and investigating its rich theological content. It investigates the sophisticated composition of the book and its carefully crafted narrative episodes. The student will also encounter the book's remarkable capacity for speaking to contemporary concerns in the complex cultural landscapes that exist within Aotearoa New Zealand and beyond.

R115.830 INTERPERSONAL FORGIVENESS IN THE SCRIPTURE

This course pursues a Christian understanding of interpersonal forgiveness. It begins with close readings of biblical texts dealing with forgiveness and proceeds to an investigation of several related topics such as emotion, disposition, character, and virtue ethics. By this means it is possible to understand more clearly not just what it means to forgive, but also how to become a better forgiver. These readings in the biblical text are supplemented with important insights from other disciplines, including psychology, moral philosophy, classics, and neuroscience. The course also reflects on what makes Christian interpersonal forgiveness unique, why it occupies such an important place in the Christian faith, and its application to the complex cultural landscapes that exist within Aotearoa New Zealand and beyond.

R121.830 OLD TESTAMENT NARRATIVE: ITS MESSAGE AND METHOD

This course engages in a detailed study of the content and form of Old Testament narrative, and the hermeneutical and theological issues raised by narrative approaches to the Old Testament, illustrated by study of selected Old Testament narrative texts. The significance for preaching and application of the narrative form and content within the various cultural contexts of Aotearoa New Zealand and beyond is also considered.

R140.830 THE GOSPEL AND ITS PROCLAMATION

Our everyday world is an increasingly dynamic mix of faiths, philosophies, cultures, and ideologies in both local and global contexts. In such a world, Christians and their communities still have the imperative to share Christ but often struggle with traditional paradigms of the gospel and its effective proclamation. This course goes deeply into New Testament exploring diverse understandings of the gospel to strengthen our capacity to present the gospel today. It also explores patterns of its proclamation, providing a basis for sharing the gospel in posture, proclamation, and praxis in the complex cultural landscapes that exist within Aotearoa New Zealand and beyond.

R149.830 JESUS IN A WORLD OF COLLIDING EMPIRES

This course explores Paul's letter to the Romans from a missional perspective. After considering a missional hermeneutic and engaging with critical scholarship on Romans, the letter will be located socially and historically in the mission of God and that of the Apostle. Consideration will be given to the genre and literary strategies of Romans in relation to the theme of "the gospel" and other themes. An articulation of Paul's gospel behind and in the letter will be explored. Drawing on Romans, a range of missional themes will be investigated, and their application to the complex cultural landscapes that exist within Aotearoa New Zealand and beyond. These themes include the cosmic scope of mission and its completion, proclamation, the gospel as the power of salvation, missional agency, the miraculous, social justice, ecological mission, social transformation, patronage and hospitality, the sovereignty of God and human volition, prayer, the Spirit, the State, culture, Israel, theology, and apologetics.

R154.830 ROMANS AND THE MISSION OF GOD

This course explores Paul's letter to the Romans from a missional perspective. After considering a missional hermeneutic and engaging with critical scholarship on Romans, the letter will be located socially and historically in the mission of God and that of the Apostle. Consideration will be given to the genre and literary strategies of Romans in relation to the theme of "the gospel" and other themes. Paul's gospel behind and in the letter will be explored. Drawing on Romans, a range of missional themes will be investigated including the cosmic scope of mission and its completion, proclamation, the gospel as the power of salvation, missional agency, the miraculous, social justice, ecological mission, social transformation, patronage and hospitality, the sovereignty of God and human volition, prayer, the State, culture, Israel, theology, and apologetics.

R155.830 SPECIAL TOPIC: BIBLICAL STUDIES

This course provides an opportunity for students to engage in biblical studies in an advanced way. The course involves a concentrated study of a biblical text, biblical issue, or other aspect of biblical studies including but not limited to hermeneutics, interpretative method, or text critical studies. Critical issues of background and context are explored, and contemporary applications to the complex cultural landscapes that exist within Aotearoa New Zealand and beyond are investigated.

R200's - Christian Thought

R202.830 GOD'S WORLD: THEOLOGY AND SCIENCE IN CONVERSATION

This course engages in a constructive conversation between science and the Christian faith. Drawing on historical and contemporary perspectives, this course reflects critically on the nature of theological and scientific inquiry and the nature of dialogue between science and theology. Key topics explored include models of science-religion interaction; creation and cosmology; biology, evolution and creationism; human nature, freedom and determinism; the implications of natural theology; and the ethical implications arising from theological and scientific beliefs in conversation. Students will be encouraged to develop a nuanced analysis of how scientific and theological truths can be critically integrated and to apply this understanding to a topic of contemporary significance within the cultural landscape of Aotearoa New Zealand and beyond.

R215.830 THEOLOGIAN IN CONTEXT

This course is a close study of one major theologian (or a group of closely related theologians), past or present, in the intellectual context of their day. Through the study of selected writings of the theologian and secondary sources, their theological method and commitments will be analysed and their contribution to theology past and present evaluated, particularly as it impacts on the contemporary cultural and contextual situation within Aotearoa New Zealand and beyond.

R216.830 THIRD ARTICLE THEOLOGY

Third Article Theology (TAT) is a new theological movement utilizing a distinctly pneumatological approach to developing Christian doctrine. TAT examines Christian beliefs and practices through the lens of the Holy Spirit and aims to equip the church to 'act its age' - proclaiming a timely message appropriate for our current context, leading to practical applications for life, mission, and ministry, that are particularly in complex cultural landscapes that exist within Aotearoa New Zealand and beyond.

R222.830 HUMANITY FULLY ALIVE

This course explores Christian understandings of humanity as individual human beings and in community. The course focuses on topics such as human beings as the 'image and likeness of God', understandings of body and soul, personhood and identity, the significance of community, sexuality and gender, discrimination, ecological concerns, and eschatological perspectives on human destiny.

R223.830 THEOLOGY AND MEDIA

This course critically examines key areas of religious communication including the coverage of religion by mass media, how religious communities interact with the media, and how mass media shape perceptions of religion. Particular emphasis will be placed upon the interaction between Christianity and media, in the complex cultural landscapes that exist within Aotearoa New Zealand and beyond.

R233.830 SPIRIT CHRISTOLOGY AND MODELS OF SANCTIFICATION FOR MINISTRY

The contemporary field of Spirit Christology, which looks at the Holy Spirit's role in the life and mission of Jesus Christ, has focused on questions concerning Trinitarian theology, Christology, salvation in Christ, and to some extent life in Christ. This course extends the research in this field in a practical direction by asking how the same Spirit who dwells in Christ and guides him in his life and mission shapes the lives of his disciples today. Such a question yields a models-based theology of sanctification informed by a Christ-shaped approach to personal growth, ministry and witness. Through the study of five models of sanctification grounded in scriptural, patristic, reformation and contemporary narratives of life in Christ, students will learn to humbly discern and articulate theologically the movement of the Spirit of Christ in their own lives and vocations in church and world.

R234.830 ADVANCED ECCLESIOLOGY

This course provides an advanced exploration of selected contemporary issues and trends in the doctrine and practice of ecclesiology. Various understandings of the church, as expounded by contemporary theologians and exhibited in practise across different cultures and denominations are examined and evaluated through the lenses of Scripture, tradition, reason, and experience. This course equips students to derive a rigorous and robust understanding of what the church is, God's intention for it as compared with its current realisation, and to investigate how this understanding affects pragmatic decisions about what the church does. It equips students to make wise ecclesial decisions based on coherent theological understanding in the complex cultural landscapes that exist within Aotearoa New Zealand and beyond.

R235.830 SPECIAL TOPIC: OTHER (THEOLOGICAL & RELIGIOUS STUDIES)

This course provides an opportunity for students to engage in a specific area of theological or religious studies that is not already covered elsewhere in the curriculum. The course involves a concentrated study of a theological or religious theme, topic, issue, or text. Critical issues of background and context are explored, and contemporary applications to the complex cultural landscapes that exist within Aotearoa New Zealand and beyond are investigated.

R236.830 SPECIAL TOPIC: CHRISTIAN THOUGHT AND HISTORY

This course provides an opportunity for students to engage in theological or historical disciplines in an advanced way. The course involves a concentrated study of a theological or historical issue. Critical issues of background and context are explored, and contemporary applications to the complex cultural landscapes that exist within Aotearoa New Zealand and beyond are investigated.

R300's - Research

R351.830 POSTGRADUATE RESEARCH AND WRITING

This course centres on the methodology and practical aspects of advanced research. Students reflect on the theological, ethical, and missiological implications of research project. A range of scholars relate their own research experience and students engage with a number of contemporary approaches to critical research and writing. Students develop and hone the skills of research and writing by designing and implementing a small research project in the field of their interest.

R352.830 BTh (HONS) SPECIAL TOPIC

This course explores a directed course of study of a chosen discipline of theology. Through a selection of tutoring, class time, guided, and self-directed study, the student will demonstrate a mastery of a specific area of theological study and will communicate effectively relevant theories, principles, and applications over a series of essays.

R361.830 RESEARCH PAPER

Supervised research on an approved topic in an aspect of Theology and/or related disciplines.

R362.830 BTh (HONS) RESEARCH PROJECT

This course enables students to develop and deepen, in more specialised areas of study, the skills and knowledge acquired through successful completion of the BTh (or equivalent). Students, in discussion with a supervisor, decide on a research project and conduct their research under supervision. The project must reflect the methodologies and skills appropriate to the subject area in which they are working. This course allows students to develop their theological thinking in a systematic capacity, subject to the constraints and rigours of research methods appropriate to the respective disciplines. As part of the supervision process the student will present regular summaries of their progress to the lecturer and receive feedback on the progress of their proposal.

R300's - Research

R381.930 DISSERTATION A

R382.930 DISSERTATION B

R383.930 THESIS A

R384.930 THESIS B

R385.930 THESIS C

R386.930 THESIS D

R400's - Christian Thought

R405.830 MENTAL HEALTH AND HUMAN FLOURISHING

Mental distress can be a common but challenging aspect of human experience. In this course, students will explore how to understand mental distress from within the framework of practical theology. Students will learn how to articulate a theology of mental distress as well as human flourishing and shalom, through a focus on mental health in general and particular experiences such as anxiety, depression and bipolar disorder. Students will gain an understanding of issues of stigma surrounding mental distress in society. Students will evaluate pastoral responses to mental distress, and will articulate an understanding of what a wise, compassionate, and informed pastoral response might involve within the varied cultural contexts of Aotearoa New Zealand and beyond.

R406.830 EMBODIED EXISTENCE: THEOLOGY AND PRACTICE

Embodiment is an essential element of what it means to be human and part of God's good intention for flourishing human life. However, the body is a battleground in modern culture, and the lived experience of embodiment is often fraught for many Christians. This course will explore the place of the body in theological anthropology, the biblical story, and culture. From this will emerge implications for praxis in the complex cultural landscapes that exist within Aotearoa New Zealand and beyond, including body diversity, disability, ethics, discipleship, and spiritual practices.

R500's - Pastoral and Contextual Studies

R505.830 STUDIES IN PUBLIC AND CONTEXTUAL THEOLOGY

This course critically examines the origin, nature and methods of both public theology and contextual theology and their relationship to the wider Christian theological tradition. It assesses their application to public issues and contextual matters facing individuals and communities today across the cultural landscape of Aotearoa New Zealand and beyond.

R506.830 RESTORATIVE JUSTICE

There have always been debates about the definition, meaning and requirements of justice. In recent times, these debates have become even more fractious and complicated, with some thinkers simply concluding that, "nobody knows what justice is". Christians have something important to contribute to this discussion, for the biblical tradition reflects deeply and pervasively on the character of justice, and particularly on the restoring justice of God. This course will explore key themes in biblical teaching on justice, human rights and peacemaking, and reflect on their concrete application both in society and the church to the complex cultural landscapes that exist within Aotearoa New Zealand and beyond, and especially through the use of restorative justice principles and practices.

R507.830 ANOINTED MINISTRY

Run as a seminar, this course examines the doctrine of the Trinity and applies this to pastoral leadership practices in order to allow this doctrine to have a controlling influence over such practices. By grounding the course in a robust trinitarianism, students will receive a clear biblical and theological foundation for ministry as participation in the ongoing ministry of Christ in the world in the power of the Spirit, thus preparing them for effective Christocentric pastoral and missional leadership within the complex cultural landscapes that exist within Aotearoa New Zealand and beyond. The course develops historical, theological, and ministerial themes, and seeks to enable students to develop convictions for ministry and reflect on ecclesial practices such as administration of the sacraments, pastoral care, preaching, prayer, and worship. The methodology of Third Article Theology is applied to pastoral leadership and ministry practices.

R508.830 REFLECTIVE PRACTICE FOR MINISTRY

This course explores the postures and practices that allow people in ministry to flourish in their ministry context. Students will learn to critically evaluate their ministry environment both culturally and contextually, to develop practices of discernment and habits of mind that produce resilience over the long-term, and to understand what they bring to their ministry role from their own personality, context and as a participant in community.

R510.830 ADVANCED PREACHING

This course extends students' preaching ability by equipping them to proclaim Scripture effectively in a range of contexts to people of diverse ages and stages of life and faith. A variety of preaching forms will be examined and students will explore how these can be contextualised both to the medium in which their preaching takes place (digital, in person, hybrid) and to the cultural and situational context of their unique audience.

R512.830 FOUNDATIONS OF MINISTRY SUPERVISION

This is the first of two courses which together comprise a Postgraduate Certificate in Theology, designed to equip graduates to offer professional supervision in a range of ministry contexts (understanding ministry in the broad sense of Christian vocation). It examines the nature and purpose of professional supervision, including its importance in people-related ministries. Several theoretical approaches to supervision will be evaluated and participants will reflect critically on theological, ethical, and cultural dimensions of offering supervision in their own contexts.

A minimum of two years of ministry or professional experience is normally required for entry.

R513.830 DEVELOPING A MINISTRY SUPERVISION PRACTICE

This is the second of two courses which comprise a Postgraduate Certificate in Theology, designed to equip graduates to offer professional supervision in a range of ministry contexts (understanding ministry in the broad sense of Christian vocation). Through the integration of theory, practice, and theology, it enables practitioners to develop a framework for supervision appropriate to their own cultural and professional contexts, and to engage in critically reflective practice.

R525.830 SPECIAL TOPIC: PRACTICAL THEOLOGY

This course provides an opportunity for students to engage in pastoral, practical, or missional disciplines in an advanced way. The course involves a concentrated study of a pastoral, practical, or missiological theme or issue. Critical issues of background and context are explored, and contemporary applications to the complex cultural landscapes that exist within Aotearoa New Zealand and beyond are investigated.

R540.830 FOUNDATIONS IN VOCATIONAL THEOLOGY

Calling or *vocatio* is deeply rooted within the Christian tradition as a way of framing the good or faithful life. This course invites students to discern and articulate their vocation, and to frame this within a distinctively Christian theological articulation of hope. Students will engage with integrative theological frameworks, approaches, and their vocational practices in relation to God and the world, to address key questions pertinent to their own vocation, and so to faithfully enhance their own professional well-being and engagement within their own cultural and situational contexts.

R600's Cross-Cultural Mission

R609.830 THE MISSION OF THE CHURCH IN THE 21ST CENTURY

A theological exploration of best mission practice analysed through studying scripture, church tradition, contemporary culture, and practical experience. The relationship between missiology and cognate areas with contemporary cultural contexts in Aotearoa and beyond is explored to contribute to a renewed missional understanding.

R612.830 THE CHURCH FOR OTHERS

The church's social advocacy is increasingly recognised as a central aspect of her witness in the world. And yet, a call to social action can often be cast aside or seen as just one priority amongst many. This course presents biblical, theological, and historical investigations into the self-emptying existence for others which rests at the heart of Christian existence. Beginning with the biblical witness regarding the community's posture towards the vulnerable, the course then uses Dietrich Bonhoeffer's theological work to guide our discourse. We will hear Bonhoeffer ask, "Is the church the church if she does not exist for others?" and consider the significance of moving social action from the register of mission (something the church does) into the register of being (something the church is). The course will conclude by investigating historical case studies, illuminating how social action for the other historically and consistently emerges when the church lives from her faithful identity in Christ, and how it can be applied in the varied cultural contexts that exist in Aotearoa New Zealand and beyond.

R800's - Education

R801.830 THEOLOGICAL FOUNDATIONS FOR EDUCATION IN AOTEAROA

In this course students will engage in biblical theology and make links to the cultural landscapes in the educational context of Aotearoa. The course will provide an opportunity to engage in discussion around Christian theology and how it relates to the vocation of teaching, Christian education, and this current cultural moment. The cultural influences and formation of Christian teachers and their spirituality will also be a focus of the course.

R802.830 THEOLOGICAL RESPONSES TO ISSUES IN EDUCATION IN AOTEAROA

In this course students will engage with a selection of current issues and challenges experienced in educational contexts in Aotearoa. This course builds upon the Theological Foundations for Education in Aotearoa course, and pays close attention to the ways culture, context, and theology influences teaching in Aotearoa today.





**HENDERSON
& DISTANCE LEARNING**

P +64 9 836 7800
E henderson@laidlaw.ac.nz

3 Smythe Road, Henderson
Private Bag 93104, Henderson
Auckland 0650, New Zealand

CHRISTCHURCH

P +64 3 354 4270
E chch@laidlaw.ac.nz

70 Condell Avenue, Papanui
Christchurch 8053, New Zealand



www.laidlaw.ac.nz | info@laidlaw.ac.nz | 0800 999 777



**LIDLAW
COLLEGE**
TE WANANGA AMORANGI