

PROSPECTUS

LIDLAW
COLLEGE
TE WANANGA AMORANGI



uaha

ki me te
mau te
opa

WELCOME



OUR VISION TE WAWATA

A world shaped by love,
compelled and informed by
the Gospel.

OUR MISSION TE WHAKATAKANGA

To equip students and scholars
to renew their communities
with a faith as intelligent as it is
courageous.

Whakaaroaro tataotanga
Whakaaroaro whānui
Whakaaroaro āpōpō
Hai whakaponohia tōu oranga

Think deeply
Think widely
Think about the future
In order to live faithfully

Tēnā koe,

There are two questions that we ask of students
who are considering studying at Laidlaw:

How are you growing and deepening your faith to
follow Jesus through all of life?

Who are you called to be, and how do you need
to prepare yourself to fully answer this call?

Laidlaw College is an extraordinary community
of people, shaped by Scripture, and committed to
thinking deeply and well about the hope that we
have in Jesus. It is a privilege to lead and serve a
talented team who have spent their lives maturing
in wisdom so that they can share the fruit of their
study and practical experience with others.

We would love to talk with you about whether
Laidlaw College should be part of your answer to
those two questions, as we work to redeem the
world in service of our risen Lord.

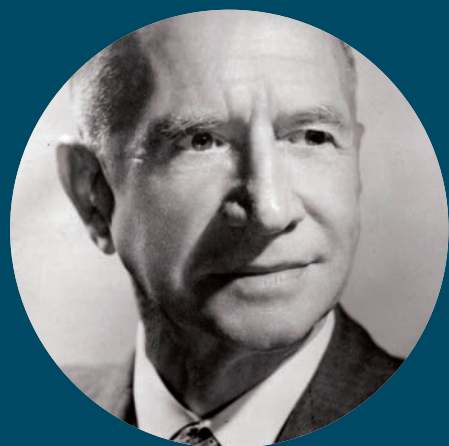
In His service,

Dr Roshan Allpress
National Principal/CEO



Thousands of women and men have contributed to the life and mission of this College through prayer, faithful service and generous giving.

Robert Laidlaw (1885–1971), one of our founders and President of the College for twenty years, is one of these people.



Robert A. Laidlaw

Robert Laidlaw was an outstanding businessman, philanthropist and influential Christian leader. Founder of the Farmers department stores, his faith underpinned his vocation in business. He had wide-ranging influence in churches and communities across Aotearoa New Zealand and around the world. His life story exemplifies what we hope for all our graduates: a deep commitment to the Gospel, an intelligent and integrated faith grounded in the Bible, and lifelong engagement with the task of renewing the world.

CONTENTS

The Story you're Joining	06
Study Pathways	08
What we Offer	11
Why Study at Laidlaw?	12
Laidlaw Community	15
Our Campuses	16
Study by Distance	17
What you can Study	18
Our Courses at Laidlaw	20
Study and Career Preparation	21
Theology Undergraduate	22
Theology Postgraduate	28
Education	30
Counselling	36
Scholarships and Funds	40
Application Process for Domestic Students	41
English Language Requirements	42
International Students	44
Application Process for International Students	46
Graduate Profile	49
Experience it for Yourself	50
Ready to Apply?	51

THE STORY YOU'RE JOINING

How do we live out the Gospel of Jesus in a world that is in need of the grace and truth of God?

As a Category 1 NZQA accredited tertiary educational institution, Laidlaw College is committed to the preparation of graduates who will faithfully serve their communities and courageously pursue the task of reimagining and renewing the world. Through biblical and theological study and professional training, we equip students to live with faith, hope, love and grace.

Students at Laidlaw are stepping into a long tradition. Founded in 1922 with just ten students, our mission has always been to train Christian leaders with a biblical imagination for Church and Society. Laidlaw graduates work in politics, social enterprise, social work, the Church, teaching, counselling, medicine, finance, agriculture, and every field imaginable. What sets them apart as leaders is that they know why they lead.

We are New Zealand's largest theological and interdenominational college. We serve churches across the denominational spectrum, united by our common hope in the Gospel of Jesus Christ.

Our range of qualifications includes entry-level Certificates and Diplomas, through to Bachelors and Masters, with key programmes in Theology, Ministry, Teacher Education and Counselling.

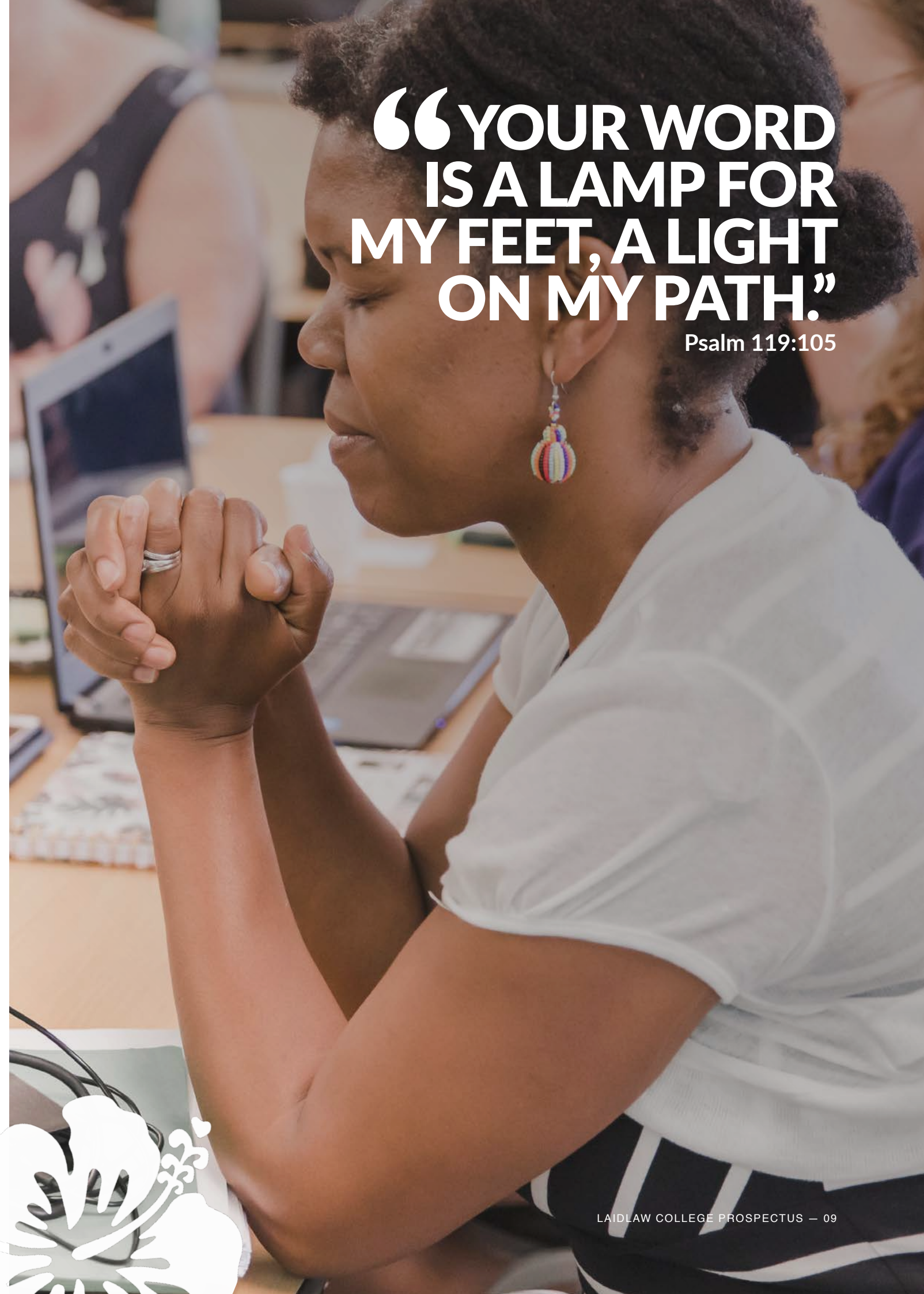
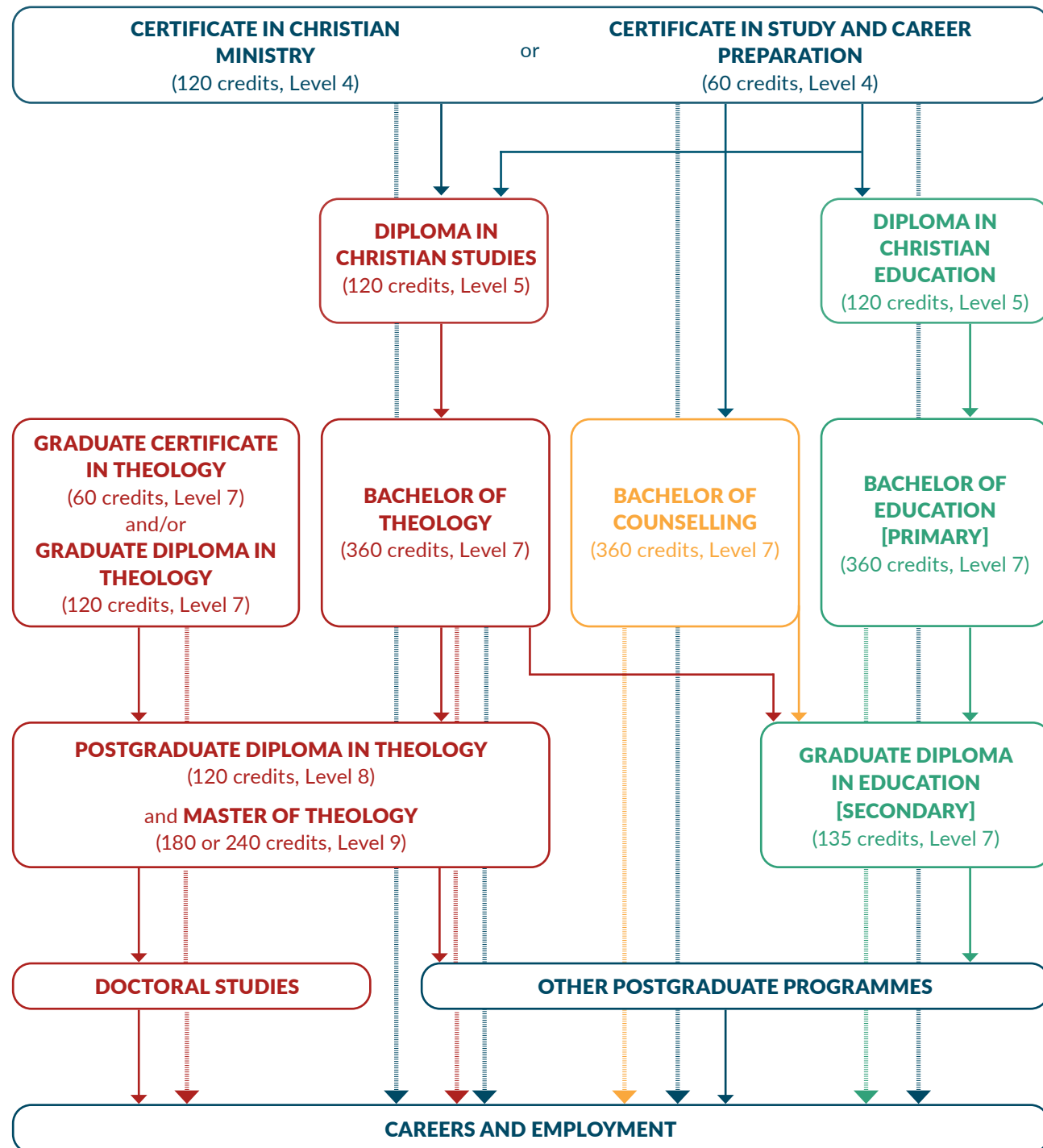
Students study full-time or part-time, at one of our campuses in Henderson, Manukau or Christchurch, through one of our partner colleges and churches, or via distance learning anywhere in the world.

Laidlaw's integrated approach to teaching facilitates deep and imaginative learning, and honours the distinctiveness of each student's voice. The College brings together men and women from many cultures, with experiences that are unique, and passions and gifts that are diverse, united by the hope that we have in Jesus.

Come join us.



STUDY PATHWAYS



“YOUR WORD IS A LAMP FOR MY FEET, A LIGHT ON MY PATH.”

Psalm 119:105



“THEN YOU WILL SHINE AMONG THEM LIKE STARS IN THE SKY AS YOU HOLD FIRMLY TO THE WORD OF LIFE.”

Philippians 2:15b-16a

WHAT WE OFFER

LEVELS	QUALIFICATION	DURATION†	CREDITS	INTAKES	PROGRAMME	LOCATION
Levels 4-5	Certificate in Study and Career Preparation*	Full-time for one semester	60	Feb & Jul		Manukau
	Certificate in Christian Ministry*	Full-time for one year	120	Feb	Theology	Partner Colleges
	Diploma in Christian Studies	Full-time for one year	120	Feb, Jul & Nov	Theology	Henderson Christchurch Manukau Distance Learning Partner Colleges
	Diploma in Christian Education	Full-time for one year	120	Feb & Jul	Education	Henderson Christchurch
Levels 6-7	Bachelor of Counselling	Full-time for three years	360	Feb & Jul (part-time only)	Counselling	Henderson Christchurch Manukau (some courses)
	Bachelor of Education (Primary)	Full-time for three years	360	Feb & Jul	Education	Henderson Christchurch
	Graduate Diploma in Education (Secondary)	Full-time for one year	120	Jan	Education	Henderson
	Bachelor of Theology	Full-time for three years	360	Feb, Jul & Nov	Theology	Henderson Christchurch Manukau (some courses) Distance Learning
	Graduate Certificate in Theology	Full-time for one semester	60	Feb, Jul & Nov	Theology	Henderson Christchurch Manukau (some courses) Distance Learning
	Graduate Diploma in Theology	Full-time for one year	120	Feb, Jul & Nov	Theology	Henderson Christchurch Manukau (some courses) Distance Learning
Levels 8-9	Postgraduate Diploma in Theology	Full-time for one year	120	Feb, Jul & Nov	Theology	Henderson
	Master of Theology	Full-time for 12-24 months	180 or 240	Feb, Jul & Nov	Theology	Henderson

* Not available for International Students

† Part-time options available for most programmes

WHY STUDY AT LAIDLAW?



Committed to the Gospel

At the heart of the Christian faith is the person of Jesus Christ: God and man, creator and redeemer, crucified and resurrected, carpenter and King.

We at Laidlaw are committed to living out of the hope that we have in Jesus.

As revealed in the Bible, He is the fulfilment of God's unfolding work in history to redeem the world. He is the source of knowledge and meaning – the truest example of what it means to be human.

We are a College community that seeks to form students to be more like Jesus: in wisdom, character and in working to see redemption of the world.

Study at Laidlaw is therefore more than preparation for a job - it is an invitation to read the Bible more richly, to know God, to be transformed by the renewing of your mind, and to live a life of missional engagement.

World class teaching and research

As a university-level educational institution, we provide world-class education across our programmes.

We are the highest-ranked non-university research institution in New Zealand, and a leader in theological education in Australasia. Our teaching is informed by a vibrant research culture, including visiting scholars and practitioners from around the world.

Laidlaw graduates are highly sought after in their fields. Laidlaw qualifications are fully-accredited through NZQA and are internationally recognised.

“I love my study at Laidlaw. It enables me to **THINK DEEPLY ABOUT EVERYTHING ABOUT GOD, LIFE AND FAITH,**

and it allows me to do that in a community of believers, of lecturers who are passionate about Jesus, about the Bible, about the Church and about God's mission.”

Philip,
Postgraduate Student

Staff who live what they teach

At Laidlaw you will meet lecturers, tutors and others who have spent years gaining wisdom and experience in ministry, professional life, and in their own spiritual walks.

We are privileged to have a world-class teaching team who combine scholarly brilliance, many years of practical experience, and a deep and active personal faith.

Formation for lifelong leadership

Sustaining faithful leadership over the long term is no easy task.

Study is one way to ensure that you dig deep wells, so that your faith will last through the dry and dark times we all experience.

At Laidlaw, our programmes are designed to help you think through who you are. We train leaders who can articulate why they serve, and who have made the effort to integrate their faith into their work.

Whatever you are called to, spending time to deepen your knowledge of God is an investment that will bear fruit over many years, and into future generations.



Equipping leaders for all areas of society

Since 1922, Laidlaw has been about equipping leaders for Church and Society.

We offer practical and formational training for pastors and ministers, and prepare people for leadership in every sphere of society. We train teachers and counsellors, and equip others for a wide variety of work with people. Our Theology programmes are for those wanting to integrate their faith into their vocation, with many students studying part time while pursuing their careers.

We believe that God has called Christians to work for the renewal of their communities, cultures, economies and environments – to humbly pursue justice and mercy everywhere. Laidlaw College graduates have gone on to serve as school principals, Members of Parliament, family counsellors, agricultural entrepreneurs, humanitarian aid workers, conservationists, social workers, university lecturers, pastors, ministry workers and in countless other roles.

We would love to help equip you to lead.



“Laidlaw is equipping me to take my faith into the day ahead of me and to

DRAW FROM THESE RICH SOURCES THAT ARE BEING INPUT INTO ME.”

Miriam,
Postgraduate Student



LIDLAW COMMUNITY



We are a diverse community

Laidlaw is an interdenominational College with lecturers and students from many churches, united by their faith in Christ. We hold strongly to our evangelical faith and encourage students to explore the richness of their own and other denominational traditions in the light of Scripture and the ongoing work of the Spirit in the world.

We have a long tradition of bicultural engagement, and are committed to this ongoing journey. This includes our commitment to the Treaty of Waitangi, and to developing Māori leaders and indigenous theology.

We are a multicultural community, with staff and students from many cultures and across generations, inspired by the vision of the new creation in which every nation and language declares the glory of God and kingship of Jesus.

We are a supportive community

We are committed to supporting the success of students with disabilities and other barriers to tertiary study. Every student at Laidlaw has access to personalised learning support from our dedicated team of specialists.

We value community

Whether you are on campus or study with us via distance learning, we love the opportunity to gather together for special occasions, to worship, to share a meal together, to learn and reflect, and to have fun both in person and online. We invite you to participate in what is more than just an educational programme, but a vibrant community where you can develop relationships with other students and staff. You can also connect with us through Facebook and Instagram.



OUR CAMPUSES

Laidlaw College has campuses in Henderson and Manukau (Auckland), and a campus in Papanui (Christchurch). Our campuses are configured for intercampus video teaching, and together with distance learning options, students can flexibly structure their study to meet their needs. Many students pick what is right for them, choosing a combination of on-campus and distance courses to complete their programme of study.

Laidlaw also partners with a number of other training providers around the country. Please see www.laidlaw.ac.nz for further study options.



Henderson

Our Henderson Campus is situated in West Auckland with the Waitākere Ranges and west coast beaches close by. Students enjoy vibrant community life supported by purpose-built facilities, some student accommodation, well-equipped lecture rooms, an extensive and well-resourced library and a lively café.



Manukau

Our Manukau Campus is conveniently located in the heart of the Manukau CBD in South Auckland. Located close to public transport, this vibrant, high quality, intercultural campus has lots of character and great spaces for community life.



Christchurch

Our Christchurch Campus sits in the north western suburb of Papanui, in a custom-designed building that celebrates learning, community and creativity. The smaller campus and class sizes make study at this campus relationally rich, supported by a great library and a comfortable lounge where students and staff can take a break or work together in small groups.



STUDY BY DISTANCE

Laidlaw Theology students have the option to study completely by distance in most of our undergraduate Theology programmes – from diploma through to degree. Our distance students are supported by a dedicated team of tutors and support staff, as well as opportunities for interaction with other students.

Many of our students choose to complement their campus based programmes with distance courses. By choosing this flexible mode of study you can decide where and when to study and fit it around your on-campus courses and other commitments. Other flexible study options include block courses, evening courses, internship training, summer semester distance courses, and part-time study.



WHAT YOU CAN STUDY

Bible and Theology

Studying theology is about seeking wisdom to live faithfully in the world. Theological study at Laidlaw builds on our strengths in biblical study, systematic theology and formation, and is ideal for those who are seeking to deepen and integrate their faith into every area of life, as well as those preparing for professional Christian ministry.

Mission and Ministry

Laidlaw College was founded on the idea of Christian mission, and continues to focus on the clear, compelling, and faithful communication of the Good News of Jesus Christ for the world. Modern mission studies now incorporate intercultural studies and missional theology, preparing and equipping students for this third millennium.

Education

Our teacher education programmes provide fully-accredited preparation for teaching in primary, intermediate and secondary schools. Uniquely in New Zealand, our courses are taught by experienced teacher-educators and by theologians, who will help you ground your professional practice in the Gospel of faith, hope and love, and to engage with children and youth as people made in the image of God.

Christian Leadership

Our Christian leadership programmes are designed to combine practical experience in mission and ministry with theological study and formation. Students are mentored by established leaders, and serve in church or ministry contexts, while studying in preparation for lifelong leadership in church, cross-cultural mission, or communities.

Counselling

Our counselling programme prepares students to serve others through healing hearts, minds and relationships. Christian thought and practice is integrated throughout the programme, with a uniquely immersive mix of classroom, practicum, group and mentored learning. This qualification is for those who want to build a career in counselling, or those who want to develop lifelong skills for working with people.



“STUDYING AT LAIDLAW, WHILE PRACTISING AS A PASTOR, HAS HELPED EXPAND MY THINKING AND THEOLOGY AROUND CHRISTIAN LEADERSHIP.”

I appreciate how Laidlaw seeks to help students contextually apply their learning. For me this learning edge has continued through my involvement with Engage: Laidlaw Centre for Church Leadership and through our church benefitting from Laidlaw’s ministry internship programme.”

**Mike Yates
Pastor, Shore Grace Church
and Director of Ministerial
Development, Wesleyan
Methodist Church of NZ**



OUR COURSES AT LAIDLAW

Our programmes aim to give students a deeper appreciation of the Gospel and Scripture and to learn to think and act imaginatively, critically, faithfully and practically in the everyday world. Our students will continue to be formed in their Christian faith, and be able to connect their faith to their own lives and the lives of those around them.

Whether you embark on a journey through Theology, Counselling or Education you will be shaped, challenged and changed as you take faith in action to the next level.

ARE YOU INTERESTED IN TERTIARY STUDY BUT DON'T FEEL QUITE READY?

CERTIFICATE IN STUDY AND CAREER PREPARATION (CertPrep)*



The Certificate in Study and Career Preparation assists students with the development of key skills, capabilities, knowledge and attributes needed to succeed in tertiary education including degree level. The programme provides a foundation for students who want to continue into Laidlaw programmes in Theology, Education or Counselling through a mixture of academic skills development and reflection on Christian faith and life. The programme focuses on the following key areas: academic readiness, managing your learning, literacy and communication skills.

* Not available for International Students

Admission Requirements

General Admission Requirements

- No secondary schooling or NCEA level 1 attainment or equivalent: Entry assessment required
- NCEA level 2 attainment, or equivalent: Open entry

NCEA Equivalence can include:

NZ School Certificate

Sixth Form Certificate

Overseas equivalent qualifications, including IB and CIE, or HSC (Australia)

Other NZQA level 1 or 2 certificates in relevant disciplines to Laidlaw programmes

Evidence of level of academic achievement or a portfolio of work for homeschooled students*

Reference/support/documentation from employer*

NB. All equivalences must be documented.

**The applicant may need to sit assessment for entry.*

Entry Assessment

- Includes a literacy test and an interview
- Dates for assessment will be advised

ICON KEY

00 LEVEL

00 CREDITS

00 NUMBER OF YEARS

 DISTANCE LEARNING

 ON CAMPUS

THEOLOGY UNDERGRADUATE

“LAIDLAW IS A PLACE WHERE YOU WILL BE FORMED. IT’S A PLACE WHERE YOU WILL BE CHALLENGED, AND IT’S A PLACE WHERE YOU WILL BE SET UP TO SUCCEED.”

Tekweni,
Postgraduate Student

Laidlaw's Theology programmes range from certificate to postgraduate level – rich in practical experience and in-depth knowledge designed to equip students with a faith as intelligent as it is courageous.

Career Opportunities

Church/Pastoral leadership Writing & Publishing
ASSOCIATE PASTOR Chaplaincy
Church-based ministries YOUTH WORK
Mission support work Para-church work
Intercultural ministry or mission
MINISTRY WITH SERVICE AGENCIES
Religious Education instruction
Community Development

Certificate in Christian Ministry
(CertCM)

Diploma in Christian Studies
(DipCS)

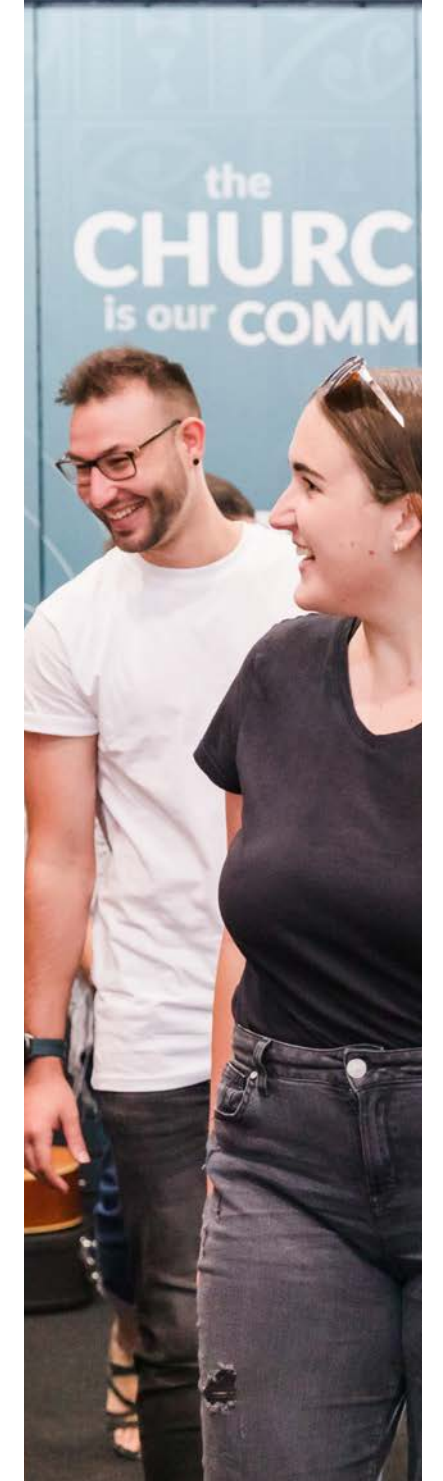
Bachelor of Theology
(BTheol)

Graduate Certificate in Theology
(GradCertTh)

Graduate Diploma in Theology
(GradDipTh)



LAIDLAW
THEOLOGY



CERTIFICATE IN CHRISTIAN MINISTRY (INTERNSHIP) (CertCM)[†]



The Certificate in Christian Ministry provides Christian churches and their agencies with people who can support and enhance their communities and ministries. Students in the CertCM (Internship) develop knowledge, skills and experience by connecting their own reflection on the Christian faith with real life practical contexts, equipping them for service in the Church and wider contexts. The CertCM (Internship) programme also provides a pathway into further study for personal and professional development.

This programme is available through our Partner Colleges by distance learning.

[†] *This programme requires a student to have an approved placement within a church or Christian organisation. Students are primarily responsible for finding their own placement.*

Admission Requirements

General Admission Requirements

- No secondary schooling or NCEA level 1 attainment or equivalent: Entry assessment required
- NCEA level 2 attainment, or equivalent: Open entry

NCEA Equivalence can include:

NZ School Certificate

Sixth Form Certificate

Overseas equivalent qualifications, including IB and CIE, or HSC (Australia)

Other NZQA level 1 or 2 certificates in relevant disciplines to Laidlaw programmes

Evidence of level of academic achievement or a portfolio of work for homeschooled students*

Reference/support/documentation from employer*

NB. All equivalences must be documented.

**The applicant may need to sit assessment for entry.*

Entry Assessment

- May include a literacy test
- Dates for assessment will be advised

Police Clearance

It is a condition of enrolment in the CertCM (Internship) that students complete a Police Vetting Service Request and Consent form as part of their application.

DIPLOMA IN CHRISTIAN STUDIES (DipCS)



The Diploma in Christian Studies provides students with an introduction to biblical studies, theological studies and spiritual formation and prepares them to live out the Gospel of Christ, engaging thoughtfully and compassionately in the world. It can be taken with tracks in **Theological Studies** or **Christian Leadership**[†].

The Christian Leadership track[†] equips people to evaluate and deliver ministry programmes within their context, to think deeply about their faith, and to lead a wide range of Christian operations. Students are equipped with a biblical and theological foundation upon which applied Christian leadership skills are developed through internship in real life practical contexts. For further information regarding DipCS tracks please see the Laidlaw College website.

Students who complete the DipCS may staircase into the second year of the Bachelor of Theology degree. If this is envisaged then particular consideration must be given to the track chosen so as to achieve an appropriate foundation for the desired degree.

[†] *This programme requires a student to have an approved placement within a church or Christian organisation. Students are primarily responsible for finding their own placement.*

Admission Requirements

General Admission Requirements

- NCEA Level 3
- Three subjects at Level 3, made up of 14 credits each, in **three approved subjects** (unless University Entrance was gained in 2020 when only 12 credits each in three approved subjects applies)
- Literacy: **10 credits at Level 2 or above**, made up of:
 - > 5 credits in reading
 - > 5 credits in writing
- Numeracy: **10 credits at Level 1 or above**, made up of:
 - > Achievement standards – specified achievement standards available through a range of subjects, or
 - > Unit standards – package of three numeracy unit standards (26623, 26626, 26627 – **all three required**)

Entry Assessment

For applicants who do not meet the above requirements, an Entry Assessment may be required.

- Includes a literacy test
- Dates for assessment will be advised

Special Admission

Possible study options can arise depending on the assessment result:

- An offer of entry to the Certificate in Study and Career Preparation
- An offer of entry to the Diploma in Christian Studies if the BTheol was applied for
- Entry to the BTheol (if appropriate).

NCEA Equivalence can include:

University Entrance, A or B Bursary.

Overseas equivalent qualifications, including IB and CIE, or HSC (Australia).

Other NZQA Level 3 certificates in similar disciplines to Laidlaw programmes.

Other NZQA level 4 certificates in a different discipline.

Evidence of level of academic achievement or a portfolio of work for homeschooled students*

Reference/support/documentation from employer*

NB. All equivalences must be documented.

**The applicant may need to sit assessment for entry.*

Police Clearance

For those including internship as part of their programme, it is a condition that applicants complete a Police Vetting Service Request and Consent form as part of the application.

Please see the Laidlaw College website for full admissions requirements including transitioning from the DipCS to the BTheol: www.laidlaw.ac.nz/admission-requirements

BACHELOR OF THEOLOGY (BTheol)



The Bachelor of Theology is designed to provide students with a solid foundation in biblical studies, theological knowledge and reflection. It provides an in-depth engagement with Scripture, Christian thought and history and equips students with the skills they need for pastoral and missional leadership, as well as other ministries. It is also strongly recommended for those seeking theological grounding for higher academic qualifications in biblical and theological studies.

Admission Requirements

General Admission Requirements

- NCEA Level 3
- Three subjects at Level 3, made up of 14 credits each, in **three approved subjects** (unless University Entrance was gained in 2020 when only 12 credits each in three approved subjects applies)
- Literacy: **10 credits at Level 2 or above**, made up of:
 - > 5 credits in reading
 - > 5 credits in writing
- Numeracy: **10 credits at Level 1 or above**, made up of:
 - > Achievement standards – specified achievement standards available through a range of subjects, or
 - > Unit standards – package of three numeracy unit standards (26623, 26626, 26627 – all three required)

NCEA Equivalence can include:

University Entrance, A or B Bursary.

Overseas equivalent qualifications, including IB and CIE, or HSC (Australia).

Other NZQA Level 3 certificates in similar disciplines to Laidlaw programmes.

Other NZQA level 4 certificates in a different discipline.

Evidence of level of academic achievement or a portfolio of work for homeschooled students*

Reference/support/documentation from employer*

NB. All equivalences must be documented.

**The applicant may need to sit assessment for entry.*

Entry Assessment

For applicants who do not meet the above requirements, an Entry Assessment may be required.

- Includes a literacy test
- Dates for assessment will be advised

Special Admission

Possible study options can arise depending on the assessment result:

- An offer of entry to the Certificate in Study and Career Preparation
- An offer of entry to the Diploma in Christian Studies if the BTheol was applied for
- Entry to the BTheol (if appropriate)

Police Clearance

For those including internship as part of their programme, it is a condition that applicants complete a Police Vetting Service Request and Consent form as part of the application.

Please see the Laidlaw College website for full admissions requirements including transitioning from the DipCS to the BTheol: www.laidlaw.ac.nz/admission-requirements

GRADUATE CERTIFICATE IN THEOLOGY (GradCertTh)



GRADUATE DIPLOMA IN THEOLOGY (GradDipTh)



The Graduate Certificate in Theology and Graduate Diploma in Theology are designed for those who already have an undergraduate qualification and brings vocational expertise and life experience into dialogue with critical reflection on the Christian faith. Students studying in these programmes will deepen their theological understanding and discover connections between theology and the wider world, the Church and missions contexts. Completion of the GradDipTh provides a potential springboard into postgraduate study. Graduates from these programmes have returned to their vocations, engaged in missions or community development work in local and global contexts, trained as teachers or moved into church leadership.

Admission Requirements

General Admission Requirements

The normal requirement for admission into the GradCertTh and GradDipTh programmes is a completed undergraduate degree, or higher qualification, as defined in the National Qualifications Framework of the NZQA.

Special Admission

Serious consideration will be given to those who have a combination of relevant experience and non-degree qualifications. This is particularly relevant for those whose qualifications are at a level that, in the current New Zealand environment, is likely to be regarded as having been gained at degree level. Each application will, however, be considered in light of the applicant's overall background and ability to benefit from the programme. The onus is on the applicant to provide details of all qualifications and experience relevant to the application procedure.

“FAITH SEEKING UNDERSTANDING
WHAKAPONO KIMI MĀRAMATANGA”

St Anselm

THEOLOGY POSTGRADUATE

“STUDYING
THEOLOGY AT LAIDLAW
HAS LED ME TO A DEEP
ENCOUNTER AND
EXPERIENCE OF GOD,

and has helped prepare me for God’s service in church ministry. Laidlaw offers me a very supportive and intellectually stimulating environment. I also love the rich multicultural atmosphere here.”

Yukiko,
Postgraduate Student



We seek to nurture and train emerging scholars through world-class postgraduate programmes and the building of a supportive academic community in which students and established scholars work closely together, each gaining from the engagement of ideas.

POSTGRADUATE DIPLOMA IN THEOLOGY (PGDipTh)



The Postgraduate Diploma in Theology programme provides an advanced level theological qualification for those who have already completed a recognised Bachelor’s level or a Graduate Diploma qualification in theology. The PGDipTh programme consists of taught courses. Also, students who successfully complete taught courses in the MTh programme amounting to at least 120 credits, but who do not complete a research project, will be awarded the PGDipTh.

MASTER OF THEOLOGY (MTh)



The Master of Theology is a two-year (full-time equivalent) 180 or 240 credit degree. It provides an advanced level theological qualification for those who have already completed a recognised Bachelor’s level degree in theology and want to upgrade their qualification in a specific area or extend their understanding of Christian ministries. The degree provides opportunity for Master’s level biblical and theological study related to the fields of Biblical Studies, Christian Thought and History and Pastoral, Missional and Contextual Studies, and for students to pursue a research project in an area of interest.

Advanced Research Degrees and Doctoral Programmes

Under a memorandum of agreement with Auckland University of Technology (AUT), Laidlaw candidates may apply to enrol in the AUT Master of Philosophy or Doctor of Philosophy programmes and to undertake research in theology under the supervision or co-supervision of Laidlaw faculty. Students may also apply to enrol in the Otago PhD with an endorsement from Laidlaw. As an affiliated institution of the Australian College of Theology (ACT), Laidlaw offers a number of ACT postgraduate programmes.

Students interested in these options should contact laidlawgraduateschool@laidlaw.ac.nz.

Admission Requirements

General Admission Requirements

The normal requirement for admission into the PGDipTh and MTh programmes is a completed undergraduate degree, or higher qualification, as defined in the National Qualifications Framework of the NZQA, in an appropriate discipline. The following options are available:

- Completed Bachelor’s qualification in theology or Christian ministry OR
- Applicants who hold a recognised Bachelor’s level degree in a discipline other than theology may be accepted for study towards the PGDipTh or MTh following successful completion of a bridging programme of theological study, such as those provided by Laidlaw or as approved by the Postgraduate Committee. Bridging requirements may be satisfied wholly or partly by credit transfer and/or recognition of prior learning.

A grade average of 7.0 (B) or higher in papers of the qualifying undergraduate programme equivalent to NZQA levels 6 and 7 is required.

Special Admission

Serious consideration will be given to those who hold qualifications of an equivalent standard. In exceptional circumstances the Postgraduate Committee may allow applicants who do not meet these requirements, or who do not have qualifications of an equivalent standard, to be granted provisional candidature into the PGDipTh. Candidature in the MTh shall be confirmed after the satisfactory completion of the PGDipTh.

Each application will, however, be considered in light of the applicant’s overall background and ability to benefit from the programme. The onus is on the applicant to provide details of all qualifications and experience relevant to the application procedure.

EDUCATION

“THE MANAAKI
HERE IS AMAZING.
THE SENSE OF
WHANAUNGATANGA
THAT YOU FEEL
WHEN YOU WALK
THROUGH THE
DOORS IS AMAZING.

I also like that they put on
free feeds. That's a must.”

Ian,
Bachelor of Education Student

Laidlaw's Education programmes prepare teachers to integrate their faith and calling in classrooms across Aotearoa New Zealand.

With programmes that integrate theology and innovative teaching practice, and a relational and supportive learning community, we welcome those with a calling to work with the next generation.

Career Opportunities

Primary School Teacher Early Childhood Teacher
Middle School Teacher Children's ministry workers
SECONDARY SCHOOL TEACHER Tutors
COMMUNITY EDUCATION TEACHER AIDE
Home educators

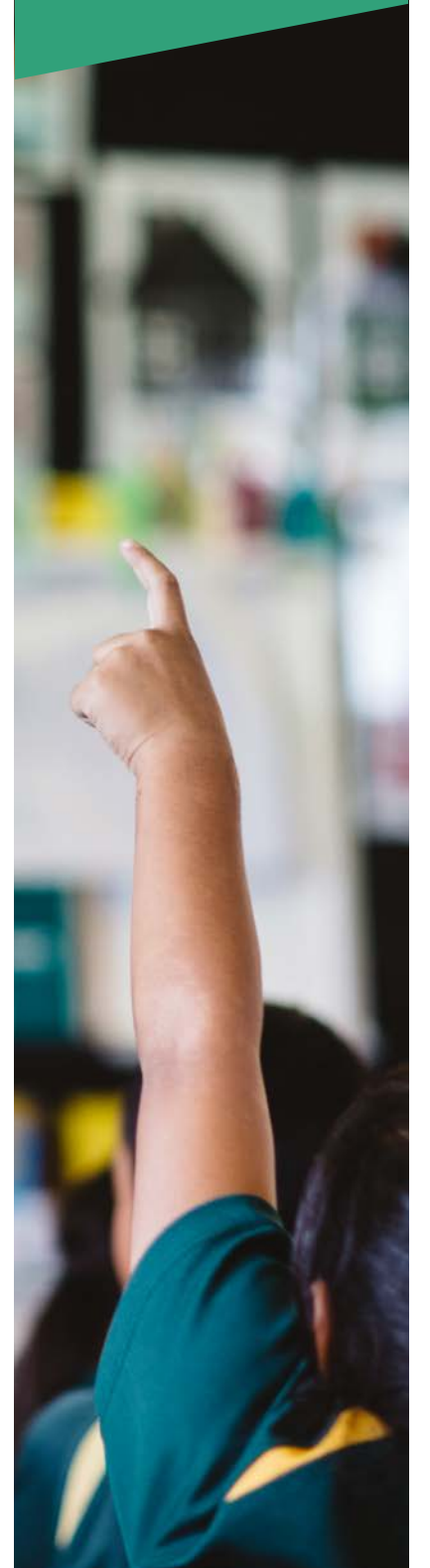
Diploma in Christian Education
(DipCEd)

Bachelor of Education - Primary
(BEd)

Graduate Diploma in Education -
Secondary (GradDipEd)



LAILAW
EDUCATION



DIPLOMA IN CHRISTIAN EDUCATION (DipCEd)



The Diploma in Christian Education is ideal for children's ministry workers and volunteers, people involved in home schooling or community education programmes, or those considering work in an educational profession, for example teacher aiding, student support or tutoring.

If you have an interest in how your faith and educational practice might come together to strengthen your work with children in your community, this programme will help you work in a range of social and cultural contexts.

Students who complete the DipCEd may staircase into the second year of the Bachelor of Education.

BACHELOR OF EDUCATION – PRIMARY (BEd)



The Bachelor of Education (Primary) is a Teaching Council approved three year professional degree preparing students for primary teaching in New Zealand. Graduates are eligible for registration and can be found in primary, intermediate, state, integrated and private schools throughout New Zealand and around the world.

The degree combines theory and practice, in dynamic, interactive on-campus learning environments and over 22 weeks of school-based practice. Students think vocationally about teaching and have opportunities to reflect theologically on their practice throughout the degree.



Admission Requirements

General Admission Requirements

DipCEd and BEd applicants

Entry to the Laidlaw College Bachelor of Education (Primary) and the Diploma in Christian Education is New Zealand University Entrance or a recognised equivalent (i.e. International Baccalaureate or Cambridge International) or be able to demonstrate to the satisfaction of Laidlaw College that they have the skills and ability to study at a tertiary level.

Students under the age of 20 applying to the BEd without UE must be able to demonstrate to the satisfaction of Laidlaw College that they have the ability to study at a tertiary level.

Students 20 years or older must meet literacy and numeracy requirements comparable to those entering with UE. This will usually be assessed by the entrance literacy and numeracy testing.

- NCEA Level 3
- Three subjects at Level 3, made up of 14 credits each, in **three approved subjects** (unless University Entrance was gained in 2020 when only 12 credits each in three approved subjects applies)
- Literacy: **10 credits at Level 2 or above**, made up of:
 - > 5 credits in reading
 - > 5 credits in writing
- Numeracy: **10 credits at Level 1 or above**, made up of:
 - > Achievement standards – specified achievement standards available through a range of subjects, or
 - > Unit standards – package of three numeracy unit standards (26623, 26626, 26627 – all three required).

UE Equivalence can include:

University Entrance, A or B Bursary

Overseas equivalent qualifications, including IB and CIE, or HSC (Australia)

Other NZQA Level 3 certificates in similar disciplines to Laidlaw programmes

Other NZQA Level 4 certificates in a different discipline.

Evidence of level of academic achievement or a portfolio of work for homeschooled students

Reference/support/documentation from employer

Portfolio of work evidencing contribution to a relevant field

NB. All equivalences must be documented.

Entrance Test Requirements

DipCEd and BEd applicants

All applicants are required to have a selection interview and sit an entrance exam that focuses on literacy and numeracy skills.

BEd applicants

Candidates must score step 4 in literacy (reading and writing) and step 5 in numeracy for full entry into the course.

Special Admission Requirements

For applicants who do not meet the requirements, possible study options can arise depending on the assessment and interview result:

DipCEd applicants

- An offer of entry to a level 4 programme
- An offer of entry into an alternative level 5 programme

BEd applicants

- An offer of entry to a level 4 programme
- An offer of entry to the Diploma in Christian Education

Professional References

DipCEd and BEd applicants

Applicants are required to submit written references from two referees. Referees should not be a close friend or relation and should be able to answer questions about the applicant in a ministry and/or professional capacity.

Selection Interview

DipCEd and BEd applicants

All applicants who have successfully completed the first stage of the application process will be invited to attend an interview with a panel of selectors.

Police Clearance

DipCEd and BEd applicants

All applicants must complete a Police Vetting Service Request and Consent form as part of their application. All international applicants for the DipCEd and BEd must provide a police clearance certificate from their country of citizenship **AND** for any country in which they have lived for more than a 12 month period in the last 10 years. This overseas police clearance should be less than 6 months old and be presented at the time of application. This is to meet the requirements of the Vulnerable Children's Act 2014.

Charged with an offence

DipCEd and BEd applicants

Any Laidlaw College student teacher charged with an offence must disclose the charge in writing to the Head of Education within 3 working days.

Please see the Laidlaw College website for full admissions and English Language Test requirements:
www.laidlaw.ac.nz/admission-requirements

GRADUATE DIPLOMA IN EDUCATION – SECONDARY (GradDipEd)



The Graduate Diploma in Education (Secondary) is a one-year professional graduate diploma (level 7) and prepares graduates to meet the Code and Standards for the Teaching Profession. You will develop a robust understanding of secondary teaching and learning, reflection and research as a teacher. The delivery of the degree is site-based with modes: face to face delivery, blended learning, school-based learning and practicum. This qualification will suit people who are excited by the idea of working alongside teenaged students, who show a disposition to teach, and already have a Bachelor's degree qualification or higher.

Admission Requirements

General Admission Requirements

The normal requirement for admission requires applicants to show evidence they have:

- An appropriate bachelor's degree at Level 7 on the New Zealand Qualifications Framework and/or postgraduate qualification, **AND**
- A body of knowledge from Levels 5 to 7 or higher in support of New Zealand Curriculum learning areas for at least one Year 7-10 teaching subject/s and at least one Year 11-13 teaching subject/s, **OR**
- For language teaching: native or fluent reading, writing, speaking and listening in the language.

Entrance Test Requirements

All applicants are required to have a selection interview and sit an entrance exam that focuses on literacy and numeracy skills.

Candidates must score step 4 in literacy (reading and writing) and step 5 in numeracy for full entry into the course.

Professional References

Applicants are required to submit written references from two referees. Referees should not be a close friend or relation and should be able to answer questions about the applicant in a ministry and/or professional capacity.

Selection Interview

All applicants who have successfully completed the first stage of the application process will be invited to attend an interview with a panel of selectors.

Police Clearance

All applicants must complete a Police Vetting Service Request and Consent form as part of their application. All international applicants for the GradDipEd must provide a police clearance certificate from their country of citizenship **AND** for any country in which they have lived for more than a 12 month period in the last 10 years. This overseas police clearance should be less than 6 months old and be presented at the time of application. This is to meet the requirements of the Vulnerable Children Act 2014.

Charged with an offence

Any Laidlaw College student teacher charged with an offence must disclose the charge in writing to the Head of Education within 3 working days.

Please see the Laidlaw College website for full admissions and English Language Test requirements:

www.laidlaw.ac.nz/admission-requirements



The
BIBLE
is our
STORY

JESUS
is our **LORD**

The
CHURCH
is our **COMMUNITY**

RENEWAL is our
VOCATION

COUNSELLING

“The support that you get from your lecturers, staff and your peers is amazing, AND I ALSO LOVE IT BECAUSE LAIDLAW RECOGNISES THE UNIQUENESS AND DISTINCTIVENESS OF PASIFIKA VOICES THAT WE CONTRIBUTE TO THE COLLEGE.”

Molly,
Bachelor of Counselling Student

If you are called to serve others through healing hearts, minds and relationships, Laidlaw's Counselling Programme offers a uniquely integrated approach to counselling.

Career Opportunities

PERSONAL COUNSELLING Private practice
Schools Family and health support roles
Community development
Workplace assistance and chaplaincy
Christian pastoral work Church work
SOCIAL SERVICE AGENCIES
Innovative postgraduate research

Bachelor of Counselling (BCouns)

BACHELOR OF COUNSELLING (BCouns)



The Bachelor of Counselling is a three year degree designed for students who want to integrate Christian faith with a range of sound, well-established counselling theories and practical skills. This degree prepares you to become a registered counsellor with either the NZ Association of Counsellors or the NZ Christian Counsellors Association. It has a common core of biblical, theological and philosophical studies which provides a foundation for a deep appreciation of the Scriptures and the outworking of the Gospel in life and professional practice.

Much of the learning happens in personal counselling and in group process, in which all students participate each semester. It is in these groups that deep and enduring formation takes place. The BCouns is for those who want to build a career in counselling, or those who want to develop lifelong skills for working with people.



LAIDLAW
COUNSELLING



Admission Requirements

General Admission Requirements

- NCEA Level 3
- Three subjects at Level 3, made up of 14 credits each, in **three approved subjects** (unless University Entrance was gained in 2020 when only 12 credits each in three approved subjects applies)
- Literacy: **10 credits at Level 2 or above**, made up of:
 - > 5 credits in reading
 - > 5 credits in writing
- Numeracy: **10 credits at Level 1 or above**, made up of:
 - > Achievement standards – specified achievement standards available through a range of subjects, or
 - > Unit standards – package of three numeracy unit standards (26623, 26626, 26627 – **all three required**).

NCEA Equivalence can include:

University Entrance, A or B Bursary

Overseas equivalent qualifications, including IB and CIE, or HSC (Australia)

Other NZQA Level 3 certificates in similar disciplines to Laidlaw programmes

Other NZQA Level 4 certificates in a different discipline

Evidence of level of academic achievement or a portfolio of work for homeschooled students*

Reference/support/documentation from employer*

NB. All equivalences must be documented.

**The applicant may need to sit assessment for entry.*

Minimum Age

BCouns applicants

All BCouns applicants must be at least 20 years of age on or before the first day of semester in which the proposed programme of study is offered.

Entry Assessment

For applicants who do not meet the above requirements, an Entry Assessment may be required.

- Includes a literacy test.
- Dates for assessment will be advised.

Special Admission

Possible study options can arise depending on the assessment result:

- An offer of entry to a level 4 programme
- Entry to Bachelor of Counselling (if appropriate).

Professional References

Applicants are required to submit written references from two referees. Referees should not be a close friend or relation and should be able to answer questions about the applicant in a ministry and/or professional capacity.

Selection Interview

All applicants who have successfully completed the first stage of the application process will provisionally be accepted into the programme and invited to attend a group interview and, if required, a further interview by a panel of two selectors.

Police Clearance

It is a condition of enrolment that students complete a Police Vetting Service Request and Consent form as part of their application.

Please see the Laidlaw College website for full admissions requirements including requirements for transitioning into the second year of the BCouns:

www.laidlaw.ac.nz/admission-requirements

“THE COURSE WAS BRILLIANT, BUT THE MOST IMPACTFUL THING PERSONALLY WAS THAT THE PEOPLE AT LAIDLAW BELIEVED IN ME, AND SO I CAME TO BELIEVE IN MYSELF TOO.”

Letitia,
Bachelor of Counselling Graduate



SCHOLARSHIPS AND FUNDS

Laidlaw College provides access to a number of scholarships and funds for students studying in New Zealand. All are annual unless otherwise stated. Scholarship award decisions will be made on the basis of a completed application form by the Laidlaw College Senior Leadership Team or nominee. Scholarship applications for the following year must be received by the 1st day of December each year.

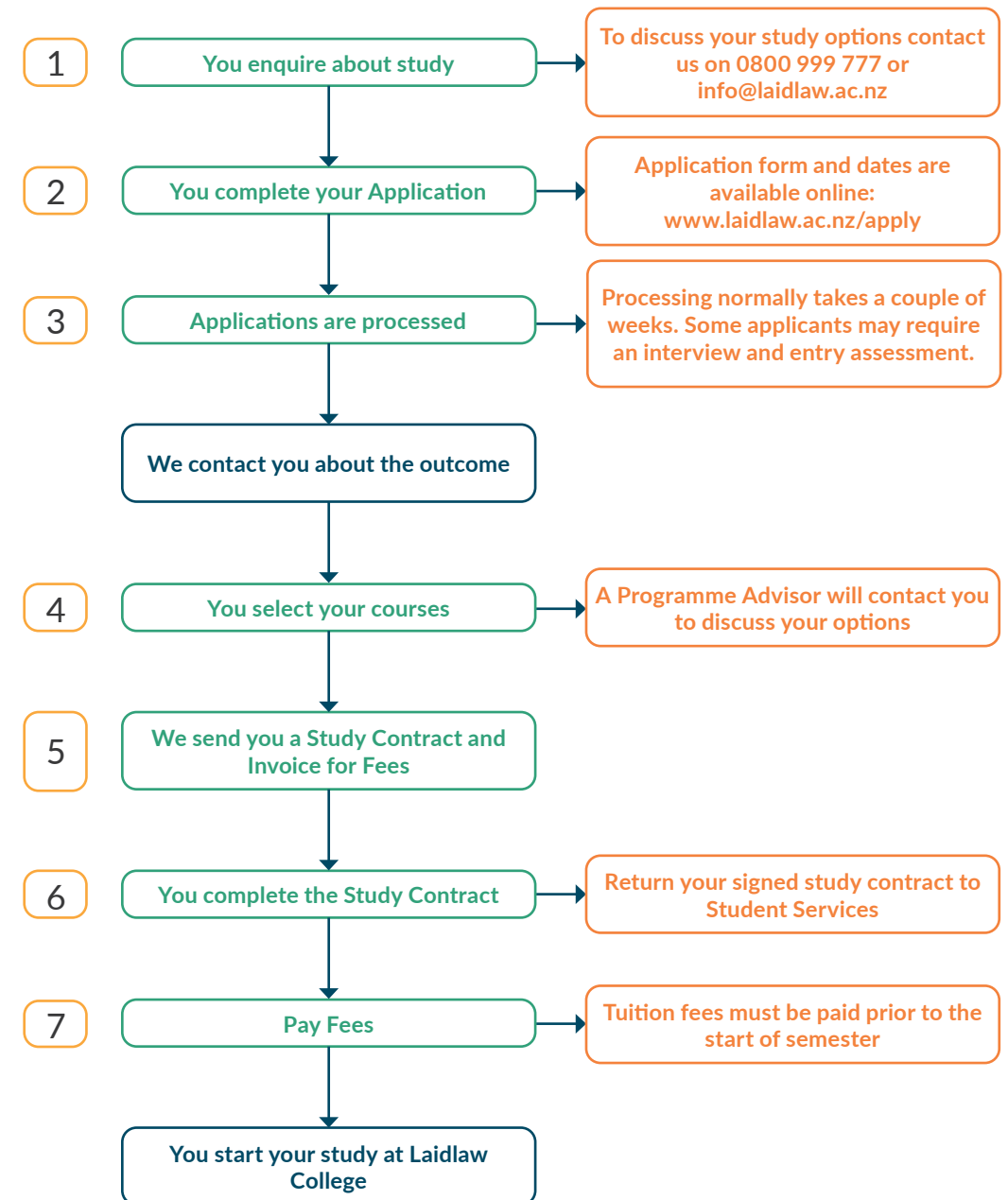
Completing an application does not guarantee you will receive a scholarship. Decisions regarding the awarding of scholarships are affected by available funds, quality of applications and number of applicants in a given year.

Please see the Laidlaw website for more details: www.laidlaw.ac.nz/scholarships



APPLICATION PROCESS

For Domestic Students



ENGLISH LANGUAGE REQUIREMENTS

Applicants must meet both the Academic and English language requirements for their programme. In addition to the requirements outlined, applicants for whom English is not their first language must use one of the following methods to demonstrate that they have the required level of English proficiency to study in New Zealand:

- Gained NCEA level 3 and met New Zealand University Entrance requirements; or
- Holds a Bachelor's degree of at least three years from New Zealand, Australia, Canada, the Republic of Ireland, South Africa, the United Kingdom or the United States of America; or
- Achieved a Certificate in English Language Teaching to Adults (CELTA); or
- Achieved the required score, as indicated in the following subsections, in one of the following internationally recognised English proficiency tests, within the preceding two years:
 - International English Language Testing System (IELTS)
 - University of Cambridge Certificate in Advanced English (CAE)
 - University of Cambridge Certificate of Proficiency in English (CPE)
 - University of Cambridge First Certificate in English (FCE)
 - International English for Speakers of Other Languages qualifications by City and Guilds (IESOL)
 - Pearson Test of English (Academic) (PToE)
 - New Zealand Certificate in English Language (NZCEL)
 - Testing of English as a Foreign Language (TOEFL)

A waiver for the English language test may be granted:

- If the applicant can provide clear evidence of completion of a tertiary qualification of at least three years' duration with English as the language of instruction in New Zealand, Australia, Canada, the Republic of Ireland, South Africa, the United Kingdom or the United States.
- For those who have studied in NZ for a minimum of two years at secondary school and gained either
 - eight NCEA level 2 University Entrance literacy credits (4 credits in reading and 4 credits in writing) gained prior to 2014 or
 - ten NCEA level 2 NCEA University Entrance Literacy credits (5 credits in reading and 5 credits in writing).
- For long-term residents (10+ years) in New Zealand, or another English speaking country, who are able to demonstrate English language competency appropriate to the desired level of study. Competency must be documented.

*Please note that these waiver requirements do not apply to the Bachelor of Education (Primary) and Graduate Diploma in Education (Secondary). Applicants should refer to the Laidlaw College website for details:
www.laidlaw.ac.nz/admission-requirements*

QUALIFICATION	ENGLISH LANGUAGE REQUIREMENTS (ACADEMIC)	
	IELTS	PEARSON TEST OF ENGLISH
Certificate in Study and Career Preparation	5.5 or higher with minimum 5.0 in reading and writing	42
Certificate in Christian Ministry	5.5 or higher with minimum 5.0 in reading and writing	42
Diploma in Christian Studies	6.0 or higher with minimum 6.0 in all bands	50
Diploma in Christian Education	6.0 or higher with minimum 6.0 in all bands	50
Bachelor of Theology	6.0 or higher with minimum 6.0 in all bands	50
Bachelor of Counselling	6.5 or higher with minimum 6.0 in all bands	58
Bachelor of Education (Primary) Graduate Diploma in Education	7.0 or higher with minimum 7.0 in all bands (conditions apply)	65
Graduate Certificate in Theology Graduate Diploma in Theology	6.5 or higher with minimum 6.0 in all bands	58
Postgraduate Diploma in Theology Master of Theology	7.0 or higher with minimum 7.0 in writing (conditions apply)	65

For other equivalent English Language Proficiency scores please refer to www.nzqa.govt.nz/about-us/our-role/legislation/nzqa-rules/nzqf-related-rules/the-table/



INTERNATIONAL STUDENTS

Currently we are unable to process International Student Applications unless you are already living in New Zealand. Please check <https://www.laidlaw.ac.nz/internationals/> for updates from August 2021.

How to Apply and Enrol

If you have decided on a programme of study and you are ready to apply, you can apply online at www.laidlaw.ac.nz/apply. The application fee is \$100.

The Application Process

The application process may take some time so it is essential that you make an early start.

When embarking on study abroad there are a number of factors that will support your application to Laidlaw and your time here in New Zealand:

- We like to know that you come with the full backing and support of your church, both in prayer and finances. It is a privilege for us to have a part in training people from around the globe, but it makes a significant difference to have this training recommended and supported by your church.
- It is also important that you have sufficient funds to cover all costs involved for the duration of your study. These include your airfare, insurances, tuition fees and accommodation costs for each year of your proposed programme. Obtaining part-time or holiday work is not guaranteed, so it pays to look at sourcing finances within your own country before arriving. In the process of obtaining a visa your financial position will be looked into.

Once you have found the programme you would like to apply for, take your time to answer all questions carefully and feel free to forward any queries to our Admissions Team (info@laidlaw.ac.nz).

When we have received your application and supporting documents, your application will be considered by the Admissions Team and you will be notified of the result by email. If successful, you will be given full details of fees payable, a medical insurance quote, an Offer of Place and programme details.

The Offer of Place and receipt of fees paid will form part of your visa application. You can apply online for a Student Visa/Permit on the Immigration NZ website: www.immigration.govt.nz.

Please note: Laidlaw College does not admit any international student under the age of 18.



English Language Proficiency

As all tuition is given in English, proficiency in understanding, reading, writing and speaking English is necessary. Applicants whose first language is not English are required to have an English Language Proficiency test score (academic version) appropriate to their programme of study (see table on page 43).

A waiver of English Language requirements may be granted by the Admissions Committee if:

- The applicant can provide clear evidence of completion of a tertiary qualification of at least three years' duration with English as the language of instruction in New Zealand, Australia, Canada, the Republic of Ireland, South Africa, the United Kingdom or the United States, **OR**
- The applicant is from countries with a student visa approval rate of at least 80 percent and can provide clear evidence of study at schools using English as the language of instruction and has either:
 - (a) completed all primary education and at least three years of secondary education (that is, the equivalent of New Zealand forms 3 to 7 or years 9 to 13), or
 - (b) completed at least five years of secondary education (that is, the equivalent of New Zealand Forms 3 to 7 or Years 9 to 13).

Fees

For information about fees, please see the full Fees Schedule online at www.laidlaw.ac.nz/fees.

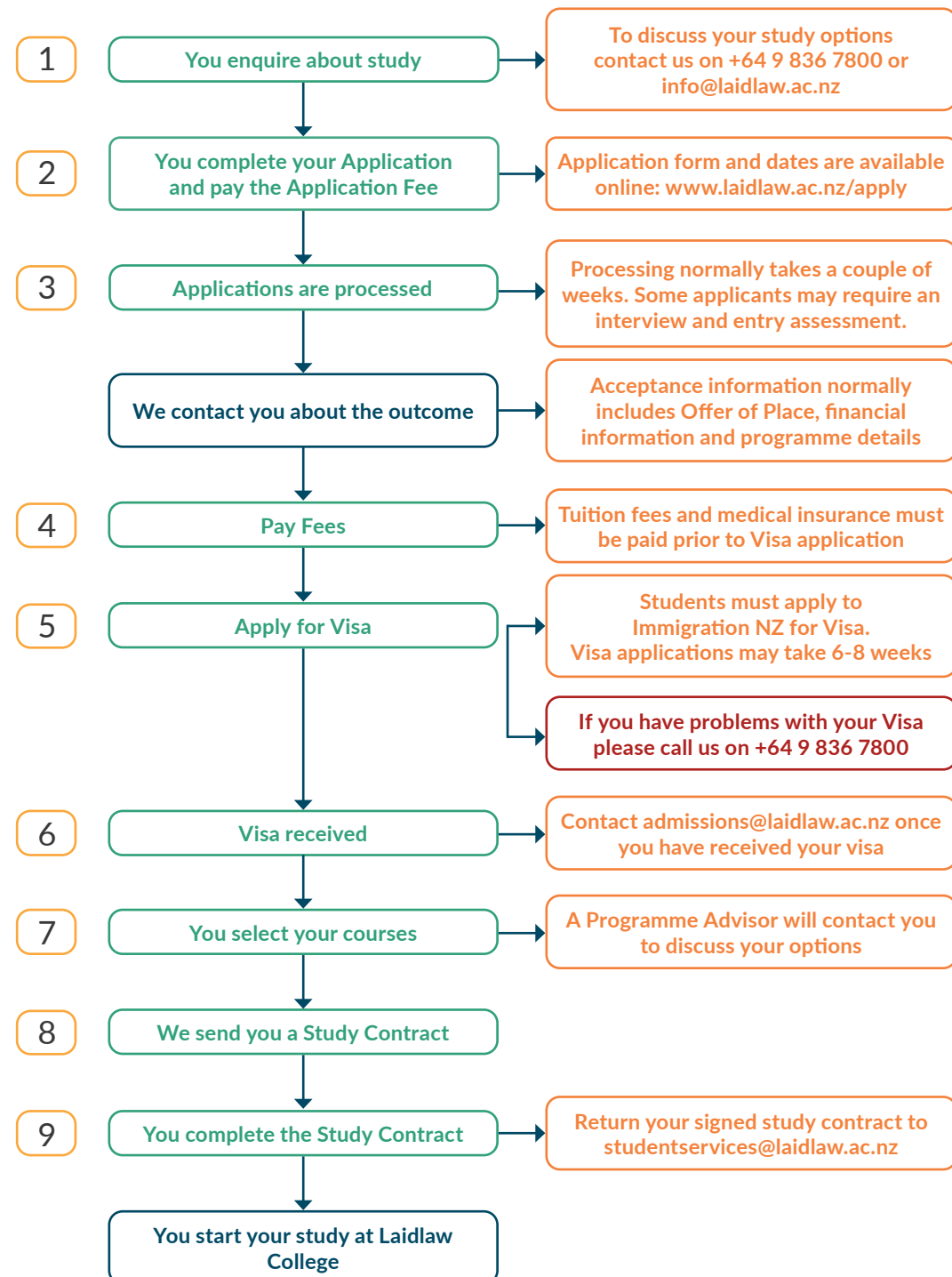
Contact Us

If you would like to talk to someone about study at Laidlaw, please call us on +64 9 836 7800 or email info@laidlaw.ac.nz. If you are in New Zealand you are welcome to visit us at one of our campuses in Auckland or Christchurch.

To find out more about enrolling as an international student check out our website: www.laidlaw.ac.nz/internationals

APPLICATION PROCESS

For International Students





GRADUATE PROFILE

Laidlaw's mission is to equip students and scholars to renew their communities with a faith as intelligent as it is courageous, in service to our vision of a world shaped by love compelled and informed by the Gospel. We strive towards this as imperfect people in need of grace, but convinced that through faith and hope our graduates can influence the Church and world through love. The graduate profile outlines the distinctive characteristics by which we intend our graduates to become known, in the context of their churches, communities, workplaces and relationships.

Formation

Laidlaw graduates will be known as:

- People of faith, their lives shaped by encounter with Jesus, in Scripture, prayer, worship and community.
- People of grace, embracing the tensions of life and faith with a deep sense of their own brokenness and redemption.
- People of love, who encounter others with authenticity and humility, whether sharing laughter or tears.
- People of hope, who invite others into the struggle for beauty and justice, freedom and rest, as they anticipate the new creation.

Context

Laidlaw graduates will participate in:

- The local church, building community by serving, challenging and renewing in love.
- Mission, shaping society by living out the Gospel of hope and reconciliation.
- Bicultural dialogue, partnering with tangata whenua and manuhiri of Aotearoa New Zealand in a spirit of covenantal love and shared story.
- Diverse communities, celebrating culture and difference in respectful and authentic dialogue.
- Vocational settings, pursuing excellence and embodying faith, hope and love in the context of work, home and play.

Knowledge and Understanding

Laidlaw graduates will be renewed by:

- A deeper knowledge of the triune God who is revealed in Jesus and in the witness of the Scriptures and who engages with the world.
- A Christocentric theological method anchored in the Scriptures, engaged with the Church and relevant to life.
- A relational understanding of humanity, of self in relation to others, in the context of a world created for relationship with God.
- A participatory expression of faith, hope and love as primary ways of engaging with people, life and thought.
- A robust grasp of the theories and practices and the historic and contemporary voices of their chosen discipline, in dialogue with theology.

Skills

Laidlaw graduates will be equipped to:

- Engage with issues of life from a deep participation in the Gospel as a primary source of knowledge.
- Read the biblical text in light of the discourse around its interpretation and discern its relevance for contemporary Church and Society.
- Apply their knowledge in skillful, practical ways appropriate to their discipline and in the context of lifelong learning.
- Articulate their faith in dialogue with others with confidence and intelligence, curiosity and respect.

EXPERIENCE IT FOR YOURSELF

We would love to hear from you, to talk about whether study at Laidlaw College can equip you to follow your calling.

Want to find out more?

Plan a Visit

There's no better way to find out what Laidlaw College is like, than to see it for yourself! Come and be a "Student for a Day" on any of our campuses and experience firsthand what our classes, staff and great community are like. We'd love to meet you!

To become a "Student for a Day" contact us by calling 0800 999 777 or email info@laidlaw.ac.nz.

Connect on Social Media

Get a glimpse of what studying at Laidlaw is like on a day-to-day basis.

Follow us  Like us 

Check out our website www.laidlaw.ac.nz

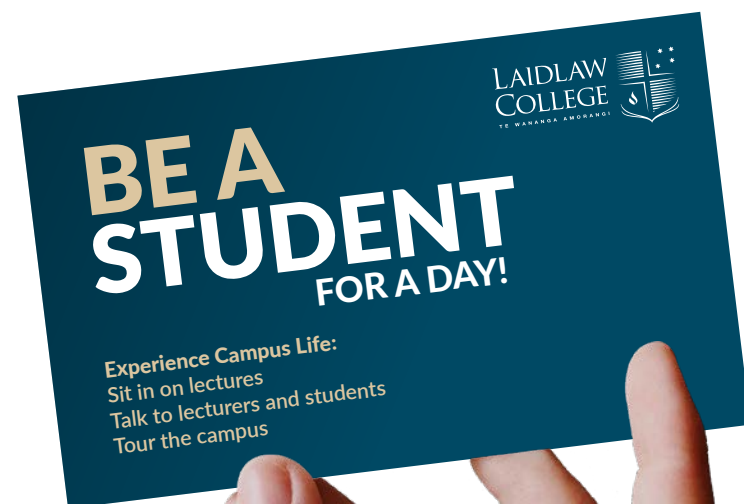
You will find all the information you need about our programmes, staff, campuses and facilities.

Attend Events on Campus

We frequently host events that are open to the public, so if you live in Auckland or Christchurch, this is a great way to begin participating in College life. For those who can't be with us in person, we often livestream events or interviews with visiting scholars. Keep an eye on the website and our Facebook page to find out about upcoming events and recently uploaded videos.

Course and programme information is subject to change.

Please refer to www.laidlaw.ac.nz for latest information or contact us.



READY TO APPLY?

If you've decided on a programme of study and you are ready to apply, you can apply online by visiting www.laidlaw.ac.nz

For information about fees, please see the full Fees Schedule online at www.laidlaw.ac.nz/fees

If you would like to talk to a Laidlaw staff member, please call 0800 999 777 or email info@laidlaw.ac.nz.

www.laidlaw.ac.nz

info@laidlaw.ac.nz

0800 999 777





**HENDERSON
& DISTANCE LEARNING**

P 09 836 7800
E henderson@laidlaw.ac.nz

MANUKAU

P 09 905 4960
E manukau@laidlaw.ac.nz

CHRISTCHURCH

P 03 354 4270
E chch@laidlaw.ac.nz

