

LAIDLAW
COLLEGE
TE WANANGA AMORANGI



PROSPECTUS

STUDY WITH PURPOSE



A large, light blue decorative swirl graphic in the top left corner of the page.

OUR VISION TE WAWATA

A world shaped by love,
compelled and informed by
the Gospel.

OUR MISSION TE WHAKATAKANGA

To equip students and scholars
to renew their communities
with a faith as intelligent as it is
courageous.



WELCOME



**Whakaaroaro tataotanga
Whakaaroaro whānui
Whakaaroaro āpōpō
Hai whakaponohia tōu oranga**

**Think deeply
Think widely
Think about the future
In order to live faithfully**

Tēnā koe,

There are two questions that we ask of students who are considering studying at Laidlaw:

How are you growing and deepening your faith to follow Jesus through all of life?

Who are you called to be, and how do you need to prepare yourself to fully answer this call?

Laidlaw College is an extraordinary community of people, shaped by Scripture, and committed to thinking deeply and well about the hope that we have in Jesus. It is a privilege to lead and serve a talented team who have spent their lives maturing in wisdom so that they can share the fruit of their study and practical experience with others.

We would love to talk with you about whether Laidlaw College should be part of your answer to those two questions, as we work to redeem the world in service of our risen Lord.

In His service,

Dr Roshan Allpress
National Principal/CEO





Tahi Rau Tau 1922-2022

**NZBTI | BCNZ
LAIDLAW COLLEGE**

Thousands of women and men have contributed to the life and mission of this College through prayer, faithful service, and generous giving over the last 100 years.

Robert Laidlaw (1885–1971), one of our founders and President of the College for twenty years, is one of these people.



Robert A. Laidlaw

Robert Laidlaw was a businessman, philanthropist, and influential Christian leader. Founder of the Farmers department stores, his faith underpinned his vocation in business. He had wide-ranging influence in churches and communities across Aotearoa New Zealand and around the world. His life story exemplifies what we hope for all our graduates: a deep commitment to the Gospel, an intelligent and integrated faith grounded in the Bible, and lifelong engagement with the task of renewing the world.

CONTENTS

The Story you're Joining	06
Study Pathways	08
What we Offer	09
Why Study at Laidlaw?	10
Laidlaw Community	13
Where you can Study	14
How you can Study	16
What you can Study	18
Our Programmes at Laidlaw	21
Theology Undergraduate	22
Theology Postgraduate	30
Teacher Education	34
Counselling	40
Scholarships and Funds	44
Application Process for Domestic Students	45
English Language Requirements	46
International Students	48
Application Process for International Students	50
Graduate Profile	53
Got further Questions?	54
Ready to Apply?	55

THE STORY YOU'RE JOINING

Since 1922 Laidlaw College has been equipping leaders for Church and Society.

We offer practical and formational training for pastors and ministers, and prepare people for leadership in every sphere of society. We train teachers and counsellors and equip others for a wide variety of work with people.

Integrate your faith with your vocation through our programmes. Our graduates have gone on to serve as agricultural entrepreneurs, humanitarian aid workers, Members of Parliament, social workers, conservationists, teachers, family counsellors, ministry workers, pastors, and in countless other roles.



Laidlaw is a Category 1 NZQA accredited tertiary educational institution. We are New Zealand's largest theological and interdenominational college, and serve churches across the denominational spectrum. We believe that God has called Christians to work for the renewal of their communities, cultures, economies and environments – to humbly pursue justice and mercy everywhere.

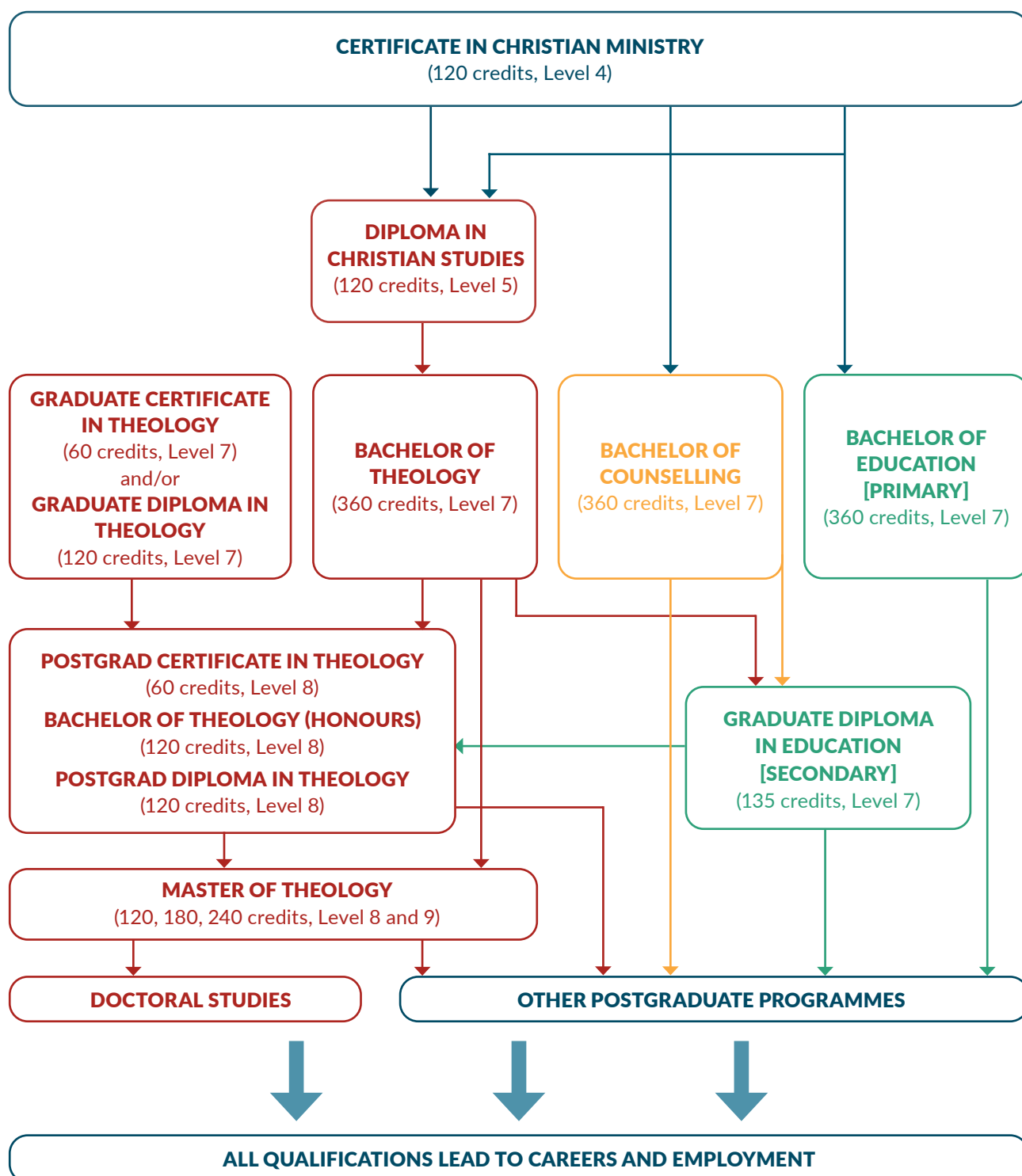
Our range of qualifications includes an entry-level Certificate and Diploma, through to Bachelors and Masters degrees, with key programmes in Theology, Ministry, Teacher Education and Counselling. Students study full-time or part-time at one of our campuses in Henderson or Christchurch, our learning hub in Manukau, through one of our partner colleges and churches, or via distance learning anywhere in the world.

The College brings together women and men from many cultures, with experiences that are unique, and passions and gifts that are diverse, united by the hope that we have in Jesus.

Come join us.



STUDY PATHWAYS



WHAT WE OFFER

LEVELS	QUALIFICATION	DURATION†	CREDITS	INTAKES	PROGRAMME	LOCATION
Levels 4-5	Certificate in Christian Ministry*	Full-time for one year	120	Feb	Theology	Partner Colleges
	Diploma in Christian Studies	Full-time for one year	120	Feb, Jul & Nov	Theology	Henderson Christchurch Manukau (some courses) Distance Learning Partner Colleges
Levels 6-7	Bachelor of Counselling	Full-time for three years	360	Feb & Jul (part-time only)	Counselling	Henderson Christchurch
	Bachelor of Education (Primary)	Full-time for three years	360	Feb & Jul	Education	Henderson Christchurch
	Graduate Diploma in Education (Secondary)	Full-time for one year	135	Jan	Education	Henderson Christchurch
	Bachelor of Theology	Full-time for three years	360	Feb, Jul & Nov	Theology	Henderson Christchurch Manukau (some courses) Distance Learning
	Graduate Certificate in Theology	Full-time for one semester	60	Feb, Jul & Nov	Theology	Henderson Christchurch Manukau (some courses) Distance Learning
	Graduate Diploma in Theology	Full-time for one year	120	Feb, Jul & Nov	Theology	Henderson Christchurch Manukau (some courses) Distance Learning
Levels 8-9	Postgraduate Certificate in Theology	Full-time for one semester	60	Feb, Jul & Nov	Theology	Henderson Distance Learning
	Bachelor of Theology with Honours	Full-time for one year	120	Feb, Jul & Nov	Theology	Henderson Distance Learning
	Postgraduate Diploma in Theology	Full-time for one year	120	Feb, Jul & Nov	Theology	Henderson Distance Learning
	Master of Theology	Full-time for 12-24 months	120, 180, 240	Feb, Jul & Nov	Theology	Henderson Distance Learning

* Not available for International Students

† Part-time options available for most programmes

WHY STUDY AT LAIDLAW?

Committed to the Gospel

At the heart of the Christian faith is the person of Jesus Christ. As revealed in the Bible, he is the fulfilment of God's unfolding work in history to redeem the world. He is the source of knowledge and meaning – the truest example of what it means to be human. We are a College community that seeks to form students to be more like Jesus: in wisdom, character and in working to see the redemption of the world.

Study at Laidlaw is more than preparation for a job – it is an invitation to read the Bible more richly, to know God, to be transformed by the renewing of your mind, and to live a life of missional engagement.

World-class teaching and research

We are the highest-ranked non-university research institution in New Zealand, and a leader in theological education in Australasia. Our teaching is informed by a vibrant research culture, including visiting scholars and practitioners from around the world.

Laidlaw graduates are highly sought after in their fields. Our qualifications are fully-accredited through NZQA and are internationally recognised.

Formation for lifelong leadership

Sustaining faithful leadership over the long term is no easy task. Study is one way to ensure that you dig deep wells, so that your faith will last through the dry times we all experience.

Whatever you are called to, spending time to deepen your knowledge of God is an investment that will bear fruit over many years.

Staff who live what they teach

At Laidlaw you will meet lecturers, tutors and others who have spent years gaining wisdom and experience in ministry, professional life, and in their own spiritual walks.

We are privileged to have a world-class teaching team who combine scholarly brilliance, years of practical experience, and a deep and active personal faith.



“Laidlaw is equipping me to take my faith into the day ahead of me and to

**DRAW FROM
THESE RICH
SOURCES THAT
ARE BEING INPUT
INTO ME.”**

Miriam,
Postgraduate Student





LIDLAW COMMUNITY



We are a diverse community

Laidlaw College staff and students come from many churches, united by their faith in Christ. We hold strongly to our evangelical faith and encourage students to explore the richness of their own and other church traditions in the light of Scripture and the ongoing work of the Holy Spirit in the world.

We have a long tradition of bicultural engagement, and are committed to this ongoing journey. This includes our commitment to te Tiriti o Waitangi, and to developing Māori leaders and indigenous theology.

We are a multicultural and intergenerational community, inspired by the vision of the new creation in which every nation and language declares the glory of God and kingship of Jesus.

We are a supportive community

We are committed to supporting the success of students with disabilities and other barriers to tertiary study. Every student at Laidlaw has access to personalised learning support from our dedicated team of specialists.

We value community

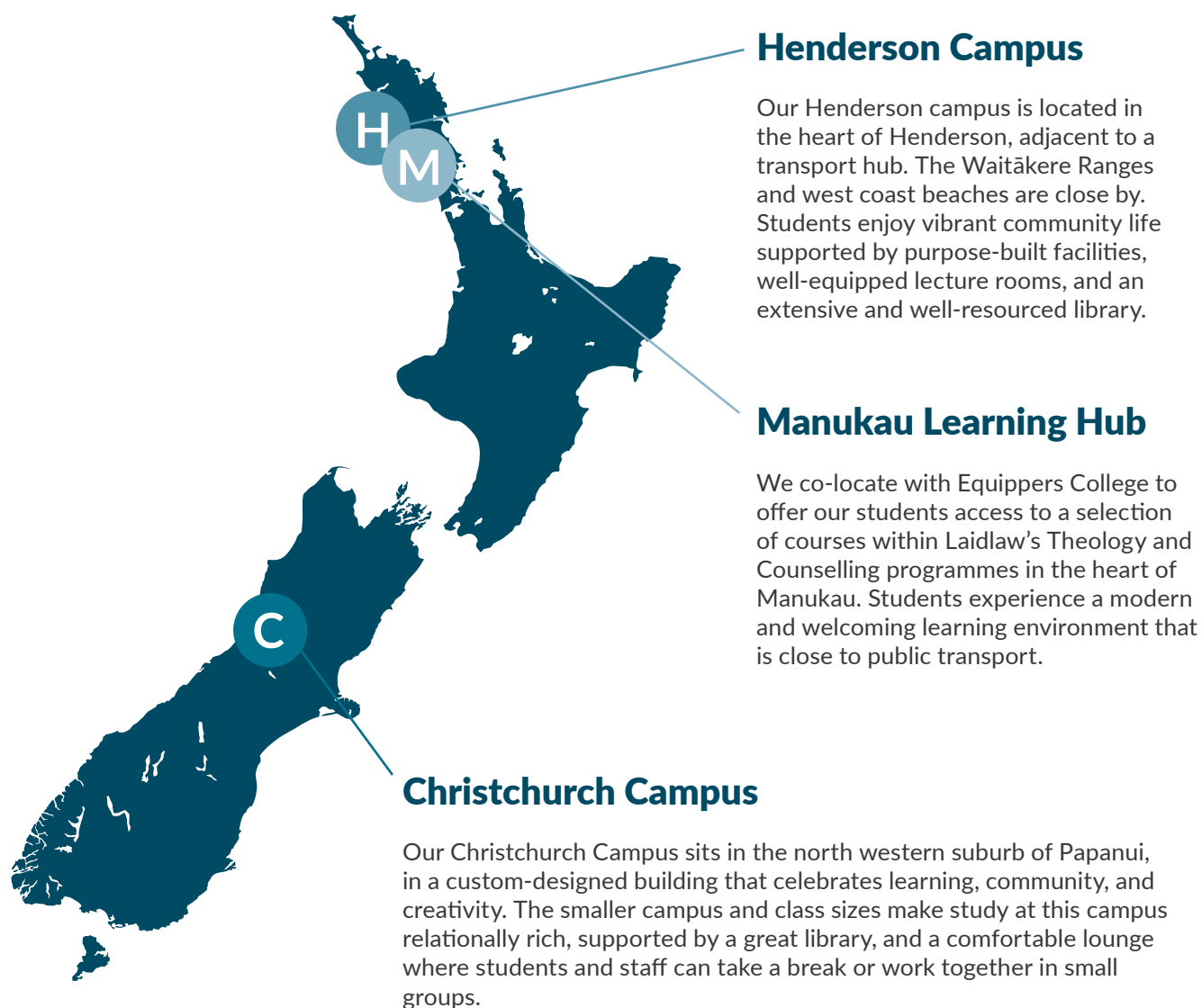
We love the opportunity to gather as a community for special occasions, to worship, to have fun, to share a meal together, and to learn from each other. We invite you to participate in what is more than just an educational programme, but a vibrant community where you can develop relationships with other students and staff.



WHERE YOU CAN STUDY

Laidlaw College has campuses in Henderson (Auckland) and Papanui (Christchurch), and a learning hub in Manukau (Auckland). Our campuses are configured for intercampus video teaching, and together with distance learning options, students can flexibly structure their study to meet their needs. Many students pick what is right for them, choosing a combination of on-campus and distance courses to complete their programme of study.

Laidlaw also partners with a number of other training providers around the country.



STUDY BY DISTANCE

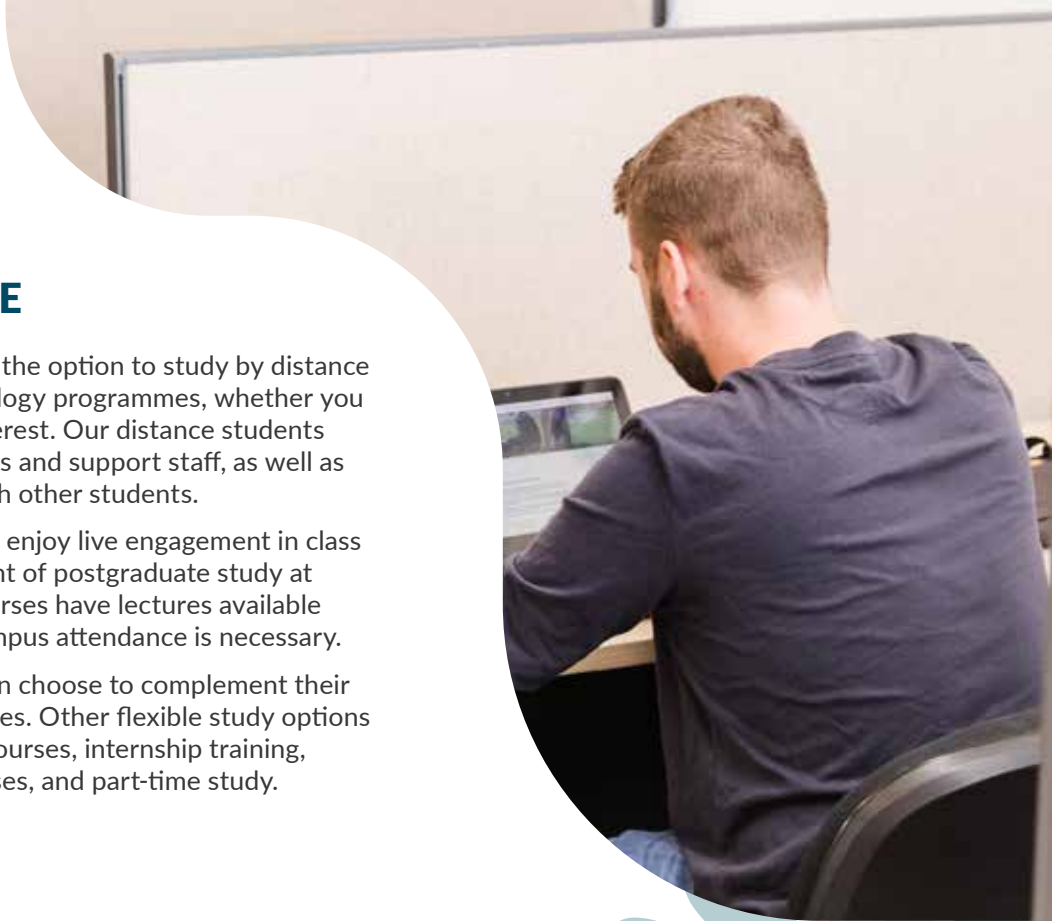
Laidlaw Theology students have the option to study by distance in all of our undergraduate Theology programmes, whether you choose to study for credit or interest. Our distance students are supported by a team of tutors and support staff, as well as opportunities for interaction with other students.

Theology postgraduate students enjoy live engagement in class discussion as an essential element of postgraduate study at Laidlaw. While postgraduate courses have lectures available online, there will be times on-campus attendance is necessary.

Students studying on campus can choose to complement their programmes with distance courses. Other flexible study options include block courses, evening courses, internship training, summer semester distance courses, and part-time study.

PARTNERS

Laidlaw College has partnerships with a broad range of organisations and colleges across Aotearoa.



HOW YOU CAN STUDY

Along with flexible learning locations, we also offer flexible study opportunities. You may want to study just for interest, gaining skills to help you navigate your faith in our cultural context, or going deeper into certain topics of interest. Or you may prefer to study for credit, enrolling in a programme and working towards a qualification.

Any of our theology papers can be taken as interest papers, and we will also highlight a number of Feature Courses every semester which we think you may enjoy. From time to time we hold Workshops, Wānangas, and invite you to kōrero or talanoa with us.

Conferences are another way we invite you to join us. These are opportunities to delve into a wide range of topics, hosted by faculty across our Theology, Counselling and Teacher Education programmes.

You can also choose to study full time or part time. On campus, or online, turn back a page to read more about these options!



STUDY FOR INTEREST

Come and enjoy the class

Get access to all course resources



STUDY FOR CREDIT

Come and enjoy the class

Get access to all course resources

Work towards a qualification





WHAT YOU CAN STUDY

Bible and Theology

Studying theology is about seeking wisdom to live faithfully in the world. Theological study at Laidlaw builds on our strengths in biblical study, systematic theology and formation, and is ideal for those who are seeking to deepen and integrate their faith into every area of life, as well as those preparing for professional Christian ministry.

Mission and Ministry

Laidlaw College was founded on the idea of Christian mission, and continues to focus on the clear, compelling, and faithful communication of the Good News of Jesus Christ for the world. Modern mission studies now incorporate intercultural studies and missional theology, preparing and equipping students for this third millennium. All our theology programmes integrate the realities of our bicultural context as we seek to explore, learn, and live out the Gospel in Aotearoa.

Teacher Education

Our teacher education programmes provide fully-accredited preparation for teaching in primary, intermediate, and secondary schools. Uniquely in New Zealand, our courses are taught by experienced teacher-educators and by theologians, who will help you ground your professional practice in the Gospel of faith, hope, and love, and to engage with children and youth as people made in the image of God.

Christian Leadership


Our Christian leadership programmes are designed to combine practical experience in mission and ministry with theological study and formation. Students are mentored by established leaders, and serve in church or ministry contexts, while studying in preparation for lifelong leadership in church, cross-cultural mission, or communities.

Christian Thought and History

We see the Gospel as relevant to every walk of life, and offer courses in Māori and Indigenous theology, Pacific Theology, Christian History – with a focus on the history of Aotearoa New Zealand – and courses that prepare students to think about their faith in their vocational contexts.

Counselling

Our counselling programme prepares students to serve others through healing hearts, minds, and relationships. Christian thought and practice is integrated throughout the programme, with a uniquely immersive mix of classroom, practicum, group and mentored learning. This qualification is for those who want to build a career in counselling, or those who want to develop lifelong skills for working with people.

A woman with dark hair, wearing a dark jacket and a patterned scarf, is walking towards the camera in a church hallway. The hallway has a green carpet, a wooden door, and several framed portraits on the wall. A staircase with blue carpeting is visible on the right side of the image.

“ My journey since Laidlaw has been such an experience for me, one that will continue to help mould who I am, and who I am becoming.

**IT'S ALSO
MADE ME
REALISE THE
PERSON THAT
I AM, AND
HOW MUCH
GOD IS ON
MY SIDE.”**

Theresa Iloahefaiva
Bachelor of Counselling Graduate



OUR PROGRAMMES AT LAIDLAW

Our programmes aim to give students a deeper appreciation of the Gospel and Scripture, and to learn to think and act imaginatively, critically, faithfully, and practically in the everyday world. Our students will continue to be formed in their Christian faith, and be able to connect their faith to their own lives, and the lives of those around them.

Whether you embark on a journey through Theology, Counselling or Education you will be shaped, challenged, and changed as you take faith in action to the next level.



ICON KEY



LEVEL



CREDITS



NUMBER OF YEARS



DISTANCE LEARNING



ON CAMPUS

THEOLOGY UNDERGRADUATE

“ I began to notice that as we were introduced to each major topic my whole grasp of who God is changed.

**IT WAS FORMATIVE.
MY LOVE FOR
GOD AND MY
UNDERSTANDING
ABOUT WHO HE IS,
DEEPENED.**

And I can't wait to continue exploring.”

Isaac | Theology Student

A stylized graphic of a plant with several long, curved leaves in shades of red and orange, located in the bottom left corner of the page.

Laidlaw's Theology programmes range from certificate to postgraduate level. They are rich in practical experience and in-depth knowledge designed to equip students with a faith as intelligent as it is courageous.

Career Opportunities

Church/Pastoral leadership
Writing & Publishing Chaplaincy
Church-based ministries **YOUTH WORK**
Mission support work Para-church work
Intercultural ministry or mission
MINISTRY WITH SERVICE AGENCIES
Religious Education instruction
Community Development



**Certificate in Christian Ministry
(CertCM)**

**Diploma in Christian Studies
(DipCS)**

**Bachelor of Theology
(BTh)**

**Graduate Certificate in Theology
(GradCertTh)**

**Graduate Diploma in Theology
(GradDipTh)**



**LAIDLAW
THEOLOGY**



CERTIFICATE IN CHRISTIAN MINISTRY - INTERNSHIP (CertCM)[†]



The Certificate in Christian Ministry - Internship provides a pathway for emerging Christian leaders to pursue ministry formation and theological study while serving their churches and community ministries.

Students in the CertCM develop knowledge, skills, and experience by connecting their own reflection on Christian faith with real life practical contexts, equipping them for service in the Church and wider contexts. The CertCM programme also provides a pathway into further study for personal and professional development.

This programme is available through our Partner Colleges.

† This programme requires a student to have an approved placement within a church or Christian organisation. Students are primarily responsible for finding their own placement.

CertCM leads to the New Zealand Certificate in Christian Ministry (Level 4) with a strand in internship.

Admission Requirements

General Admission Requirements

- No secondary schooling or NCEA Level 1 attainment or equivalent: Entry assessment required
- NCEA Level 2 attainment, or equivalent: Open entry

NCEA Equivalence can include:

NZ School Certificate

Sixth Form Certificate

Overseas equivalent qualifications, including IB and CIE, or HSC (Australia)

Other NZQA Level 1 or 2 certificates in relevant disciplines to Laidlaw programmes

Evidence of level of academic achievement or a portfolio of work for homeschooled students*

Reference/support/documentation from employer*

NB. All equivalences must be documented.


**The applicant may need to sit assessment for entry.*

Entry Assessment

- May include a literacy test
- Dates for assessment will be advised

Police Clearance

It is a condition of enrolment in the CertCM that students complete a Police Vetting Service Request and Consent form as part of their application.



“ God highlighted my
growth points and
**ILLUMINATED MY
STRENGTHS.**
My studies gave me the tools to build
a foundation on the word of God and
**LEADERSHIP
WITHIN MINISTRY,**
but most of all it drew me
nearer to God. ”

Britt | CertCM Student

DIPLOMA IN CHRISTIAN STUDIES (DipCS)



The Diploma in Christian Studies provides students with an introduction to Biblical studies, theological studies, and spiritual formation. It prepares them to live out the Gospel of Christ, engaging thoughtfully and compassionately in the world. There are two programmes leading to two strands. All the courses are built on a foundation of biculturalism.

Diploma in Christian Studies (Christian Leadership)¹

Diploma in Christian Studies (Theological Studies)²

The **Christian Leadership** strand[†] equips people to evaluate and deliver ministry programmes within their context, to think deeply about their faith, and to lead a wide range of Christian operations. Students are equipped with a biblical and theological foundation upon which applied Christian leadership skills are developed through internship in real life practical contexts.

The **Theological Studies** strand provides students with an introduction to biblical studies, theological studies, and spiritual formation and prepares them to live out the Gospel of Christ, engaging thoughtfully and compassionately in the world.

Students who complete the DipCS may staircase into the second year of the Bachelor of Theology degree.

¹ DipCS(CL) leads to the New Zealand Diploma in Christian Studies (Level 5) Christian Leadership Strand.

² DipCS(TS) leads to the New Zealand Diploma in Christian Studies (Level 5) Theological Studies Strand.

[†] This programme requires a student to have an approved placement within a church or Christian organisation. Students are primarily responsible for finding their own placement.



For further information regarding DipCS strands please see the Laidlaw College website, or scan here.

Admission Requirements

General Admission Requirements

- NCEA Level 3
- Three subjects at Level 3, made up of 14 credits each, in **three approved subjects** (unless University Entrance was gained in 2020 when only 12 credits each in three approved subjects applies)
- Literacy: **10 credits at Level 2 or above**, made up of:
 - > 5 credits in reading
 - > 5 credits in writing
- Numeracy: **10 credits at Level 1 or above**, made up of:
 - > Achievement standards – specified achievement standards available through a range of subjects, or
 - > Unit standards – package of three numeracy unit standards (26623, 26626, 26627 – **all three required**)

NCEA Equivalence can include:

University Entrance, A or B Bursary.

Overseas equivalent qualifications, including IB and CIE, or HSC (Australia).

Other NZQA Level 3 certificates in similar disciplines to Laidlaw programmes.

Other NZQA Level 4 certificates in a different discipline.

Evidence of level of academic achievement or a portfolio of work for homeschooled students*

Reference/support/documentation from employer*

NB. All equivalences must be documented.

**The applicant may need to sit assessment for entry.*

Entry Assessment

For applicants who do not meet the above requirements, an Entry Assessment may be required.

- Includes a literacy test
- Dates for assessment will be advised

Special Admission

Possible study options can arise depending on the assessment result:

- An offer of entry to the Diploma in Christian Studies if the BTh was applied for
- Entry to the BTh (if appropriate).

Police Clearance

It is a condition of enrolment in the DipCS (Christian Leadership) that students complete a Police Vetting Service Request and Consent form as part of the application.

Please see the Laidlaw College website for full admissions requirements including transitioning from the DipCS to the BTh:

www.laidlaw.ac.nz/admission-requirements

BACHELOR OF THEOLOGY (BTh)



The Bachelor of Theology is designed to provide students with a solid foundation in biblical studies, theological knowledge, and reflection. It provides an in-depth engagement with Scripture, Christian Thought and History, and equips students with the skills they need for pastoral and missional leadership, as well as other ministries. It is also strongly recommended for those seeking theological grounding for higher academic qualifications in biblical and theological studies.

Admission Requirements

General Admission Requirements

- NCEA Level 3
- Three subjects at Level 3, made up of 14 credits each, in **three approved subjects** (unless University Entrance was gained in 2020 when only 12 credits each in three approved subjects applies)
- Literacy: **10 credits at Level 2 or above**, made up of:
 - > 5 credits in reading
 - > 5 credits in writing
- Numeracy: **10 credits at Level 1 or above**, made up of:
 - > Achievement standards – specified achievement standards available through a range of subjects, or
 - > Unit standards – package of three numeracy unit standards (26623, 26626, 26627 – **all three required**)

NCEA Equivalence can include:

University Entrance, A or B Bursary.

Overseas equivalent qualifications, including IB and CIE, or HSC (Australia).

Other NZQA Level 3 certificates in similar disciplines to Laidlaw programmes.

Other NZQA Level 4 certificates in a different discipline.

Evidence of level of academic achievement or a portfolio of work for homeschooled students*

Reference/support/documentation from employer*

NB. All equivalences must be documented.

**The applicant may need to sit assessment for entry.*

Entry Assessment

For applicants who do not meet the above requirements, an Entry Assessment may be required.

- Includes a literacy test
- Dates for assessment will be advised

Special Admission

Possible study options can arise depending on the assessment result:

- An offer of entry to the Diploma in Christian Studies if the BTh was applied for
- Entry to the BTh (if appropriate)

Police Clearance

For those including internship or practicum courses as part of their programme, it is a condition that applicants complete a Police Vetting Service Request and Consent form as part of the application.

Please see the Laidlaw College website for full admissions requirements including transitioning from the DipCS to the BTh:
www.laidlaw.ac.nz/admission-requirements

GRADUATE CERTIFICATE IN THEOLOGY (GradCertTh)



GRADUATE DIPLOMA IN THEOLOGY (GradDipTh)



The Graduate Certificate in Theology and Graduate Diploma in Theology are designed for those who already have an undergraduate qualification. They bring vocational expertise and life experience into dialogue with critical reflection on the Christian faith. Students studying in these programmes will deepen their theological understanding and discover connections between theology and the wider world, the Church, and missions contexts. Completion of the GradDipTh provides a potential springboard into postgraduate study. Graduates from these programmes have returned to their vocations, engaged in missions or community development work in local and global contexts, trained as teachers or moved into church leadership.



Admission Requirements

General Admission Requirements

The normal requirement for admission into the GradCertTh and GradDipTh programmes is a completed undergraduate degree, or higher qualification, as defined in the National Qualifications Framework of the NZQA.

Special Admission

Serious consideration will be given to those who have a combination of relevant experience and non-degree qualifications. This is particularly relevant for those whose qualifications are at a level that, in the current New Zealand environment, is likely to be regarded as having been gained at degree level. Each application will, however, be considered in light of the applicant's overall background and ability to benefit from the programme. The onus is on the applicant to provide details of all qualifications and experience relevant to the application procedure.

“FAITH SEEKING
UNDERSTANDING
WHAKAPONO KIMI
MĀRAMATANGA”
St Anselm

THEOLOGY POSTGRADUATE



There's a need for us to
do this research.

**THERE'S A NEED
FOR US TO KEEP
ON APPLYING
THEOLOGY AND
SCRIPTURE TO
WHAT'S GOING
ON IN SOCIETY**

because of the way that our culture is
moving and changing. I'm inspired to
keep on being diligent with that and the
contribution that I have to make."

Kristy Botha | Laidlaw Postgraduate Student

We seek to nurture and train emerging scholars through world-class postgraduate programmes, and the building of a supportive academic community in which students and established scholars work closely together, each gaining from the engagement of ideas.

Career Opportunities

Church leadership **Writing**
Para-church work **Intercultural ministries**
Resource Development
PASTORAL MINISTRY

You could enter or return to church and mission leadership roles, go on to doctoral study as preparation for a teaching career, or bring theological insight to business, community service, education, and the arts.



**Postgraduate Certificate in Theology
(PGCertTh)**

**Postgraduate Certificate in Theology
(Ministry Supervision) (PGCertTh)**

**Postgraduate Certificate in Theology
(Theology for Education) (PGCertTh)**

**Postgraduate Diploma in Theology
(PGDipTh)**

**Bachelor of Theology with Honours (BTh
(Hons))**

Master of Theology (MTh)

**Master of Philosophy and Doctor of
Philosophy (MPhil and PhD)**

POSTGRADUATE CERTIFICATE IN THEOLOGY (PGCertTh)



The Postgraduate Certificate in Theology (PGCertTh) programme provides an advanced level theological qualification for those who have already completed a recognised Bachelor's level or a Graduate Diploma qualification in Theology. The PGCertTh programme consists of two taught courses.

POSTGRADUATE CERTIFICATE IN THEOLOGY (Ministry Supervision)



As ministry in the contemporary world becomes increasingly complex, regular access to professional supervision is vital. Successful completion of the PGCertTh (Ministry Supervision) will assist graduates in meeting the supervisory needs of people in a range of ministries, as well as professionals in other helping vocations. It is a part-time programme comprised of two successive courses, each 30 credits at level 8, to be completed in order, although not necessarily in the same year.

POSTGRADUATE CERTIFICATE IN THEOLOGY (Theology for Education)



The vocation of teaching is complex in our current cultural moment. Christian teachers have to be aware of current best practice in the classroom and the conversations shaping the way we understand faith and spirituality. It is a part-time programme comprised of two successive courses, each 30 credits at level 8, to be completed in order, although not necessarily in the same year.

POSTGRADUATE DIPLOMA IN THEOLOGY (PGDipTh)



The Postgraduate Diploma in Theology (PGDipTh) programme provides an advanced level theological qualification for those who have already completed a recognised Bachelor's level or a Graduate Diploma qualification in theology. The PGDipTh programme consists of taught courses. Also, students who successfully complete taught courses in the MTh programme amounting to at least 120 credits, but who do not complete a research project, will be awarded the PGDipTh.

BACHELOR OF THEOLOGY (Honours)



The Bachelor of Theology (Honours) one-year programme recognises distinguished study at undergraduate level (level 7). This is a programme of study for those who have successfully completed three years of undergraduate study in theology and want to extend this into graduate level research and writing at level 8.

MASTER OF THEOLOGY (MTh)



The Master of Theology (MTh) is a one to two-year (full-time equivalent) 120, 180 or 240 credit degree. It provides an advanced level theological qualification for those who have already completed a recognised Bachelor's level degree in theology (or in something else plus a recognised bridging programme into Theology, eg: GradDip) and want to upgrade their qualification in a specific area or extend their understanding of Theology and Christian ministries. The degree provides opportunity for Master's level biblical and theological study related to the fields of Biblical Studies, Christian Thought and History and Pastoral, Missional and Contextual Studies, and for students to pursue a research project in an area of interest.

- The 180 credit MTh is available for those who have completed a BTh.
- The 120 credit MTh is available for those who have completed the Postgraduate Diploma or the BTh(Hons).

Advanced Research Degrees and Doctoral Programmes

Under a memorandum of agreement with Auckland University of Technology (AUT), Laidlaw candidates may apply to enrol in the AUT Master of Philosophy or Doctor of Philosophy programmes and to undertake research in theology under the supervision or co-supervision of Laidlaw faculty. As an affiliated institution of the Australian College of Theology (ACT), Laidlaw offers a number of ACT postgraduate programmes.

Students interested in these options should contact laidlawgraduateschool@laidlaw.ac.nz.

Admission Requirements

General Admission Requirements

The normal requirement for admission into the Bachelor of Theology (Honours) programme is a completed three-year undergraduate degree in theology or Christian ministry or equivalent qualification, as defined in the National Qualifications Framework of the NZQA, in an appropriate discipline. Entry into the Bachelor of Theology with Honours is conditional upon:

- A grade point average of 7.0 (B) in courses of the qualifying undergraduate programme at NZQA levels 6 and 7; and
- Approval of the Postgraduate Lead.

The normal requirement for admission into the PGCertTh, PGDipTh, and MTh programmes is a completed undergraduate degree, or higher qualification, as defined in the National Qualifications Framework of the NZQA, in an appropriate discipline. The following options are available:

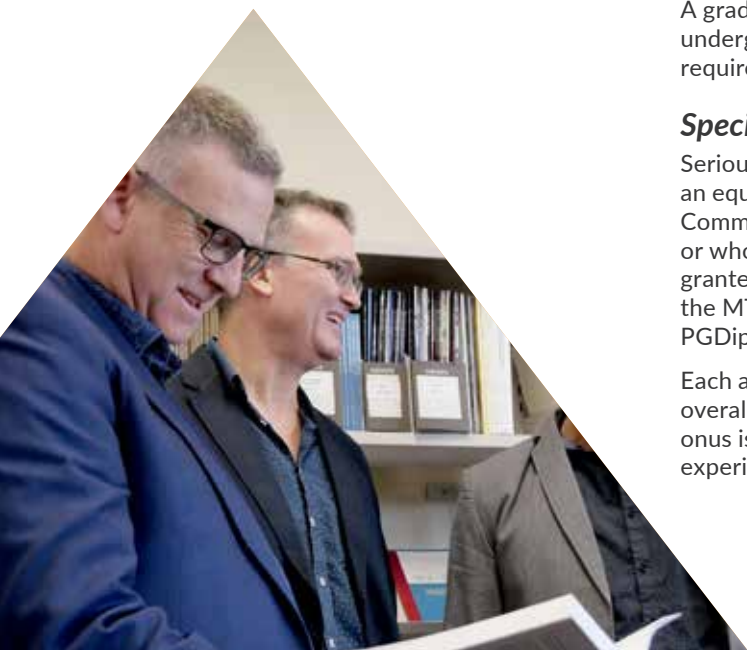
- Completed Bachelor's qualification in theology or Christian ministry OR
- Applicants who hold a recognised Bachelor's level degree in a discipline other than theology may be accepted for study towards the PGDipTh or MTh following successful completion of a bridging programme of theological study, such as those provided by Laidlaw or as approved by the Postgraduate Committee. Bridging requirements may be satisfied wholly or partly by credit transfer and/or recognition of prior learning.

A grade average of 7.0 (B) or higher in papers of the qualifying undergraduate programme equivalent to NZQA levels 6 and 7 is required.

Special Admission

Serious consideration will be given to those who hold qualifications of an equivalent standard. In exceptional circumstances the Postgraduate Committee may allow applicants who do not meet these requirements, or who do not have qualifications of an equivalent standard, to be granted provisional candidature into the PGDipTh. Candidature in the MTh shall be confirmed after the satisfactory completion of the PGDipTh.

Each application will, however, be considered in light of the applicant's overall background and ability to benefit from the programme. The onus is on the applicant to provide details of all qualifications and experience relevant to the application procedure.



EDUCATION

**“HERE AT LAIDLAW,
WE ARE MOTIVATED
TO PREPARE TEACHERS
TO FLOURISH IN NEW
ZEALAND’S COMPLEX,
EVOLVING AND
EXCITING EDUCATIONAL
LANDSCAPE.**

Our programmes ground students in theory and practice, and provide students with a professional learning community that focuses on deep formational learning.

Rebecca Dow | Education Lecturer



Laidlaw's Education programmes prepare teachers to integrate their faith and calling in classrooms across Aotearoa New Zealand.

Influence and form the next generation. Be inspired by collaborative and supportive relationships, theology and innovative teaching practice.

Career Opportunities

Primary School Teacher Tutor

Intermediate School Teacher

Children's ministry worker

SECONDARY SCHOOL TEACHER

COMMUNITY EDUCATION Home educator

Early Childhood Education



Bachelor of Education – Primary (BEd)

Graduate Diploma in Education – Secondary (GradDipEd)



**LAIDLAW
EDUCATION**



BACHELOR OF EDUCATION (PRIMARY) (BEd)



The Bachelor of Education (Primary) is a Teaching Council of Aotearoa New Zealand approved three-year professional degree preparing students for primary teaching (Years 0-10) in New Zealand. Graduates are eligible for registration and can be found in primary, intermediate, state, integrated, and private schools throughout New Zealand and around the world.

The degree combines theory and practice, in dynamic, interactive on-campus learning environments and over 24 weeks of school-based practice. Students think vocationally about teaching and have opportunities to reflect theologically on their practice throughout the degree.

Admission Requirements

General Admission Requirements

Entry to the Laidlaw College Bachelor of Education (Primary) is New Zealand University Entrance or a recognised equivalent (i.e. International Baccalaureate or Cambridge International), or to demonstrate to the satisfaction of Laidlaw College that they have the skills and ability to study at a tertiary level.

Students applying to the BEd without UE must be able to demonstrate to the satisfaction of Laidlaw College that they have the ability to study at a tertiary level.

Students 20 years or older must meet literacy and numeracy requirements comparable to those entering with UE. This will be assessed by the entrance literacy and numeracy testing.

- NCEA Level 3
- Three subjects at Level 3, made up of 14 credits each, in **three approved subjects** (unless University Entrance was gained in 2020 when only 12 credits each in three approved subjects applies)
- Literacy: **10 credits at Level 2 or above**, made up of:
 - > 5 credits in reading
 - > 5 credits in writing
- Numeracy: **10 credits at Level 1 or above**, made up of:
 - > Achievement standards – specified achievement standards available through a range of subjects, or
 - > Unit standards – package of three numeracy unit standards (26623, 26626, 26627 – **all three required**).



UE Equivalence can include:

University Entrance, A or B Bursary

Overseas equivalent qualifications, including IB and CIE, or HSC (Australia)

Other NZQA Level 3 certificates in similar disciplines to Laidlaw programmes

Other NZQA Level 4 certificates in a different discipline.

Evidence of level of academic achievement or a portfolio of work for homeschooled students

Reference/support/documentation from employer

Portfolio of work evidencing contribution to a relevant field

NB. All equivalences must be documented.

Entrance Test Requirements

All applicants are required to have a selection interview and sit an entrance test that focuses on literacy and numeracy skills.

Candidates must score step 4 (or equivalent) in literacy (reading and writing) and step 5 in numeracy for full entry into the course.

Special Admission Requirements

For applicants who do not meet the requirements, possible study options can arise depending on the assessment and interview result:

- Entry to Bachelor of Education (Primary) (if appropriate).

Professional References

Applicants are required to submit written references from two referees. Referees should not be a close friend or relation and should be able to answer questions about the applicant in a ministry and/or professional capacity.

Selection Interview

All applicants are required to have a visual interview by panel. The interview determines:

- The applicant's ability to meet the values of the Code of Professional Responsibility
- The applicant's fitness to engage with young learners
- Vulnerable Children Act risk assessment (interview component) AND
- Other relevant matters

Police Clearance

All applicants must complete a Police Vetting Service Request and Consent form as part of their application. All international applicants for the BEd must provide a police clearance certificate from their country of citizenship **AND** for any country in which they have lived for more than a 12 month period in the last 10 years. This overseas police clearance should be less than 6 months old and be presented at the time of application. This is to meet the requirements of the Vulnerable Children Act 2014.

Charged with an offence

Any Laidlaw College student teacher charged with an offence must disclose the charge in writing to the Head of Education within 3 working days.

Please see the Laidlaw College website for full admissions and English Language Test requirements:

www.laidlaw.ac.nz/admission-requirements

GRADUATE DIPLOMA IN EDUCATION (SECONDARY) (GradDipEd)



The Graduate Diploma in Education (Secondary) is a one-year professional graduate diploma (level 7) and prepares graduates to meet the Code and Standards for the Teaching Profession. You will develop a robust understanding of secondary teaching and learning, reflection, and research as a teacher. The delivery of the degree is site-based with modes: face to face delivery, blended learning, school-based learning, and practicum. This qualification will suit people who are excited by the idea of working alongside teenaged students, who show a disposition to teach, and already have a Bachelor's degree qualification or higher.

Admission Requirements

General Admission Requirements

The normal requirement for admission requires applicants to show evidence they have:

- An appropriate Bachelor's degree at Level 7 on the New Zealand Qualifications Framework and/or postgraduate qualification, **AND**
- A body of knowledge from Levels 5 to 7 or higher in support of New Zealand Curriculum learning areas for at least one Year 7-10 teaching subject/s and at least one Year 11-13 teaching subject/s, **OR**
- For language teaching: native or fluent reading, writing, speaking and listening in the language.

Entrance Test Requirements

All applicants are required to have a selection interview and sit an entrance test that focuses on literacy and numeracy skills.

Candidates must score step 4 (or equivalent) in literacy (reading and writing) and step 5 in numeracy for full entry into the course.

Professional References

Applicants are required to submit written references from two referees. Referees should not be a close friend or relation and should be able to answer questions about the applicant in a ministry and/or professional capacity.

Selection Interview

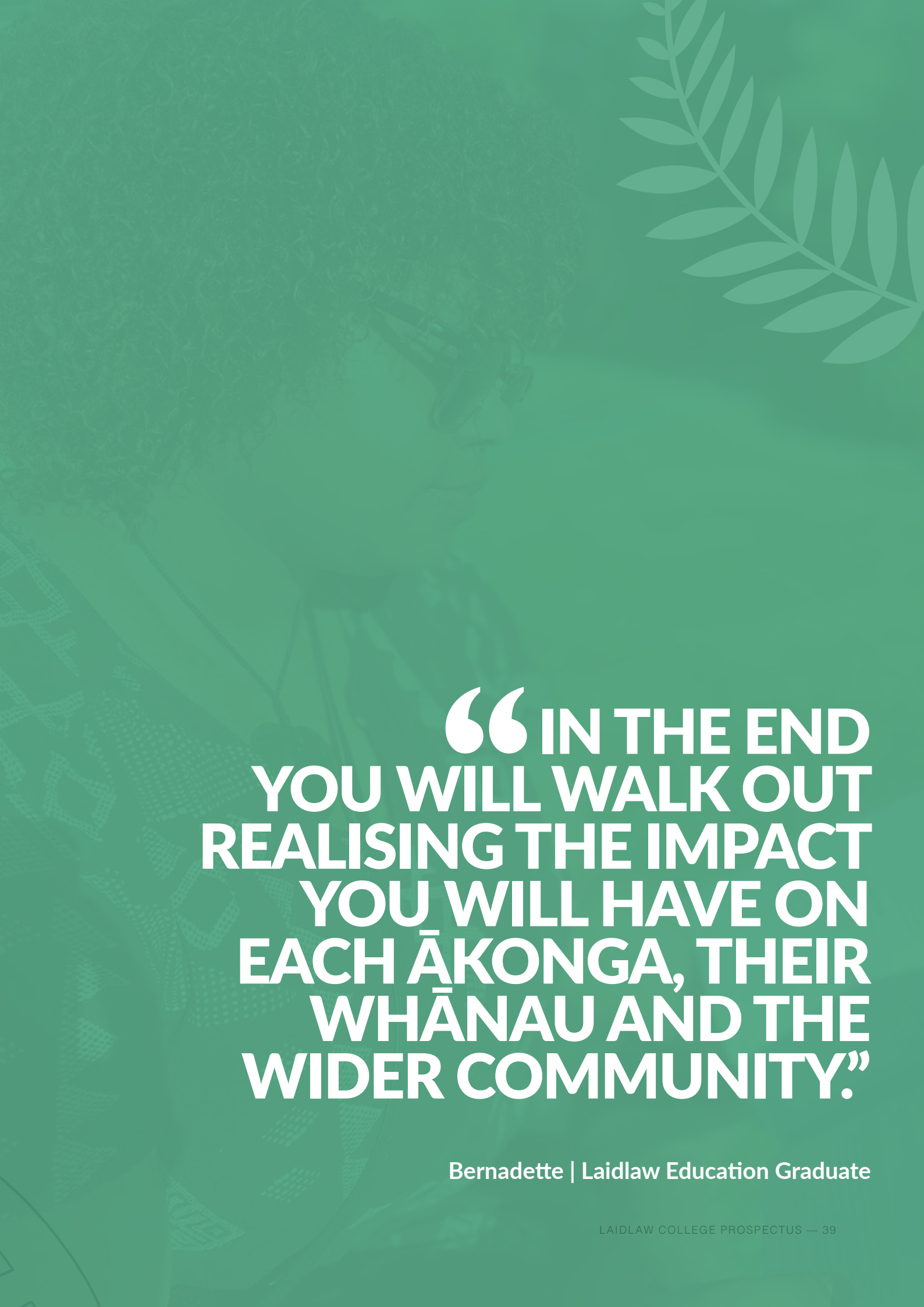
All applicants are required to have a visual interview by panel.

Police Clearance

All applicants must complete a Police Vetting Service Request and Consent form as part of their application. All international applicants for the GradDipEd must provide a police clearance certificate from their country of citizenship **AND** for any country in which they have lived for more than a 12 month period in the last 10 years. This overseas police clearance should be less than 6 months old and be presented at the time of application. This is to meet the requirements of the Vulnerable Children Act 2014.

Please see the Laidlaw College website for full admissions and English Language Test requirements:

www.laidlaw.ac.nz/admission-requirements



**“IN THE END
YOU WILL WALK OUT
REALISING THE IMPACT
YOU WILL HAVE ON
EACH ĀKONGA, THEIR
WHĀNAU AND THE
WIDER COMMUNITY.”**

Bernadette | Laidlaw Education Graduate

COUNSELLING



Not only do you discover
who you are as a person and
discover things about yourself,

**BUT IT ALSO OPENS
YOUR EYES TO THE
LIVES OF OTHERS AND
HOW YOU CAN COME
ALONGSIDE THEM
WITH EMPATHY AND
COMPASSION.**

Trinity | Bachelor of Counselling Student



If you are called to serve others through healing hearts, minds, and relationships, Laidlaw's Counselling Programme offers a uniquely integrated approach to counselling.

Career Opportunities

PERSONAL COUNSELLING Private practice
Schools Family and health support roles
Community development
Workplace assistance and chaplaincy
Christian pastoral work Church work
SOCIAL SERVICE AGENCIES
Innovative postgraduate research



BACHELOR OF COUNSELLING (BCouns)



The Bachelor of Counselling is a three-year degree designed for students who want to integrate Christian faith with a range of sound, well-established counselling theories, and practical skills. This degree prepares you to become a registered counsellor with either the NZ Association of Counsellors or the NZ Christian Counsellors Association. It has a common core of biblical, theological, and philosophical studies which provides a foundation for a deep appreciation of the Scriptures, and the outworking of the Gospel in life and professional practice.

Much of the learning happens in personal counselling and in group process, in which all students participate each semester. It is in these groups that deep and enduring formation takes place. The BCouns is for those who want to build a career in counselling, or those who want to develop lifelong skills for working with people.



LAIDLAW
COUNSELLING



Admission Requirements

General Admission Requirements

- NCEA Level 3
- Three subjects at Level 3, made up of 14 credits each, in **three approved subjects** (unless University Entrance was gained in 2020 when only 12 credits each in three approved subjects applies)
- Literacy: **10 credits at Level 2 or above**, made up of:
 - > 5 credits in reading
 - > 5 credits in writing
- Numeracy: **10 credits at Level 1 or above**, made up of:
 - > Achievement standards – specified achievement standards available through a range of subjects, or
 - > Unit standards – package of three numeracy unit standards (26623, 26626, 26627 – **all three required**).

NCEA Equivalence can include:

University Entrance, A or B Bursary

Overseas equivalent qualifications, including IB and CIE, or HSC (Australia)

Other NZQA Level 3 certificates in similar disciplines to Laidlaw programmes

Other NZQA Level 4 certificates in a different discipline

Evidence of level of academic achievement or a portfolio of work for homeschooled students*

Reference/support/documentation from employer*

NB. All equivalences must be documented.

**The applicant may need to sit assessment for entry.*

Special Admission

Possible study options can arise depending on the assessment result:

- Entry to Bachelor of Counselling (if appropriate).

Professional References

Applicants are required to submit written references from two referees. Referees should not be a close friend or relation and should be able to answer questions about the applicant in a ministry and/or professional capacity.

Selection Interview

All applicants who have successfully completed the first stage of the application process will be provisionally accepted into the programme and invited to attend a group interview and, if required, a further interview by a panel of two selectors.

Police Clearance

It is a condition of enrolment that students complete a Police Vetting Service Request and Consent form as part of their application.

Please see the Laidlaw College website for full admissions requirements including requirements for transitioning into the second year of the BCouns:

www.laidlaw.ac.nz/admission-requirements

Minimum Age

BCouns applicants


All BCouns applicants must be at least 20 years of age on or before the first day of semester in which the proposed programme of study is offered.

Entry Assessment

For applicants who do not meet the above requirements, an Entry Assessment may be required.

- Includes a literacy test.
- Dates for assessment will be advised.





**“THE COURSE WAS
BRILLIANT, BUT THE
MOST IMPACTFUL THING
PERSONALLY WAS THAT
THE PEOPLE AT LAIDLAW
BELIEVED IN ME, AND SO
I CAME TO BELIEVE IN
MYSELF TOO.”**

Letitia | Bachelor of Counselling Graduate

SCHOLARSHIPS AND FUNDS

Laidlaw College provides access to a number of scholarships and funds for students studying in New Zealand. All are annual unless otherwise stated. Scholarship award decisions will be made on the basis of a completed application form by the Laidlaw Scholarships Committee. Scholarship applications for the following year must be received by the 1st day of December each year.

Completing an application does not guarantee you will receive a scholarship. Decisions regarding the awarding of scholarships are affected by available funds, quality of applications, and number of applicants in a given year.



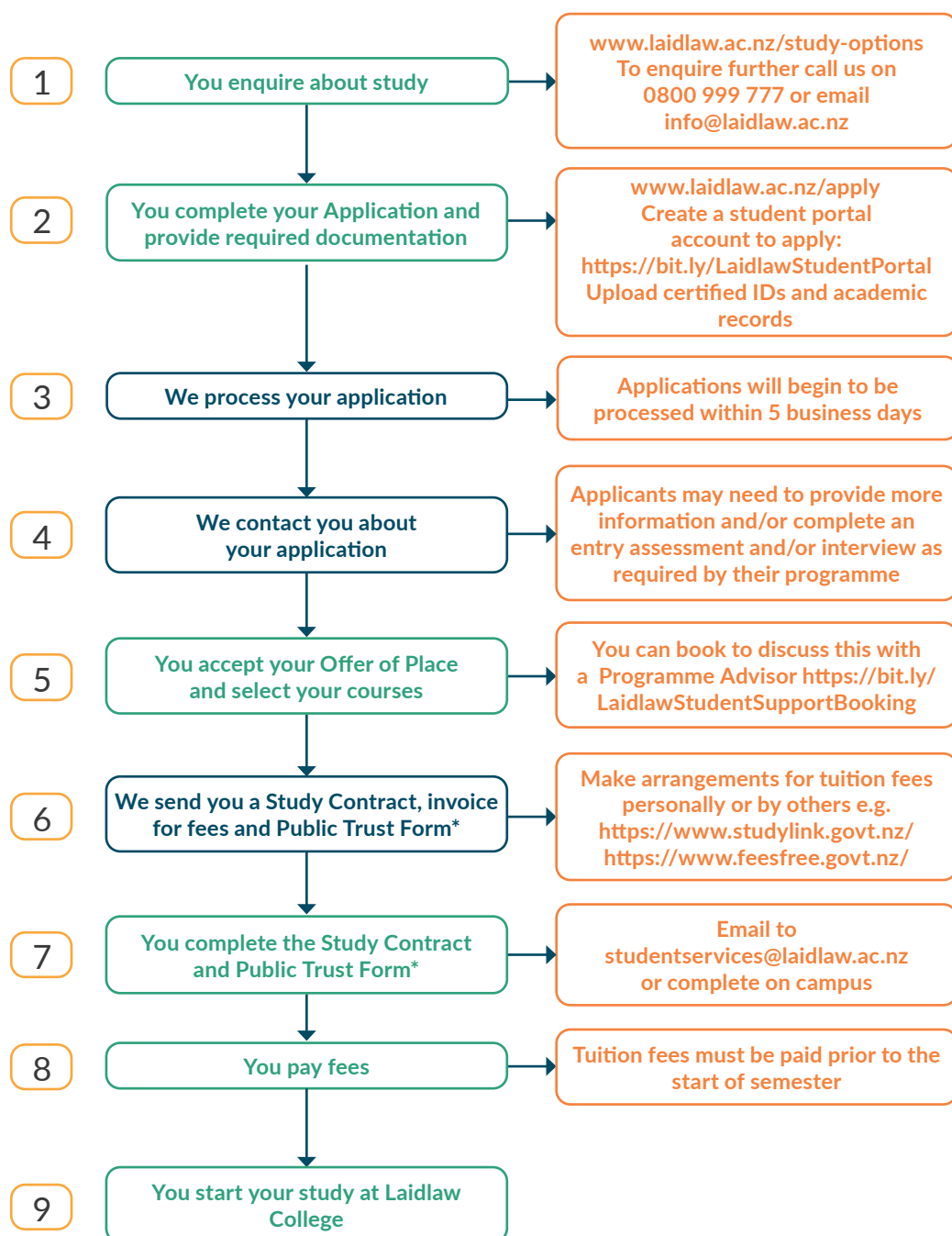
*Please scan the code or
see the Laidlaw website
for more details*

www.laidlaw.ac.nz/scholarships



APPLICATION PROCESS

For Domestic Students



* If applicable - Public Trust provides student fee protection for invoices over \$500 www.publictrust.co.nz/student-fee-protection/

ENGLISH LANGUAGE REQUIREMENTS

Applicants must meet both the Academic and English language requirements for their programme. In addition to the requirements outlined, applicants for whom English is not their first language must use one of the following methods to demonstrate that they have the required level of English proficiency to study in New Zealand:

- Gained NCEA Level 3 and met New Zealand University Entrance requirements; or
- Holds a Bachelor's degree of at least three years from New Zealand, Australia, Canada, the Republic of Ireland, South Africa, the United Kingdom, or the United States of America; or
- Achieved a Certificate in English Language Teaching to Adults (CELTA); or
- Achieved the required score, as indicated in the following subsections, in one of the following internationally recognised English proficiency tests, within the preceding two years:
 - International English Language Testing System (IELTS)
 - University of Cambridge Certificate in Advanced English (CAE)
 - University of Cambridge Certificate of Proficiency in English (CPE)
 - University of Cambridge First Certificate in English (FCE)
 - International English for Speakers of Other Languages qualifications by City and Guilds (IESOL)
 - Pearson Test of English (Academic) (PToE)
 - New Zealand Certificate in English Language (NZCEL)
 - Testing of English as a Foreign Language (TOEFL)

A waiver for the English language test may be granted:

- If the applicant can provide clear evidence of completion of a tertiary qualification of at least three years' duration with English as the language of instruction in New Zealand, Australia, Canada, the Republic of Ireland, South Africa, the United Kingdom, or the United States.
- For those who have studied in NZ for a minimum of two years at secondary school and gained either
 - eight NCEA Level 2 University Entrance literacy credits (4 credits in reading and 4 credits in writing) gained prior to 2014 or
 - ten NCEA Level 2 NCEA University Entrance Literacy credits (5 credits in reading and 5 credits in writing).
- For long-term residents (10+ years) in New Zealand, or another English speaking country, who are able to demonstrate English language competency appropriate to the desired level of study. Competency must be documented.

Please note that these waiver requirements do not apply to the Bachelor of Education (Primary) and Graduate Diploma in Education (Secondary). Applicants should refer to the Laidlaw College website for details: www.laidlaw.ac.nz/admission-requirements

QUALIFICATION	ENGLISH LANGUAGE REQUIREMENTS (ACADEMIC)	
	IELTS	PEARSON TEST OF ENGLISH
Certificate in Christian Ministry*	5.5 or higher with minimum 5.0 in reading and writing	42
Diploma in Christian Studies	6.0 or higher with minimum 6.0 in all bands	50
Bachelor of Theology	6.0 or higher with minimum 6.0 in all bands	50
Bachelor of Counselling	6.5 or higher with minimum 6.0 in all bands	58
Bachelor of Education (Primary) Graduate Diploma in Education	7.0 or higher with minimum 7.0 in all bands (conditions apply)	65
Graduate Certificate in Theology Graduate Diploma in Theology	6.5 or higher with minimum 6.0 in all bands	58
Postgraduate Certificate in Theology Bachelor of Theology with Honours Postgraduate Diploma in Theology Master of Theology	7.0 or higher with minimum 7.0 in writing (conditions apply)	65

*Not available for International Students

For other equivalent English Language Proficiency scores please refer to
www.nzqa.govt.nz/about-us/our-role/legislation/nzqa-rules/nzqf-related-rules/the-table/

“The first time that I arrived, I was the only Indian person in the classroom, but our lecturers and friends were **SO FRIENDLY AND MADE ME COMFORTABLE.** That’s something amazing.”
 Jackson,
 Postgraduate Student

A WORLD SHAPED BY
LOVE
 COMPELLED AND
 INFORMED BY THE
gospel



INTERNATIONAL STUDENTS

How to Apply and Enrol

If you have decided on a programme of study and you are ready to apply, you can apply online at www.laidlaw.ac.nz/apply. The application fee is \$100.

The Application Process

The application process may take some time so it is essential that you make an early start.

When embarking on study abroad there are a number of factors that will support your application to Laidlaw and your time here in New Zealand:

- We like to know that you come with the full backing and support of your church, both in prayer and finances. It is a privilege for us to have a part in training people from around the globe, but it makes a significant difference to have this training recommended and supported by your church.
- It is also important that you have sufficient funds to cover all costs involved for the duration of your study. These include your airfare, insurances, tuition fees, and accommodation costs for each year of your proposed programme. Obtaining part-time or holiday work is not guaranteed, so it pays to look at sourcing finances within your own country before arriving. In the process of obtaining a visa your financial position will be looked into.

Once you have found the programme you would like to apply for, take your time to answer all questions carefully and feel free to forward any queries to our Admissions Team (admissions@laidlaw.ac.nz).

When we have received your application and supporting documents, your application will be considered by the Admissions Team and you will be notified of the result by email. If successful, you will be given full details of fees payable, a medical insurance quote, an Offer of Place, and programme details.

The Offer of Place and receipt of fees paid will form part of your visa application. You can apply online for a Student Visa/Permit on the Immigration NZ website: www.immigration.govt.nz.

Please note: Laidlaw College does not admit any international student under the age of 18.



English Language Proficiency

As all tuition is given in English, proficiency in understanding, reading, writing, and speaking English is necessary. Applicants whose first language is not English are required to have an English Language Proficiency test score (academic version) appropriate to their programme of study (see table on page 47).

A waiver of English Language requirements may be granted by the Admissions Committee if:

- The applicant can provide clear evidence of completion of a tertiary qualification of at least three years' duration with English as the language of instruction in New Zealand, Australia, Canada, the Republic of Ireland, South Africa, the United Kingdom, or the United States, **OR**
- The applicant is from a country with a student visa approval rate of at least 80 percent and can provide clear evidence of study at schools using English as the language of instruction and has either:
 - (a) completed all primary education and at least three years of secondary education (that is, the equivalent of New Zealand forms 3 to 7 or years 9 to 13), or
 - (b) completed at least five years of secondary education (that is, the equivalent of New Zealand forms 3 to 7 or Years 9 to 13).

Fees

For information about fees, please see the full Fees Schedule online at www.laidlaw.ac.nz/fees.

Contact Us

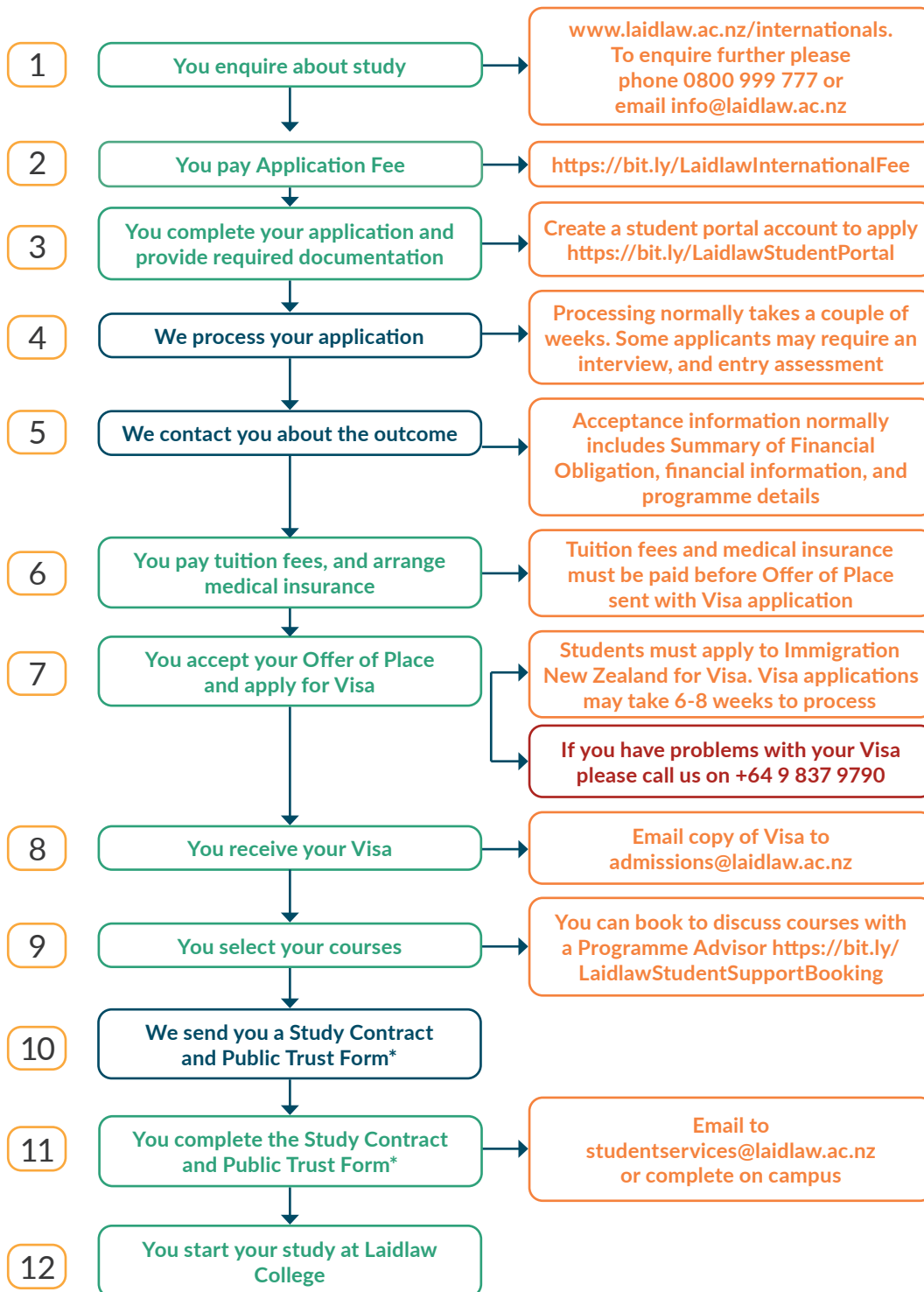
If you would like to talk to someone about study at Laidlaw, please call us on +64 9 836 7800 or email info@laidlaw.ac.nz. If you are in New Zealand you are welcome to visit us at one of our campuses in Auckland or Christchurch.



To find out more about enrolling as an international student check out our website:
www.laidlaw.ac.nz/internationals
or scan the code

APPLICATION PROCESS

For International Students



* If applicable - Public Trust provides student fee protection for invoices over \$500
www.publictrust.co.nz/student-fee-protection/





He ao e auahatia
ana e te
aroha
te akiaki me te
whakamātau a te
rongopai

A WORLD SHAPED BY
LOVE
COMPELLED AND
INFORMED BY THE
gospel

GRADUATE PROFILE

Laidlaw's mission is to equip students and scholars to renew their communities with a faith as intelligent as it is courageous, in service to our vision of a world shaped by love compelled and informed by the Gospel. We strive towards this as imperfect people in need of grace, but convinced that through faith and hope our graduates can influence the Church and world through love. The graduate profile outlines the distinctive characteristics by which we intend our graduates to become known, in the context of their churches, communities, workplaces, and relationships.

Formation

Laidlaw graduates will be known as:

- People of faith, their lives shaped by encounter with Jesus, in Scripture, prayer, worship, and community.
- People of grace, embracing the tensions of life and faith with a deep sense of their own brokenness and redemption.
- People of love, who encounter others with authenticity and humility, whether sharing laughter or tears.
- People of hope, who invite others into the struggle for beauty and justice, freedom and rest, as they anticipate the new creation.

Context

Laidlaw graduates will participate in:

- The local church, building community by serving, challenging, and renewing in love.
- Mission, shaping society by living out the Gospel of hope and reconciliation.
- Bicultural dialogue, partnering with tangata whenua and manuhiri of Aotearoa New Zealand in a spirit of covenantal love and shared story.
- Diverse communities, celebrating culture and difference in respectful and authentic dialogue.
- Vocational settings, pursuing excellence and embodying faith, hope, and love in the context of work, home, and play.

Knowledge and Understanding

Laidlaw graduates will be renewed by:

- A deeper knowledge of the triune God who is revealed in Jesus, and in the witness of the Scriptures, and who engages with the world.
- A Christocentric theological method anchored in the Scriptures, engaged with the Church, and relevant to life.
- A relational understanding of humanity, of self in relation to others, in the context of a world created for relationship with God.
- A participatory expression of faith, hope, and love as primary ways of engaging with people, life, and thought.
- A robust grasp of the theories and practices, and the historic and contemporary voices of their chosen discipline, in dialogue with theology.

Skills

Laidlaw graduates will be equipped to:

- Engage with issues of life from a deep participation in the Gospel as a primary source of knowledge.
- Read the biblical text in light of the discourse around its interpretation, and discern its relevance for contemporary Church and Society.
- Apply their knowledge in skillful, practical ways appropriate to their discipline, and in the context of lifelong learning.
- Articulate their faith in dialogue with others with confidence and intelligence, curiosity, and respect.

GOT FURTHER QUESTIONS? GET IN TOUCH TODAY!



We would love to hear from you, to talk about whether study at Laidlaw College can equip you to respond to your calling.

Want to find out more?

Plan a Visit

There's no better way to find out what Laidlaw College is like, than to see it for yourself! Come and be a "Student for a Day" on any of our campuses and experience firsthand what our classes, staff, and community are like. We'd love to meet you!

To become a "Student for a Day" contact us by calling 0800 999 777 or email info@laidlaw.ac.nz.

Connect on Social Media

Get a glimpse of what studying at Laidlaw is like on a day-to-day basis.

Follow us  Like us 

Check out our website

www.laidlaw.ac.nz

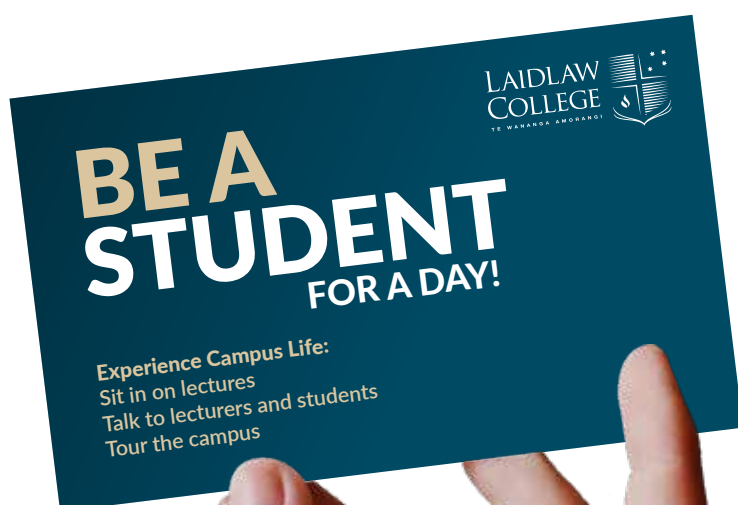
You will find all the information you need about our programmes, staff, campuses, and facilities.

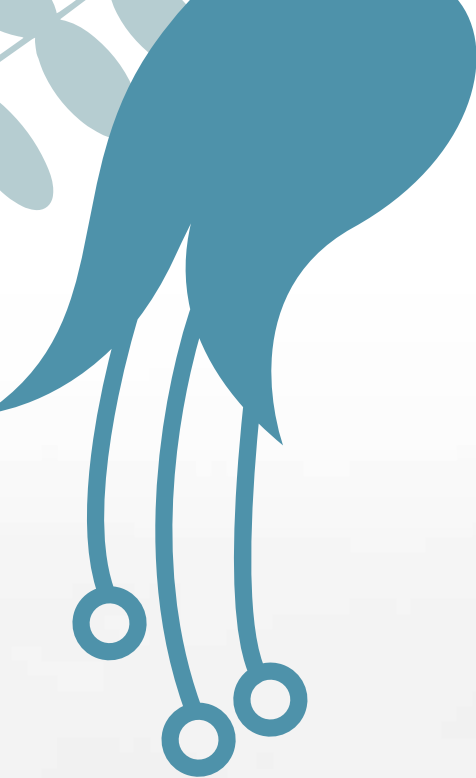
Attend Events on Campus

We frequently host events that are open to the public, so if you live in Auckland or Christchurch, this is a great way to begin participating in College life. For those who can't be with us in person, we often livestream events or interviews with visiting scholars. Keep an eye on the website and our Facebook page to find out about upcoming events and recently uploaded videos.

Course and programme information is subject to change.

Please refer to www.laidlaw.ac.nz for latest information or contact us.





READY TO APPLY?

If you've decided on a programme of study and you are ready to apply, www.laidlaw.ac.nz to apply online.

For information about fees, please see the full Fee Schedule online at www.laidlaw.ac.nz/fees

If you would like to talk to a Laidlaw staff member, please call 0800 999 777 or email info@laidlaw.ac.nz.

www.laidlaw.ac.nz

info@laidlaw.ac.nz

0800 999 777





**HENDERSON
& DISTANCE LEARNING**

P 09 836 7800
E henderson@laidlaw.ac.nz

MANUKAU

P 0800 999 777
E info@laidlaw.ac.nz

CHRISTCHURCH

P 03 354 4270
E chch@laidlaw.ac.nz



www.laidlaw.ac.nz | info@laidlaw.ac.nz | 0800 999 777