



LIDLAW
THEOLOGY

THEOLOGY HANDBOOK 2022



OUR VISION TE WAWATA

A world shaped by love,
compelled and informed by
the Gospel.

OUR MISSION TE WHAKATAKANGA

To equip students and scholars
to renew their communities
with a faith as intelligent as it is
courageous.



Laidlaw College is an evangelical, interdenominational tertiary institution committed to the provision of theological education throughout the whole of New Zealand. Laidlaw College has campuses in Henderson, Manukau and Christchurch – as well as distance learning options, that together offer students a great deal of flexibility in how they structure their study.

Laidlaw College is registered by the New Zealand Qualifications Authority (NZQA) under provisions of the Education and Training Act 2020 and its amendments and is accredited to teach programmes listed in this handbook, all of which have been approved by the Authority.



HAERE MAI WELCOME

Laidlaw College has been preparing men and women to serve the church and the world for 100 years. The School of Theology offers a range of programmes rich in practical experience and in-depth knowledge.

Students will learn to think faithfully, imaginatively and critically about issues that affect all of life and society, gain the tools to translate the Gospel of Christ into action and bring about renewal within their own lives and the lives of those around them. In the process, they will grapple with questions such as “Who is Jesus and what has he done?” and “What does it mean to be human?”

Students might find themselves:

- Studying in Laidlaw’s Internship programme while they continue their church ministry;
- Taking time out for a gap year to strengthen and reinforce their faith before going on to University study;
- Preparing to participate in missions in New Zealand and around the world;
- Training for pastoral leadership;
- Bringing their faith to bear in the workplace;
- Embarking on a life-long academic journey.

The School of Theology offers a diverse backdrop for preparation for ministry. Students enrolled in one of its programmes will find themselves immersed in the world of Scripture and the Church. They will gain the tools to translate the Gospel into action in the areas of social justice, reconciliation, community transformation and personal formation – just to name a few. Laidlaw College will prepare them to renew their community with a faith as intelligent as it is courageous.

Contact details

School of Theology, Laidlaw College
T 09 837 9791
E theology@laidlaw.ac.nz
W www.laidlaw.ac.nz

NOTE: All reasonable efforts have been made to ensure that the information in this Student Guide is accurate and current. However, Laidlaw College is not liable, and makes no guarantee that this information will not be changed or updated. Accordingly, changes and updates may be made without prior notice. This guide can be downloaded from the Laidlaw website (www.laidlaw.ac.nz/theology), and the online version will always contain the latest information.

TABLE OF CONTENTS

Undergraduate Programmes **07**

<i>Certificate in Christian Ministry</i>	09
<i>Diploma in Christian Studies</i>	11
<i>Bachelor of Theology</i>	15
<i>Graduate Certificate in Theology</i>	19
<i>Graduate Diploma in Theology</i>	21

Postgraduate Programmes **24**

<i>Bachelor of Theology (Honours)</i>	26
<i>Postgraduate Certificate in Theology</i>	30
<i>Postgraduate Diploma in Theology</i>	32
<i>Master of Theology</i>	34
<i>Advanced Research Degrees (MPhil, PhD)</i>	38

General Information **39**

<i>Modes of Study</i>	39
<i>Certificate of Proficiency/ Tohu a Pukenga Matauranga</i>	39
<i>Non-formal Study</i>	39
<i>How much does it cost?</i>	40
<i>Enrolment Documents and Payment of Fees</i>	40
<i>Resources and Guides</i>	41
<i>Support and Communication</i>	42
<i>Courses</i>	43
<i>Making Enrolment Changes</i>	43
<i>Assessments</i>	44
<i>Graduation</i>	45
<i>Course Descriptions</i>	48

Appendix **56**

Experience it for yourself **58**

PROGRAMMES

Undergraduate Programmes

Certificate in Study and Employment Pathways

The Certificate in Study and Employment Pathways is a one semester foundational programme of 60 credits at level 4. It is designed to assist students succeed in tertiary education.

Certificate in Christian Ministry

The Certificate in Christian Ministry is a one year introductory internship programme of 120 credits at level 4.

Diploma in Christian Studies

The Diploma in Christian Studies is a one-year introductory programme of 120 credits at level 5.

Bachelor of Theology

The Bachelor of Theology is a three year 360 credit degree at level 7 designed to provide a solid foundation in theological knowledge and reflection.

Graduate Certificate in Theology

The Graduate Certificate in Theology is a one semester 60 credit programme at level 7 designed for those who have already attained an undergraduate degree in another discipline.

Graduate Diploma in Theology

The Graduate Diploma in Theology is a one year 120 credit programme at level 7 designed for those who have already attained an undergraduate degree in another discipline.

Postgraduate Programmes

Bachelor of Theology (Honours)

The Bachelor of Theology (Honours) recognises distinguished study at undergraduate level (level 7) and extends that into study, research, and advanced practice at level 8. It is a single year 120 credit option.

Postgraduate Certificate in Theology

The Postgraduate Certificate in Theology is a one semester 60 credit programme at level 8 designed for those who already have a Bachelor of Theology or a Graduate Diploma in Theology. It provides an opportunity for those with limited time availability to gain a recognised postgraduate qualification in theology.

Postgraduate Diploma in Theology

The Postgraduate Diploma in Theology is a one year 120 credit at level 8 for those who already have a Bachelor of Theology or a Graduate Diploma in Theology.

Master of Theology

The Master of Theology is a flexible programme at level 9 designed to provide an advanced level theological qualification for those who have already completed a recognised Bachelor's level degree in theology.

Master of Philosophy

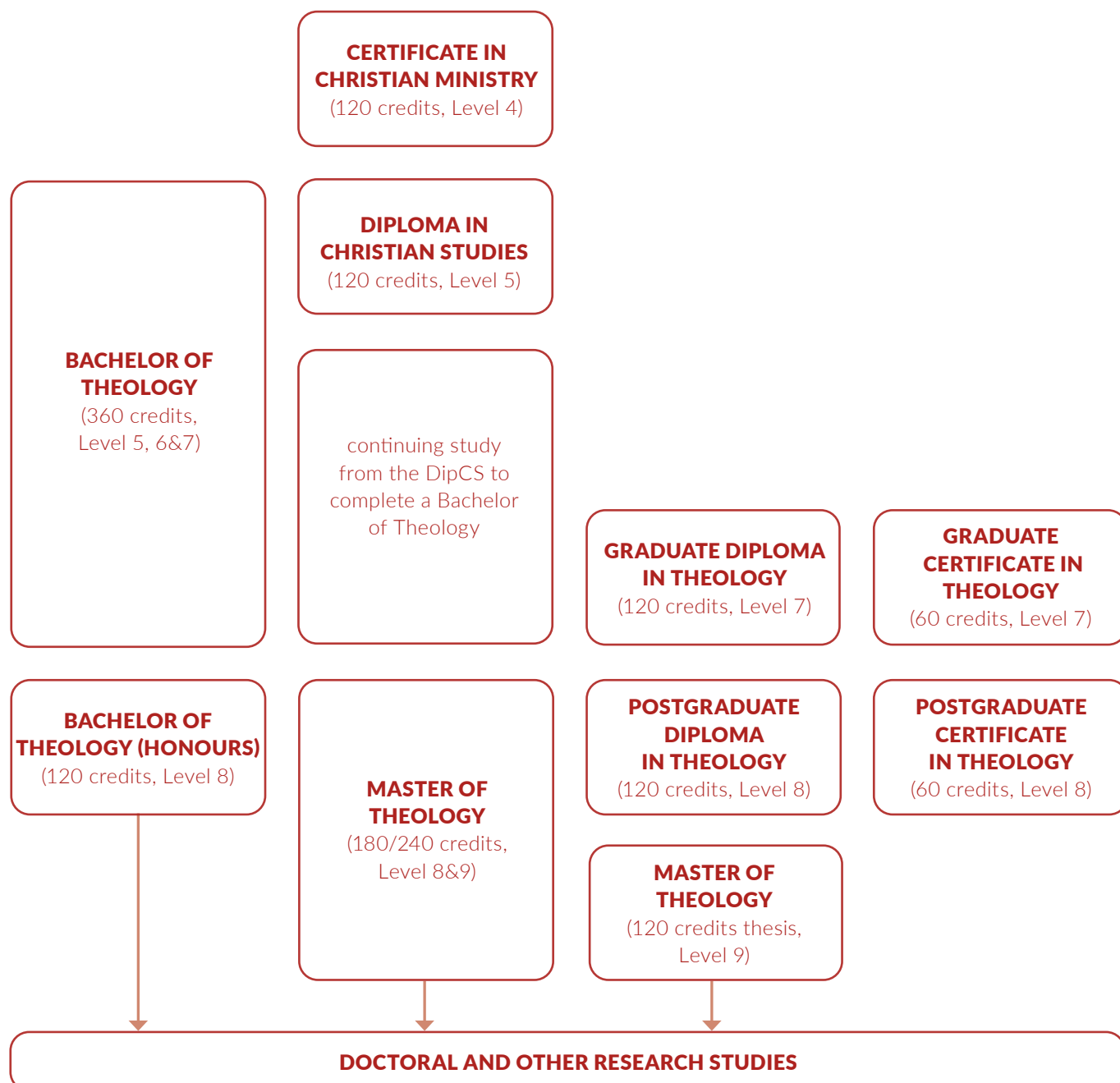
Doctor of Philosophy

Laidlaw offers a variety of advanced research options through its partnerships with select institutions.

Please see the programme details regarding the locations and modes of study.

STUDY PATHWAYS

All of these qualifications lead to career & employment options.



UNDERGRADUATE PROGRAMMES



CERTIFICATE IN STUDY AND EMPLOYMENT PATHWAYS

(LEVEL 4, 60 CREDITS)

THIS IS NOT OFFERED IN 2022

Laidlaw College offers the **Certificate in Study and Employment Pathways (CertPrep)** which assists students with the development of key skills, capabilities, knowledge and attributes needed to succeed in tertiary education including degree level. The programme provides a foundation for students who want to continue into Laidlaw programmes in Theology, Teaching or Counselling through a mixture of academic skills development and reflection on Christian faith and life. The programme focuses on four key areas: Academic reading, writing, and communication; Managing your study and learning; Encountering the Bible and Faith in Action. The CertPrep programme leads to the New Zealand Certificate in Study and Employment Pathways (Level 4).

For more details and availability of the programme see www.laidlaw.ac.nz/foundation-studies

CERTIFICATE IN CHRISTIAN MINISTRY (INTERNSHIP)(CertCM)

Programme Summary

NQF Level	4, 120 credits
Duration	Full-time for 2 semesters, part-time options available
Starts	February
Places	Open – Selection criteria apply
Campus	Laidlaw College Partners
Tuition	\$4,524 plus Student Services Fee
Web	www.laidlaw.ac.nz/theology

Career Opportunities

Paid and voluntary employment in areas such as:

- Chaplaincy
- Church based ministries
- Cross-cultural ministries
- Intercultural ministries
- Mission support workers
- Ministry with service agencies
- Religious education instructor
- Youth Work

Professional development

Effective service as a church member

Personal Christian growth

Workplace Christians

Further study at diploma and degree level

Outline

The Certificate of Christian Ministry (Internship) (CertCM) provides a pathway for emerging Christian leaders to pursue ministry formation and theological study while serving their churches. Students develop knowledge, skills and experience by connecting their own reflection on the Christian faith with real life practical contexts, equipping them for service in the church.

The CertCM (Internship) programme also provides a pathway into further study for further personal and professional development.

It leads to the New Zealand Certificate in Christian Ministry (Level 4) with a strand in Internship.

Graduate Profile

Graduates will be able to:

- Integrate foundational knowledge of selected biblical principles and Christian beliefs and apply to specified communities, acknowledging bicultural or multicultural context.
- Apply biblical and theological principles to own faith journey and to that of others.
- Apply biblical, theological and ministry skills in a mentored practical ministry context to support the spiritual development of individuals and groups.
- Organise and prioritise tasks and responsibilities in the provision of practical ministry to individuals and groups.
- Set goals and make plans for providing practical ministry to individuals and groups.

Requirements

The CertCM (Internship) programme is a one year full-time (or part-time equivalent) programme. The programme is made up of a total of 120 credits.

Students can study in these programmes:

- By arrangement through one of several local learning hubs located around the country.

Compulsory Courses

Theological Foundations	Internships
116.415 Encountering the Bible 216.415 Basics of Christian Belief 416.415 Discipleship 506.415 Faith in Action	472.430 Ministry Internship I 473.430 Ministry Internship II
60 credits	60 credits
TOTAL 120 CREDITS	

Courses

For descriptions of the above courses please refer to page 48.

Admission Requirements

General Admission Requirements

- No secondary schooling or NCEA level 1 attainment or equivalent: Entry assessment required
- NCEA level 2 attainment or equivalent: open entry

NCEA Equivalence can include:

- NZ School Certificate
- Sixth Form Certificate
- Overseas equivalent qualifications, including IB and CIE
- Other NZQA level 1 or 2 certificates in relevant disciplines to Laidlaw programmes
- The following may be accepted as equivalent at our discretion and the applicant may need to sit assessment for entry:
 - Reference/support/documentation from employer
 - Evidence of level of academic achievement or a portfolio of work for home-schooled students

All equivalences must be documented. Entry Assessment includes a literacy test. Dates for assessment will be advised.

English Language Requirements

Applicants must meet both the Academic and English language requirements for this programme. In addition to the requirements outlined above applicants for whom English is not their first language must use one of the following methods to demonstrate that they have the required level of English proficiency to study in New Zealand:

- gained NCEA level 3 and met New Zealand University Entrance requirements; or

- holds a Bachelor's degree of at least three years from New Zealand, Australia, Canada, the Republic of Ireland, South Africa, the United Kingdom or the United States of America; or
- achieved a Certificate in English Language Teaching to Adults (CELTA); or
- achieved the required score, as indicated in the following subsections, in one of the following internationally recognised English proficiency tests, within the preceding two years:
 - International English Language Testing System (IELTS)
 - University of Cambridge Certificate in Advanced English (CAE)
 - University of Cambridge Certificate of Proficiency in English (CPE)
 - University of Cambridge First Certificate in English (FCE)
 - International English for Speakers of Other Languages qualifications by City and Guilds (IESOL)
 - Pearson Test of English (Academic) (PToE)
 - New Zealand Certificate in English Language (NZCEL)
 - Testing of English as a Foreign Language (TOEFL).

A waiver for the English language test may be granted:

- For those applicants who have an undergraduate or higher qualification gained from; New Zealand, Australia, Canada, the Republic of Ireland, South Africa, the United Kingdom or the United States of America.
- For those who have studied in NZ for a minimum of two years at secondary school and gained either a) eight, level 2 NCEA University Entrance literacy credits (4 credits in reading and 4 credits in writing) gained prior to 2014 or b) ten, level 2 NCEA University Entrance Literacy credits (5 credits in reading and 5 credits in writing).
- For long-term residents (10+ years) in New Zealand, or another English speaking country, who are able to demonstrate English language competency appropriate to the desired level of study. Competency must be documented.

The requirement for this programme is:

- IELTS 5.5 with a minimum of 5.0 in reading and writing OR
- Pearson Test of English (Academic) score of 42 OR
- equivalent (see <http://www.nzqa.govt.nz/about-us/our-role/legislation/nzqa-rules/nzqf-related-rules/the-table/>).

Police Clearance

It is a condition of enrolment in the CertCM (Internship) that students complete a Police Vetting Service Request and Consent form as part of their application. International applicants must provide a police clearance certificate from their country of citizenship AND for any country in which they have lived for more than a 12 month period in the last 10 years. This police clearance should be less than 6 months old and be presented at the time of application.

DIPLOMA IN CHRISTIAN STUDIES (DipCS)

Programme Summary

NQF Level	5, 120 credits
Duration	Full-time for 2 semesters, part-time options available
Starts	February and July
Places	Open – Selection criteria apply
Campus	Henderson, Manukau, Christchurch, Distance Learning
Tuition	\$6,372 plus Student Services fee
Web	www.laidlaw.ac.nz/theology

Career Opportunities

Church Leadership

Paid and voluntary employment in areas such as:

- Associate Pastor
- Chaplaincy
- Church based ministries
- Intercultural ministries
- Mission support workers
- Ministry with service agencies
- Religious education instructor
- Youth Work

Professional development

Effective service as a church member

Personal Christian growth

Further study at degree level

Outline

The Diploma in Christian Studies is a one year introductory programme of 120 credits at level 5. There are four programmes and three strands: Christian Leadership (internship), Intercultural studies, and Theological Studies.

Diploma in Christian Studies (Christian Leadership and Theological Studies)¹

No new students are being accepted into this programme.

Diploma in Christian Studies (Christian Leadership)²

The aim of the **DipCS (Christian Leadership)** programme is to provide graduates who are able to apply a range of key leadership skills to build, lead, and contribute to teams that fulfill organisational goals within church, mission, and community contexts.

Diploma in Christian Studies (Intercultural Studies)³

The aim of the **DipCS (Intercultural Studies)** programme is to provide graduates who are able to use intercultural skills and practices to bridge gaps among communities in Aotearoa New Zealand, and provide services in local and global Christian ministry, mission organisations, non-governmental and social organisations, and intercultural communities.

Diploma in Christian Studies (Theological Studies)⁴

The aim of the **DipCS (Theological Studies)** programme is to provide graduates who are able to integrate a broad understanding of theology based on scriptural foundations and ministry practices, and apply these to church, mission, and community contexts in ways that are culturally and ethically appropriate.

Students who complete the DipCS may staircase into the second year of the Bachelor of Theology degree.

¹ *Diploma in Christian Studies (CL&TS) leads to the New Zealand Diploma in Christian Studies with strands in either Christian Leadership or Theological Studies.*

² *DipCS(CL) leads to the New Zealand Diploma in Christian Studies with a strand in Christian Leadership.*

³ *DipCS(IS) leads to the New Zealand Diploma in Christian Studies with a strand in Intercultural Studies.*

⁴ *DipCS(TS) leads to the New Zealand Diploma in Christian Studies with a strand in Theological Studies.*

Objectives

On completion of the Diploma in Christian Studies students will have developed the capacity to tell the biblical story, to read the Scriptures within their wider historical context and to understand a theological framework for life and ministry.

Students will have begun the process of developing the disciplines necessary both to maintain their own spiritual growth and to serve in voluntary leadership capacities within the church and in our world. By the end of this study programme students will have gained the skills required to apply their knowledge in a range of contexts, including vocations in New Zealand and overseas.

Graduate Profile

Graduates of the **Diploma in Christian Studies (Christian Leadership and Theological Studies)** (DipCS (CL&TS)) will be able to:

1. Evaluate and apply a broad understanding of theology and biblical foundations to defined contexts based on textual interpretation and religious practice.
2. Evaluate a ministry programme based on strategies that integrate personal and community faith journeys, and the social, cultural and other contextual considerations of defined groups.
3. Christian Leadership: Apply a range of key leadership skills to build, lead, and contribute to teams that fulfil organisational goals within church, mission, and community contexts.
4. Theological Studies: Integrate a broad understanding of theology based on scriptural foundations and ministry practices, and apply these to church, mission, and community contexts in ways that are culturally and ethically appropriate.

Graduates of the **Diploma in Christian Studies (Christian Leadership)** (DipCS(CL)) will be able to:

1. Evaluate and apply a broad understanding of theology and biblical foundations to defined contexts based on textual interpretation and religious practice.
2. Evaluate a ministry programme based on strategies that integrate personal and community faith journeys, and the social, cultural and other contextual considerations of defined groups.
3. Apply key Christian leadership principles to facilitate team development and accomplish organisational goals in particular areas of responsibility in Christian ministry.

Graduates of the **Diploma in Christian Studies (Intercultural Studies)** (DipCS(IS)) will be able to:

1. Evaluate and apply a broad understanding of theology and biblical foundations to defined contexts based on textual interpretation and religious practice.
2. Evaluate a ministry programme based on strategies that integrate personal and community faith journeys, and the social, cultural and other contextual considerations of defined groups.
3. Use intercultural skills and practices to bridge gaps among communities.

4. Provide necessary services in specific roles required of local and global Christian ministry, mission organisations, non-governmental and social service organisations and intercultural communities.

Graduates of the **Diploma in Christian Studies (Theological Studies)** (DipCS (TS)) will be able to:

1. Evaluate and apply a broad understanding of theology and biblical foundations to defined contexts based on textual interpretation and religious practice.
2. Evaluate a ministry programme based on strategies that integrate personal and community faith journeys, and the social, cultural and other contextual considerations of defined groups.
3. Integrate core tools of theology, biblical texts and ministry practice, and apply these to the broader community to provide leadership and direction that is culturally and ethically appropriate.

Requirements

Christian Leadership

Core Courses:

- 115.515 Reading the Bible
- 201.515 Engaging Theology
- 401.515 Formation
- 505.515 Christian Leadership and Mission

Internship Courses:

- 474.530 Leadership Internship I
- 475.530 Leadership Internship II
- 476.530 Leadership Internship I - Full Year
- 477.530 Leadership Internship II - Full Year

Intercultural Studies

Compulsory Courses:

- 115.515 Reading the Bible
- 201.515 Engaging Theology
- 401.515 Formation
- 505.515 Christian Leadership and Mission
- 907.515 Bicultural Relationships: Tikanga Kawenata either

Elective Courses:

- Either 312.515 Ngā Hunga Hohourongo (The Gospel Peacemakers) OR 313.515 A History of Pacific Christianity
- Either 579.515 Ngā Hunga Maia (Faith-led Māori Leadership) OR 407.515 Discipling Pasifika Communities
- Either 649.515 Whakapapa o te Atuatanga (Genealogy and God) OR 217.515 Pasifika Theology

Theological Studies

Compulsory Courses:

- 115.515 Reading the Bible
- 120.515 Reading the Old Testament
- 140.515 Reading the New Testament
- 201.515 Engaging Theology
- 308.515 Christian History: Our Story
- 401.515 Formation
- 505.515 Christian Leadership and Mission
- 907.515 Bicultural Relationships: Tikanga Kawenata

For descriptions of the above courses please refer to page 48.

For details of these programmes and for study planning support, please contact Student Support: studentsupport@laidlaw.ac.nz.

Transition into Degree Programmes

Bachelor of Theology (BTh)

Completion of any of the DipCS programmes leads to eligibility to apply to enter the 2nd year of a BTh.

Depending on the specific programme you want to transition into there may be some additional required courses.

In exceptional cases the Head of Theology may approve a personal programme of study in order to meet the requirements for the awarding of the degree.

Admissions Requirements

General Admission Requirements

- NCEA Level 3
- Three subjects at Level 3, made up of 14 credits each, **in three approved subjects** (unless University Entrance was gained in 2020 or 2021 when only 12 credits each in three approved subjects applies)
- Literacy: 10 credits at Level 2 or above, made up of:
 - 5 credits in reading
 - 5 credits in writing
- Numeracy: **10 credits at Level 1 or above**, made up of:
 - Achievement standards – specified achievement standards available through a range of subjects, or
 - Unit standards – package of three numeracy unit standards (26623, 26626, 26627 – all three required)

NCEA Equivalence can include:

- University Entrance, A or B Bursary.
- Overseas equivalent qualifications, including International Baccalaureate and Cambridge International Exam, or HSC (Australia).
- Other NZQA Level 3 certificates in similar disciplines to Laidlaw programmes.
- Other NZQA level 4 certificate in a different discipline.
- The following may be accepted as equivalent at our discretion and the applicant may need to sit assessment for entry:
 - Reference/support/documentation from employer
 - Evidence of level of academic achievement or a portfolio of work for home-schooled students

Special Admission

For applicants who do not meet the above requirements, an Entry Assessment may be required. Possible study options can arise depending on the assessment result:

- An offer to the Certificate in Career and Employment Pathways
- An offer to the Certificate of Christian Ministry programme
- Entry to the Diploma in Christian Studies programme
- An offer of entry to the Diploma of Christian Studies if the BTh was applied for
- Entry to the BTh.

Entry Assessment includes a literacy test. Dates for assessment will be advised.

English Language Requirements

Applicants must meet both the Academic and English language requirements for this programme. In addition to the requirements outlined above applicants for whom English is not their first language must use one of the following methods to demonstrate that they have the required level of English proficiency to study in New Zealand:

- gained NCEA level 3 and met New Zealand University Entrance requirements; or
- holds a Bachelor's degree of at least three years from New Zealand, Australia, Canada, the Republic of Ireland, South Africa, the United Kingdom or the United States of America; or
- achieved a Certificate in English Language Teaching to Adults (CELTA); or
- achieved the required score, as indicated in the following subsections, in one of the following internationally recognised English proficiency tests, within the preceding two years:
 - International English Language Testing System (IELTS)
 - University of Cambridge Certificate in Advanced English (CAE)
 - University of Cambridge Certificate of Proficiency in English (CPE)
 - University of Cambridge First Certificate in English (FCE)
 - International English for Speakers of Other Languages qualifications by City and Guilds (IESOL)
 - Pearson Test of English (Academic) (PToE)
 - New Zealand Certificate in English Language (NZCEL)
 - Testing of English as a Foreign Language (TOEFL).

The requirement for this programme is:

- IELTS 6.0 with a minimum of 6.0 in writing, reading, speaking, listening OR
- Pearson Test of English (Academic) score of 58 OR
- equivalent (see <http://www.nzqa.govt.nz/about-us/our-role/legislation/nzqa-rules/nzqf-related-rules/the-table/>)

A waiver for the IELTS may be granted:

- For those applicants who have an undergraduate or higher qualification gained from; New Zealand, Australia, Canada, the Republic of Ireland, South Africa, the United Kingdom or the United States of America.
- For those who have studied in NZ for a minimum of two years at secondary school and gained either a) eight, level 2 NCEA University Entrance literacy credits (4 credits in reading and 4 credits in writing) gained prior to 2014 or b) ten, level 2 NCEA University Entrance Literacy credits (5 credits in reading and 5 credits in writing).
- For long-term residents (10+ years) in New Zealand, or another English speaking country, who are able to demonstrate English language competency appropriate to the desired level of study. Competency must be documented.

Police Clearance

It is a condition of enrolment in the DipCS (Christian Leadership) that students complete a Police Vetting Service Request and Consent form as part of their application, or for those including an Internship course in another programme, before course enrolment can be approved. International applicants must provide a police clearance certificate from their country of citizenship AND for any country in which they have lived for more than a 12 month period in the last

BACHELOR OF THEOLOGY (BTh)

Programme Summary

NQF Level	7, 360 credits
Duration	Full-time for 3 years, part-time options available
Starts	February and July
Places	Open – Selection criteria apply
Campus	Henderson, Manukau, Christchurch, Distance Learning
Tuition	\$6,372 plus Student Services fee
Web	www.laidlaw.ac.nz/theology

Career Opportunities

Church Leadership

Paid and voluntary employment in areas such as:

- Associate Pastor
- Chaplaincy
- Christian writing
- Church based ministries
- Church workers
- Church Youth Work
- Community Youth Work
- Cross-cultural ministries
- Intercultural ministries
- Mission support workers
- Ministry with service agencies
- Ordained ministry
- Para-church work
- Pastoral ministry
- Personal helping vocations
- Senior Pastor
- Academic Careers

Professional development

Effective service as a church member

Personal Christian growth

Further study at master's and doctoral level

Outline

The Bachelor of Theology (BTh) is designed to provide students with a solid foundation in biblical studies, theological knowledge and reflection. It provides an in-depth engagement with Scripture, Christian thought and history and equips students with the skills they need for pastoral and missional leadership, as well as other ministries. It is also strongly recommended for those seeking theological grounding for higher academic qualifications in biblical and theological studies, or those who feel a calling to Christian ministry, whether that be in a local church, an intercultural missions context or in the wider community.

The minimum period of study is three years full-time or an equivalent period part-time. The programme must be completed within eight years of commencement unless special permission is granted by the Head of Theology.

Objectives

This programme aims to equip students to live faithfully in the light of the gospel in the twenty first century. As well as learning to think, research, analyse, and evaluate, students' lives will be shaped and formed through their engagement with Scripture and theology. They will be instructed in how to read and interpret the biblical story in all its richness and diversity, making use of the skills and methods of theological research. They will also gain an understanding of the historical and cultural contexts in which God's people have wrestled with issues of life in generations prior to ours. Students will also be helped to evaluate contemporary issues in the light of their reading of God's word. Students will be assisted in addressing philosophical and methodological questions around Scripture, theology, the history of Christian thought and life, and practical ministry both in other times and places and in the era of which they are part. Graduates will have a confidence in the Gospel, will pursue shalom, practice love, participate in grace, and display a commitment to hope. Graduates will be people equipped to renew their communities with a faith that sees and anticipates the new creation, and which, on that basis, engages the world in love. Love is prior to knowing and knowing comes because we love. Graduates will serve out of a vision of shaping the world with love compelled and informed by the Gospel.

Graduate Profile

On completion of the Bachelor of Theology Laidlaw graduates will:

- Be agents of change and grace as they live out the gospel in diverse vocations.
- Be equipped to be leaders in church, non-profit, educational, and other vocational settings.
- Be thoroughly Christian in terms of their perspective of the world and the centrality of Christ.
- Have established a good biblical and theological knowledge which they can continue to build on.
- Have been mentored, understanding the necessity of relationships for sustained ministry and transformation.
- Have a heart for people and a holistic vision of the gospel making a difference spiritually, socially, emotionally, and physically.
- Have developed the skills of reflective practice which allows them to thoughtfully bring their lived experience into conversation with their biblical and theological knowledge.

- Have developed the skills to discern the uniqueness of how God is at work in a local context.
- Have gained life skills for leading, communicating, resolving conflict, mentoring, and personal management.
- Have developed an awareness of self and their unique set of giftings that enables them to recognise their best fit for Christian ministry practice and their potential for development.
- Be thoroughly versed in their commitments to the Treaty of Waitangi, as tangata whenua or tangata tiriti.

Requirements

The BTh is a stand-alone programme, but it may be completed as a follow on programme, after the successful completion of one of the Diploma in Christian Studies programmes.

The **Programme Guide** below lists the minimum requirements of each area. (Subject to NZQA approval.)

Bachelor of Theology	Biblical Studies (100s)	Christian Thought and History (200-300s)	Pastoral, Missional and Contextual Studies (400-600s)
Minimum credits for degree	90	75	90
	A total minimum of 360 credits A minimum of 180 credits at level 6 or above A minimum of 75 credits at level 7		
Level 5	115.515 Reading the Bible 120.515 Reading the Old Testament 140.515 Reading the New Testament	201.515 Engaging Theology 308.515 Christian History: Our Story	401.515 Formation 505.515 Christian Leadership and Mission 907.515 Bicultural Relationships: Tikanga Kawenata
Level 6 & 7	111.6/715 Interpreting the Bible At least 1 OT and 1 NT exegesis paper	202.6/715 Christology 219.615 Ngākau Maia: Christian Confidence	480.615/715 Faithful Living: Introduction to Reflective Practice 590.715 Capstone: Integrative Practice

In exceptional circumstances, the Head of Theology may approve a personal programme of study which does not conform to a requirement set out here, however the total number of credits required for the award of the degree cannot be adjusted.

Laidlaw Specialisations

- Biblical Studies
- Christian Thought and History
- Missions
- Pastoral Leadership
- Vocational Leadership
- Youth Leadership

For details of these Laidlaw specialisations and for programme planning support please contact the School of Theology.

Courses

For a list of courses that can be selected toward the Bachelor of Theology, please refer to page 48.

Transferring from DipCS (Christian Leadership), DipCS (Intercultural Studies), or DipCS (Theological Studies) to BTh

A student who has successfully completed any of the DipCS programmes may apply to enter the second year of a BTh. A student support advisor will create a study plan to enable the student to complete the BTh requirements.

Admissions Requirements

General Admission Requirements

- NCEA Level 3
- Three subjects at Level 3, made up of 14 credits each, **in three approved subjects** (unless University Entrance was gained in 2020 or 2021 when only 12 credits each in three approved subjects applies)
- Literacy: 10 credits at Level 2 or above, made up of:
 - 5 credits in reading
 - 5 credits in writing
- Numeracy: **10 credits at Level 1 or above**, made up of:
 - Achievement standards – specified achievement standards available through a range of subjects, or
 - Unit standards – package of three numeracy unit standards (26623, 26626, 26627 – all three required)

NCEA Equivalence can include:

- University Entrance, A or B Bursary.
- Overseas equivalent qualifications, including International Baccalaureate and Cambridge International Exam, or HSC (Australia).
- Other NZQA Level 3 certificates in similar disciplines to Laidlaw programmes.
- Other NZQA level 4 certificate in a different discipline.
- The following may be accepted as equivalent at our discretion and the applicant may need to sit assessment for entry:
 - Reference/support/documentation from employer
 - Evidence of level of academic achievement or a portfolio of work for home-schooled students

Special Admission

For applicants who do not meet the above requirements, an Entry Assessment may be required. Possible study options can arise depending on the assessment result:

- An offer to the Certificate in Career and Employment Pathways
- An offer to the Certificate of Christian Ministry programme
- Entry to the Diploma in Christian Studies programme
- An offer of entry to the Diploma of Christian Studies if the BTh was applied for
- Entry to BTh.

Entry Assessment includes a literacy test. Dates for assessment will be advised.

English Language Requirements

Applicants must meet both the Academic and English language requirements for this programme. In addition to the requirements outlined above applicants for whom English is not their first language must use one of the following methods to demonstrate that they have the required level of English proficiency to study in New Zealand:

- gained NCEA level 3 and met New Zealand University Entrance requirements; or
- holds a Bachelor's degree of at least three years from New Zealand, Australia, Canada, the Republic of Ireland, South Africa, the United Kingdom or the United States of America; or
- achieved a Certificate in English Language Teaching to Adults (CELTA); or
- achieved the required score, as indicated in the following subsections, in one of the following internationally recognised English proficiency tests, within the preceding two years:
 - International English Language Testing System (IELTS)
 - University of Cambridge Certificate in Advanced English (CAE)
 - University of Cambridge Certificate of Proficiency in English (CPE)
 - University of Cambridge First Certificate in English (FCE)
 - International English for Speakers of Other Languages qualifications by City and Guilds (IESOL)
 - Pearson Test of English (Academic) (PToE)
 - New Zealand Certificate in English Language (NZCEL)
 - Testing of English as a Foreign Language (TOEFL).

The requirement for this programme is:

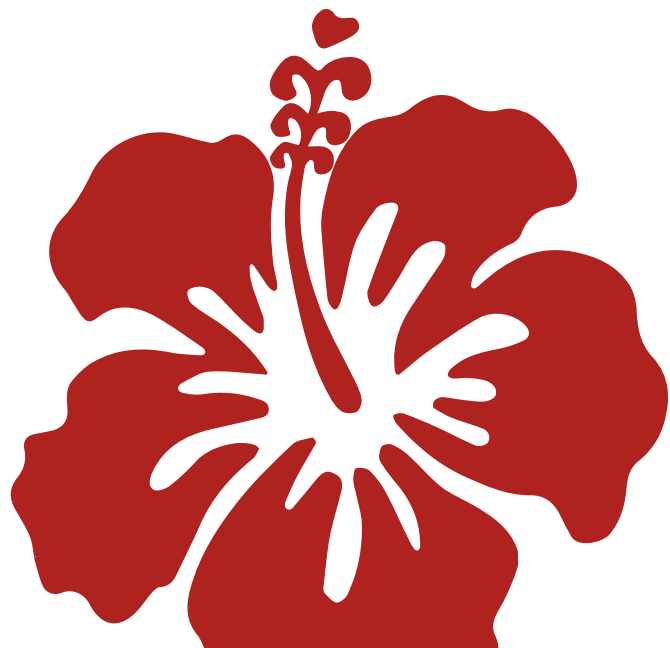
- IELTS 6.0 with a minimum of 6.0 in writing, reading, speaking, listening OR
- Pearson Test of English (Academic) score of 58 OR
- equivalent (see <http://www.nzqa.govt.nz/about-us/our-role/legislation/nzqa-rules/nzqf-related-rules/the-table/>)

A waiver for the IELTS may be granted:

- For those applicants who have an undergraduate or higher qualification gained from; New Zealand, Australia, Canada, the Republic of Ireland, South Africa, the United Kingdom or the United States of America.
- For those who have studied in NZ for a minimum of two years at secondary school and gained either a) eight, level 2 NCEA University Entrance literacy credits (4 credits in reading and 4 credits in writing) gained prior to 2014 or b) ten, level 2 NCEA University Entrance Literacy credits (5 credits in reading and 5 credits in writing).
- For long-term residents (10+ years) in New Zealand, or another English speaking country, who are able to demonstrate English language competency appropriate to the desired level of study. Competency must be documented.

Police Clearance

It is a condition of enrolment in any internship or practicum courses that students complete a Police Vetting Service Request and Consent form as part of their application, or for those including an Internship course in another programme, before course enrolment can be approved. International applicants must provide a police clearance certificate from their country of citizenship AND for any country in which they have lived for more than a 12 month period in the last 10 years. This police clearance should be less than 6 months old and be presented at the time of application.



GRADUATE CERTIFICATE IN THEOLOGY (GradCertTh)

Programme Summary

NQF Level	7, 60 credits
Duration	Full-time for half year, part-time options available
Starts	February and July
Places	Open – Selection criteria apply
Campus	Henderson, Manukau, Christchurch, Distance Learning
Tuition	\$3,186 plus Student Services fee
Web	www.laidlaw.ac.nz/theology

Career Opportunities

Church Leadership

Paid and voluntary employment in areas such as:

- Associate Pastor
- Christian writing
- Church based ministries
- Cross-cultural ministries
- Para-church work
- Pastoral ministry

Professional development

Effective service as a church member

Personal Christian growth

Workplace Christians

Further study at master's and doctoral level

Outline

The Graduate Certificate in Theology (GradCertTh) is designed for those who already have an undergraduate qualification and bring vocational expertise and life experience into dialogue with critical reflection on the Christian faith. Students will deepen their theological understanding and discover connections between theology and the wider world, the church and missions contexts. Completion of the GradCertTh provides a potential springboard into the GradDipTh. Graduates from this programme have returned to their vocations, engaged in missions or community development work in local and global contexts, trained as teachers or moved into church leadership.

The GradCertTh seeks to cater for all of the following:

- Graduates with a non-theological degree who wish to study for a theological qualification with special emphasis on areas of personal interest;
- Graduates with qualifications in theology who wish to deepen their understanding of, and competence in, specific areas of ministry or theological study;
- Those who, although without a degree qualification, have a proven background in experience and academic study deemed to be equivalent to a degree;
- Those who have completed 60 credits of a GradDipTh and choose not to continue on;
- Those who have completed a degree in a non-theological area but who wish to bridge into postgraduate programmes in theology, such as the Masters level MTh offered by the Laidlaw Graduate School.

Objectives

The GradCertTh is designed to:

- Extend a student's understanding and skills in theology through academic instruction;
- Develop the student's ability to access and utilise a body of knowledge in application to ministries-related situations;
- Facilitate rigorous analysis and independent thinking, together with sound communication skills;
- Establish a firm base for further study at postgraduate level.

Requirements

GradCertTh LEVEL 7	
LEVEL	CREDITS
5	Max 15 credits
6	
7	Min 45 credits
Must include 45 credits at level 7 or higher from the Theology curriculum.	
TOTAL CREDITS REQUIRED	60

Admissions Requirements

These are the same as for the Graduate Diploma in Theology on page 20.



GRADUATE DIPLOMA IN THEOLOGY (GradDipTh)

Programme Summary

NQF Level	7, 120 credits
Duration	Full-time for one year, part-time options available
Starts	February and July
Places	Open – Selection criteria apply
Campus	Henderson, Manukau, Christchurch, Distance Learning
Tuition	\$6,372 plus Student Services fee
Web	www.laidlaw.ac.nz/theology

Career Opportunities

Church Leadership

Paid employment in areas such as:

- Associate Pastor
- Christian writing
- Church based ministries
- Cross-cultural ministries
- Intercultural ministries
- Para-church work
- Pastoral ministry

Professional development

Effective service as a church member

Personal Christian growth

Workplace Christians

Further study at master's and doctoral level

Outline

The Graduate Diploma in Theology (GradDipTh) is designed for those who already have an undergraduate qualification and brings vocational expertise and life experience into dialogue with critical reflection on the Christian faith. Students will deepen their theological understanding and discover connections between theology and the wider world, the church and missions contexts. Completion of the GradDipTh provides a potential springboard into postgraduate study. Graduates from this programme will have returned to their vocations, engaged in missions or community development work in local and global contexts and trained as teachers or moved into church leadership.

Because of its flexibility, the GradDipTh will be suitable for learners whose commitments make part-time study over a more or less extended period of time the only viable option, as well as for those who are able to devote one year of full-time study to complete the required courses. The programme must be completed within four years of commencement unless special permission is granted by the Head of Theology.

The GradDipTh seeks to cater for all of the following:

- Graduates with a non-theological degree who wish to study for a theological qualification with special emphasis on areas of personal interest;
- Graduates with qualifications in theology who wish to deepen their understanding of, and competence in, specific areas of ministry or theological study;
- Those who, although without a degree qualification, have a proven background in experience and academic study deemed to be equivalent to a degree;
- Those who have completed a degree in a non-theological area but who wish to bridge into postgraduate programmes in theology, such as the Masters level MTh offered by the Laidlaw Graduate School.

Objectives

The GradDipTh is designed to:

- Extend a student's understanding and skills in theology through academic instruction;
- Develop the student's ability to access and utilise a body of knowledge in application to ministries-related situations;
- Facilitate rigorous analysis and independent thinking, together with sound communication skills;
- Establish a firm base for further study at postgraduate level.

Requirements

GradDipTh LEVEL 7	
LEVEL	CREDITS
5	Max 45 credits
6	
7	Min 75 credits
Must include at least 30 credits from Biblical Studies (100s) and 30 credits from Christian Thought and History of Christianity (200 - 300s).	
TOTAL CREDITS REQUIRED	120

Elective courses are selected from the BTh course schedule.

Laidlaw Specialisations

GradDipTh students have the option of participation in one of the Laidlaw Specialisations. Entry conditions apply. Contact the School of Theology for details.

- Biblical Studies
- Christian Thought and History
- Missions
- Pastoral Leadership
- Vocational Leadership
- Youth Leadership

Admissions Requirements

General Admission Requirements

The normal requirement for admission into the GradCertTh and GradDipTh programmes is a completed undergraduate degree, or higher qualification, as defined in the National Qualifications Framework of the NZQA.

Special Admission Requirements

Serious consideration will be given to those who have a combination of relevant experience and non-degree qualifications. This is particularly relevant for those whose qualifications are at a level that, in the current New Zealand environment, is likely to be regarded as having been gained at degree level. Each application will, however, be considered in light of the applicant's overall background and ability to benefit from the programme. The onus is on the applicant to provide details of all qualifications and experience relevant to the application procedure.

English Language Requirements

Applicants must meet both the Academic and English language requirements for this programme. In addition to the requirements outlined above applicants for whom English is not their first language must use one of the following methods to demonstrate that they have the required level of English proficiency to study in New Zealand:

- gained NCEA level 3 and met New Zealand University Entrance requirements; or
- holds a Bachelor's degree of at least three years from New Zealand, Australia, Canada, the Republic of Ireland, South Africa, the United Kingdom or the United States of America; or
- achieved a Certificate in English Language Teaching to Adults (CELTA); or
- achieved the required score, as indicated in the following subsections, in one of the following internationally recognised English proficiency tests, within the preceding two years:
 - International English Language Testing System (IELTS)
 - University of Cambridge Certificate in Advanced English (CAE)
 - University of Cambridge Certificate of Proficiency in English (CPE)
 - University of Cambridge First Certificate in English (FCE)
 - International English for Speakers of Other Languages qualifications by City and Guilds (IESOL)
 - Pearson Test of English (Academic) (PToE)
 - New Zealand Certificate in English Language (NZCEL)
 - Testing of English as a Foreign Language (TOEFL).

The requirement for this programme is:

- IELTS 6.0 with a minimum of 6.0 in writing, reading, speaking, listening OR
- Pearson Test of English (Academic) score of 58 OR
- equivalent (see <http://www.nzqa.govt.nz/about-us/our-role/legislation/nzqa-rules/nzqf-related-rules/the-table/>)


International applicants to Graduate Diploma in Theology and Graduate Certificate in Theology should seek NZQA evaluation of their non-NZ (overseas) qualifications prior to applying.

A waiver for the IELTS may be granted:

- For those applicants who have an undergraduate or higher qualification gained from; New Zealand, Australia, Canada, the Republic of Ireland, South Africa, the United Kingdom or the United States of America.
- For those who have studied in NZ for a minimum of two years at secondary school and gained either a) eight, level 2 NCEA University Entrance literacy credits (4 credits in reading and 4 credits in writing) gained prior to 2014 or b) ten, level 2 NCEA University Entrance Literacy credits (5 credits in reading and 5 credits in writing).
- For long-term residents (10+ years) in New Zealand, or another English speaking country, who are able to demonstrate English language competency appropriate to the desired level of study. Competency must be documented.

Police Clearance

It is a condition of enrolment in any internship or practicum courses that students complete a Police Vetting Service Request and Consent form as part of their application, or for those including an Internship course in another programme, before course enrolment can be approved. International applicants must provide a police clearance certificate from their country of citizenship AND for any country in which they have lived for more than a 12 month period in the last 10 years. This police clearance should be less than 6 months old and be presented at the time of application.



POSTGRADUATE PROGRAMMES

LIDLAW GRADUATE SCHOOL

A COMMUNITY OF DISCOVERY AT LIDLAW

Laidlaw takes seriously the belief that knowledge comes in community. We 'love to know.' Advanced research and reflection on the implications of the Gospel are important—indeed, essential—contributions to the Kingdom of God. Our desire is to build a community which celebrates learning and discovery and conversation. All students and faculty are invited to contribute to this culture through regular seminars, advanced independent and collaborative research and the sharing of discoveries through publication.

It is recognised that postgraduate study is costly. It takes time, commitment and effort and some find it necessary to study part-time at this level. Laidlaw Graduate School courses are therefore organised around teaching blocks which enable work and family commitments to be planned and organised in advance. However, Laidlaw also offers a number of resources which can make full-time study more possible. The more engaged you are able to be with the community of discovery at Laidlaw the more fruitful will be your postgraduate experience.

Courses and seminars are designed to build community, create conversation and promote excellence.

Courses are typically scheduled around teaching blocks, with required reading in preparation, and classroom input across one or two weeks. Whilst students work independently on their assessments, courses are structured to enable engagement with expertise and other perspectives. The richness of the shared experience of learning is at the heart of a community of discovery.

Seminars are held regularly during the year. All students and research faculty are encouraged to attend. Here you gain support in your own research, hear the fruits and struggles of others, gain essential experience in communicating your findings, and gain from dialogue with other disciplines.

Writers' Workshops are held each semester to enable students to be part of an active postgraduate community and to improve their writing skills.

BACHELOR OF THEOLOGY HONOURS (BTh(Hons))

Programme Summary

NQF Level	8 – 120 credits
Duration	Full-time for one year, part-time options available
Starts	February and July
Places	Open – Selection criteria apply
Campus	Henderson and Distance Learning
Tuition	\$7,404 plus Student Services fee
Structure	Min 30 credits in research methods, 30 credits in honours special topic, and 60 credits in an honours research project

Career Opportunities

Church leadership

Paid employment in areas such as

- Pastoral Leadership
- Missional Leadership
- Vocational leadership
- Lecturer
- Researcher
- Author
- Para-church work

Professional development

Effective service as a church member

Personal Christian growth

Workplace Christians

Further study at masters and doctoral level

Outline

The Bachelor of Theology (Honours) programme recognises distinguished study at undergraduate level (level 7) and extends that into study and research at level 8. This is a programme of study for those who have successfully completed three years of undergraduate study in theology and want to extend this into graduate level research and writing.

Objectives

This programme aims to equip students to live faithfully in the light of the gospel in the twenty first century. As well as learning to think, research, analyse, and evaluate, students' lives will be shaped and formed through their engagement with Scripture and theology. They will be instructed in how to read and interpret the biblical story in all its richness and diversity, making use of the skills and methods of theological research. They will also work with primary source material, gaining an understanding of the historical and cultural contexts in which God's people have wrestled with issues of life in generations prior to ours. Students will also be helped to evaluate contemporary issues in the light of their reading of God's word and the world. Students will be assisted in addressing philosophical and methodological questions around Scripture, theology, the history of Christian thought and life, and practical ministry both in other times and places and in the era of which they are part. Graduates will have a confidence in the Gospel, will pursue shalom, practice love, participate in grace, and display a commitment to hope. Graduates will be people equipped to renew their communities with a faith that sees and anticipates the new creation, and which, on that basis, engages the world in love. Love is prior to knowing and knowing comes because we love. Graduates will serve out of a vision of shaping the world with love compelled and informed by the Gospel.

On completion of the Bachelor of Theology (Honours) Laidlaw graduates will:

- Have developed skills in advanced research and writing.
- Be able to disseminate the results of advanced research to wider networks.
- Engage in self-directed learning and advanced study.
- Demonstrate intellectual independence, analytic rigour, and the ability to understand and evaluate new knowledge and ideas.
- Demonstrate the ability to identify topics for original research, plan and conduct research, analyse results, and communicate the findings to the satisfaction of subject experts.
- Be prepared for higher levels of academic research.

Structure

The Bachelor of Theology (Honours) programme recognises distinguished study at undergraduate level (level 7) and extends that into study and research at level 8. This is a programme of study for those who have successfully completed three years of undergraduate study in theology and want to extend this into graduate level research and writing.

Those wishing to do their Honours Research Project in Biblical Studies require a Biblical language prior to enrolling in this course.

A Bachelor of Theology (Honours) may be awarded to students, where students have successfully completed:

- Postgraduate Research and Writing (30 credits)
- Honours Special Topic (30 credits)
- Honours Research Project (60 credits)

Awards

The BTh (Hons) will be awarded:

- Honours (First Class)
(GPA of 80-100% / A-, A, A+)
 - » Students who achieve first class honours bring intellectual rigour, excellence and insight to their work and reliably and consistently demonstrate an excellent level of synthesis and critique in relation to a depth of specialist knowledge and its impact in the broad context of their discipline.
- Honours (Second Class)
 - First Division
(GPA of 75-79 % / B+)
 - » Students who achieve second class honours, first division, demonstrate an insightful approach to the key issues and debates in their discipline. The work demonstrates a high level of understanding, synthesis, and critique of the issues and thinking.
 - Second Division
(GPA of 65-74% / B-, B)
 - » Students who achieve second class, second division honours demonstrate an insightful approach to the key issues and debates in their discipline. The work demonstrates good understanding, synthesis, and critique of the main issues and thinking.
- Honours (Third Class)
(GPA of 50-64% / C-, C, C+)
 - » Students who achieve third class honours demonstrate an adequate approach to the issues and debates in their discipline. The work demonstrates fair understanding, synthesis, and initial critique of the main issues and thinking.

Admission Requirements

General Admission Requirements

The normal requirement for admission into the Bachelor of Theology (Honours) programme is a completed three-year undergraduate degree in Theology or Ministry or equivalent qualification, as defined in the National Qualifications Framework of the NZQA, in an appropriate discipline. Entry into the Bachelor of Theology (Honours) is conditional upon:

- A grade point average of 7.0 (B) in courses of the qualifying undergraduate programme at NZQA levels 6 and 7; and
- Approval of the Postgraduate Committee.

Special Admission Requirements

Serious consideration will be given to those that hold qualifications of an equivalent standard. In exceptional circumstances the Postgraduate Committee may allow applicants who do not meet these requirements, or who do not have qualifications of an equivalent standard, to be granted provisional candidature into the Bachelor of Theology (Honours) to be confirmed after the first semester of study. Each application will, however, be considered in light of the applicant's overall background and ability to benefit from the programme. The onus is on the student to provide details of all qualifications and experience relevant to the application procedure.

English Language Requirements

Applicants must meet both the Academic and English language requirements for this programme. In addition to the requirements outlined above applicants for whom English is not their first language must use one of the following methods to demonstrate that they have the required level of English proficiency to study in New Zealand:

- gained NCEA level 3 and met New Zealand University Entrance requirements; or
- holds a Bachelor's degree of at least three years from New Zealand, Australia, Canada, the Republic of Ireland, South Africa, the United Kingdom or the United States of America; or
- achieved a Certificate in English Language Teaching to Adults (CELTA); or

- achieved the required score, as indicated in the following subsections, in one of the following internationally recognised English proficiency tests, within the preceding two years:

- International English Language Testing System (IELTS)
- University of Cambridge Certificate in Advanced English (CAE)
- University of Cambridge Certificate of Proficiency in English (CPE)
- University of Cambridge First Certificate in English (FCE)
- International English for Speakers of Other Languages qualifications by City and Guilds (IESOL)
- Pearson Test of English (Academic) (PToE)
- New Zealand Certificate in English Language (NZCEL)
- Testing of English as a Foreign Language (TOEFL).

The requirement for this programme is:

- IELTS 7.0 with minimum of 7.0 in writing OR
- Pearson's Test of English (Academic) score of 65 or higher OR
- equivalent (see <http://www.nzqa.govt.nz/about-us/our-role/legislation/nzqa-rules/nzqf-related-rules/the-table/>)

A waiver for the English language test may be granted:

- For those applicants who have an undergraduate or higher qualification gained from; New Zealand, Australia, Canada, the Republic of Ireland, South Africa, the United Kingdom or the United States of America.
- For those who have studied in NZ for a minimum of two years at secondary school and gained either
 - a) eight, level 2 NCEA University Entrance literacy credits (4 credits in reading and 4 credits in writing) gained prior to 2014 or
 - b) ten, level 2 NCEA University Entrance Literacy credits (5 credits in reading and 5 credits in writing).
- For long-term residents (10+ years) in New Zealand, or another English speaking country, who are able to demonstrate English language competency appropriate to the desired level of study. Competency must be documented.

International applicants to Bachelor of Theology (Honours) should seek NZQA evaluation of their non-NZ (overseas) qualifications prior to applying.



POSTGRADUATE CERTIFICATE IN THEOLOGY (PGCertTh)

Programme Summary

NQF Level	8 – 60 credits
Duration	Full-time for one semester, part-time options available
Starts	February and July
Places	Open – Selection criteria apply
Campus	Henderson and Distance Learning
Tuition	\$3,702 plus Student Services fee
Web	www.laidlaw.ac.nz/ postgraduate-study

Career Opportunities

Church Leadership

Paid employment in areas such as:

- Pastoral Vocations
- Christian writing
- Church based ministries
- Cross-cultural ministries
- Intercultural ministries
- Para-church work

Professional development

Effective service as a church member

Personal Christian growth

Workplace Christians

Further study at master's and doctoral level

Outline

The Postgraduate Certificate in Theology (PGCertTh) programme provides an advanced level theological qualification for those who have already completed a recognised Bachelor's level or a Graduate Diploma qualification in Theology. The PGCertTh programme consists of two taught courses.

Admission requirements

The normal requirement for admission into the Postgraduate Certificate in Theology (PGCertTh) programme is a completed three-year undergraduate degree in Theology or Ministry or equivalent qualification, as defined in the National Qualifications Framework of the NZQA, in an appropriate discipline. Entry into the PGCertTh is conditional upon:

- A grade point average of 7.0 (B) in courses of the qualifying undergraduate programme at NZQF levels 6 and 7; and
- Approval of the Postgraduate Committee.

Special Admission Requirements

Serious consideration will be given to those that hold qualifications of an equivalent standard. In exceptional circumstances the Postgraduate Committee may allow applicants who do not meet these requirements, or who do not have qualifications of an equivalent standard. Approval will be based on:

- Completion of a 120 credit Graduate Diploma in Theology with a grade point average of 7.0 (B) in courses of the qualifying programme at NZQF levels 6 and 7;
- Completion of a recognised undergraduate degree in a discipline other than Theology or Ministry and the completion of a bridging programme of study approved by the Postgraduate Committee with a grade point average of 7.0 (B) in courses of the qualifying programme at NZQF levels 6 and 7; or
- Approved entry by the Postgraduate Committee in consideration of relevant documented academic ability and background.

Each application will, however, be considered in light of the applicant's overall background and ability to benefit from the programme. The onus is on the student to provide details of all qualifications and experience relevant to the application procedure.

English Language Requirements

Applicants must meet both the Academic and English language requirements for this programme. In addition to the requirements outlined above applicants for whom English is not their first language must use one of the following methods to demonstrate that they have the required level of English proficiency to study in New Zealand:

- gained NCEA level 3 and met New Zealand University Entrance requirements; or
- holds a Bachelor's degree of at least three years from New Zealand, Australia, Canada, the Republic of Ireland, South Africa, the United Kingdom or the United States of America; or
- achieved a Certificate in English Language Teaching to Adults (CELTA); or
- achieved the required score, as indicated in the following subsections, in one of the following internationally recognised English proficiency tests, within the preceding two years:
 - International English Language Testing System (IELTS)
 - University of Cambridge Certificate in Advanced English (CAE)
 - University of Cambridge Certificate of Proficiency in English (CPE)
 - University of Cambridge First Certificate in English (FCE)
 - International English for Speakers of Other Languages qualifications by City and Guilds (IESOL)
 - Pearson Test of English (Academic) (PToE)
 - New Zealand Certificate in English Language (NZCEL)
 - Testing of English as a Foreign Language (TOEFL).

The requirement for this programme is:

- IELTS 7.0 with minimum of 7.0 in writing OR
- Pearson's Test of English (Academic) score of 65 or higher OR
- equivalent (see <http://www.nzqa.govt.nz/about-us/our-role/legislation/nzqa-rules/nzqf-related-rules/the-table/>)

A waiver for the English language test may be granted:

- For those applicants who have an undergraduate or higher qualification gained from; New Zealand, Australia, Canada, the Republic of Ireland, South Africa, the United Kingdom or the United States of America.
- For those who have studied in NZ for a minimum of two years at secondary school and gained either
 - a) eight, level 2 NCEA University Entrance literacy credits (4 credits in reading and 4 credits in writing) gained prior to 2014 or
 - b) ten, level 2 NCEA University Entrance Literacy credits (5 credits in reading and 5 credits in writing).
- For long-term residents (10+ years) in New Zealand, or another English speaking country, who are able to demonstrate English language competency appropriate to the desired level of study. Competency must be documented.

International applicants to Postgraduate Certificate in Theology should seek NZQA evaluation of their non-NZ (overseas) qualifications prior to applying.

POSTGRADUATE DIPLOMA IN THEOLOGY (PGDipTh)

Programme Summary

NQF Level	8 – 120 credits
Duration	Full-time for 2 semesters, part-time options available
Places	Open – Selection criteria apply
Campus	Henderson and Distance Learning
Tuition Fee	\$7,284 per full-time year of study plus Student Services Fee
Web	www.laidlaw.ac.nz/postgraduate-study

Career Opportunities

Church Leadership

Paid employment in areas such as:

- Associate Pastor
- Christian writing
- Church based ministries
- Cross-cultural ministries
- Inter-cultural ministries
- Para-church work
- Pastoral ministry

Professional development

Effective service as a church member

Personal Christian growth

Workplace Christians

Further study at Master's and doctoral level

Outline

The Postgraduate Diploma in Theology (PGDipTh) programme provides an advanced level theological qualification for those who have already completed a recognised Bachelor's level or a Graduate Diploma qualification in Theology. The PGDipTh programme consists of taught courses.

Admission Requirements

General Admission Requirements

Candidates will be admitted to the Postgraduate Diploma in Theology programme:

- Where the candidate has completed a recognised three-year Bachelor's degree in Theology or Ministry, with a grade point average of 7.0 (B) in courses of the qualifying undergraduate programme at NZQA levels 6 and 7.
- Where the candidate holds a recognised Bachelor's level degree in a discipline other than Theology or Ministry and has completed a bridging programme such as Laidlaw's 120 credit Graduate Diploma in Theology with a grade point average of 7.0 (B) at NZQA level 7.
- In exceptional circumstances the relevant Academic Head may allow entry to candidates who hold Laidlaw's 60 credit Graduate Certificate in Theology with a grade point average of 7.0 (B) at NZQA level 7.
- In exceptional circumstance the relevant Academic Head may, at their discretion, give special admission to candidates who have successfully completed an alternate academic programme that meets the standard required to enter postgraduate study. Each application will, however, be considered in light of the applicant's overall background and ability to benefit from the programme. The onus is on students to provide details of all qualifications and experience relevant to the application process.

English Language Requirements

Applicants must meet both the Academic and English language requirements for this programme. In addition to the requirements outlined above applicants for whom English is not their first language must use one of the following methods to demonstrate that they have the required level of English proficiency to study in New Zealand:

- gained NCEA level 3 and met New Zealand University Entrance requirements; or
- holds a Bachelor's degree of at least three years from New Zealand, Australia, Canada, the Republic of Ireland, South Africa, the United Kingdom or the United States of America; or
- achieved a Certificate in English Language Teaching to Adults (CELTA); or
- achieved the required score, as indicated in the following subsections, in one of the following internationally recognised English proficiency tests, within the preceding two years:
 - International English Language Testing System (IELTS)
 - University of Cambridge Certificate in Advanced English (CAE)
 - University of Cambridge Certificate of Proficiency in English (CPE)
 - University of Cambridge First Certificate in English (FCE)
 - International English for Speakers of Other Languages qualifications by City and Guilds (IESOL)
 - Pearson Test of English (Academic) (PToE)
 - New Zealand Certificate in English Language (NZCEL)
 - Testing of English as a Foreign Language (TOEFL).

The requirement for this programme is:

- IELTS 7.0 with minimum of 7.0 in writing OR
- Pearson's Test of English (Academic) score of 65 or higher OR
- equivalent (see <http://www.nzqa.govt.nz/about-us/our-role/legislation/nzqa-rules/nzqf-related-rules/the-table/>)

A waiver for the English language test may be granted:

- For those applicants who have an undergraduate or higher qualification gained from; New Zealand, Australia, Canada, the Republic of Ireland, South Africa, the United Kingdom or the United States of America.
- For those who have studied in NZ for a minimum of two years at secondary school and gained either
 - a) eight, level 2 NCEA University Entrance literacy credits (4 credits in reading and 4 credits in writing) gained prior to 2014 or
 - b) ten, level 2 NCEA University Entrance Literacy credits (5 credits in reading and 5 credits in writing).
- For long-term residents (10+ years) in New Zealand, or another English speaking country, who are able to demonstrate English language competency appropriate to the desired level of study. Competency must be documented.

International applicants to Postgraduate Certificate in Theology should seek NZQA evaluation of their non-NZ (overseas) qualifications prior to applying.

MASTER OF THEOLOGY (MTh)

Programme Summary

NQF Level	9 – 120, 180 or 240 credits
Duration	Full-time for 2-4 semesters, part-time options available
Places	Open – Selection criteria apply
Campus	Henderson and Distance Learning
Tuition	\$7,404 plus Student Services fee
Web	www.laidlaw.ac.nz/postgraduate-study

Accelerated Pathways

Theology graduates may pursue postgraduate study by an accelerated pathway which reduces the credit requirements of the MTh. With careful planning a full-time student may be able to complete the degree within a calendar year! See Admission Requirements and Pathways.

Outline

The Master of Theology (MTh) programme provides an advanced level theological qualification for those who have already completed a recognised Bachelor's level or Bachelor's Honours qualification in theology and want to upgrade their qualifications in a specific area to extend their understanding of Christian ministries. The MTh combines a programme of taught courses and written thesis or dissertation. The degree provides opportunity for Master's level biblical and theological study related to the fields of Biblical Studies, Christian Thought and History, Mission and Pastoral Studies and Professional Studies.

Structure

The Master of Theology degree is at least 240 credits except where:

- it builds on a Bachelor's Honours degree, a Postgraduate Diploma in Theology, or an equivalent qualification, or significant relevant professional experience, in which case it can be fewer than 240 but no fewer than 120 credits of which no less than 90 must be at NZQA level 9.
- it builds on a three-year Bachelor's degree or an equivalent qualification completed with a Grade Point average of at least 7.0 (B) in level 6 & 7 courses, in which case it can be fewer than 240 but no fewer than 180 credits of which no less than 60 must be at NZQA level 9.

Objectives

On completion of the MTh programme, students should be able to:

- Evaluate critically a wide spectrum of literature in each of the coursework areas and in the areas of the research undertaken;
- Demonstrate mastery of the issues of debate in each of these areas;
- Give a fair and informed account of representative points of view in each subject area;
- Write a coherent narrative survey which is internally consistent, interacts critically with central issues, and demonstrates ability to form a reasoned opinion;
- Utilise sound hermeneutical principles in contextualising biblical theology within the subject areas studied;
- Demonstrate advanced skills of research, critical analysis and constructive synthesis, and application so as to make a significant contribution to knowledge in their area of specialisation;
- Demonstrate the distinctive contribution of biblical and theological principles to central issues in their subject areas;
- Participate in the international academic discussion of their field of study with a competence appropriate to Master's level;
- Reflect on the professional, ethical and relational implications of their study for ministry in the modern world; and
- Make available to the service of the church appropriate aspects of current scholarship in their field of study

Admission Requirements and Flexible Structures

Level 8 Entry

180 Credit MTh

MTh degree may be completed with 180 credits:

- Where the candidate has completed a recognised three-year Bachelor's degree in Theology or Ministry, with a grade point average of 7.0 (B) in courses of the qualifying undergraduate programme at NZQA levels 6 and 7.

240 Credit MTh

MTh degree requires 240 credits:

- Where the candidate has completed a recognised three-year Bachelor's degree in Theology or Ministry, with a grade point average of 7.0 (B) in courses of the qualifying undergraduate programme at NZQA levels 6 and 7.
- Where the candidate holds a recognised Bachelor's level degree in a discipline other than Theology or Ministry and has completed a bridging programme such as Laidlaw's 120 credit Graduate Diploma in Theology with a grade point average of 7.0 (B) at NZQA level 7.
- In exceptional circumstances, the relevant Academic Head may allow entry to candidates who hold Laidlaw's 60 credit Graduate Certificate in Theology with a grade point average of 7.0 (B) at NZQA level 7.
- In exceptional circumstance the relevant Academic Head may, at their discretion, allow special admission to candidates who have successfully completed an alternate academic programme that meets the standard required to enter postgraduate study. Each application will, however, be considered in light of the applicant's overall background and ability to benefit from the programme. The onus is on students to provide details of all qualifications and experience relevant to the application process.

Level 9 Entry

120 Credit MTh

MTh degree may be completed with 120 credits:

- Where the candidate has completed an approved four-year Honours degree in Theology or Ministry with first or second class honours, with a grade point average of at least 7.0 (B).
- Where the candidate has completed an approved Postgraduate Diploma in Theology with a grade point average of 7.0 (B).
- In exceptional circumstance the relevant Academic Head may, at their discretion, allow special admission to candidates who have successfully completed an alternate academic programme that meets the standard required to enter postgraduate study. Each application will, however, be considered in light of the applicant's overall background and ability to benefit from the programme. The onus is on students to provide details of all qualifications and experience relevant to the application process.

**“STUDYING AT
LAIDLAW,
WHILE PRACTISING
AS A PASTOR, HAS
HELPED EXPAND
MY THINKING
AND THEOLOGY
AROUND CHRISTIAN
LEADERSHIP.**

I appreciate how Laidlaw seeks to help students contextually apply their learning. For me this learning edge has continued through my involvement with Engage: Laidlaw Centre for Church Leadership and through our church benefitting from Laidlaw’s ministry internship programme.”

**Mike Yates
Pastor, Shore Grace Church
and Director of Ministerial
Development, Wesleyan
Methodist Church of NZ**





CHRISTIAN SNEETCHES
FROM THE HOUSE OF DAVID
INTRODUCED BY THE BISHOP OF AUCKLAND

ADVANCED RESEARCH DEGREES (MPhil, PhD)

The Master of Philosophy (MPhil) and Doctor of Philosophy (PhD) are advanced research degrees, suitable for preparation to be an academic scholar and teacher. Under a memorandum of agreement with Auckland University of Technology (AUT) graduates of Laidlaw Graduate School may apply to enrol in the AUT MPhil or PhD programme and to undertake research in theology under the supervision or co-supervision of LGS faculty. Such students are subject in all respects to the regulations of AUT and should familiarise themselves with the AUT Calendar available on the AUT website www.aut.ac.nz. Students interested in any of these options should contact the Head of Theology.

Under another agreement, with the Theology Programme at the University of Otago, students may apply to enrol in the Otago PhD with an endorsement from Laidlaw Graduate School. If accepted by the University of Otago they may then satisfy the Otago residency requirements at a Laidlaw campus and with the approval of Otago, receive some of their supervision from LGS.

As an affiliated institution of the Australian College of Theology (ACT), Laidlaw offers a number of ACT postgraduate programmes including the Doctor of Ministry, Doctor of Theology, and Doctor of Philosophy.

Further details on advanced research degree options are available on the AUT website www.aut.ac.nz, the University of Otago website www.otago.ac.nz, or the Australian College of Theology website www.actheology.edu.au. Students interested in exploring this option should consult the Postgraduate Lead.



GENERAL INFORMATION

Modes of Study

Laidlaw students are able to study in a variety of modes – some entirely on campus (but across campuses); entirely by distance; and a mix of on-campus and distance courses configured flexibly for the student. Some courses are also taught as blocks during our intensives weeks. We also offer a selection of summer school courses, by Distance Learning.

Distance Learning

Distance Learning is an integral part of Laidlaw's academic delivery. Six of Laidlaw's degree level qualifications, Diploma in Christian Studies (Christian Leadership (DipCS(CL)), Diploma in Christian Studies (Intercultural Studies (DipCS (IS)), Diploma in Christian Studies (Theological Studies (DipCS(TS))), the Bachelor of Theology (BTh), the Graduate Certificate in Theology (GradCertTh) and the Graduate Diploma of Theology (GradDipTh) are available by distance learning.

R351.830 Postgraduate Research and Writing is available by distance learning.

On Campus Study

Laidlaw College has three physical campuses in **Henderson** and **Manukau** in Auckland, and in **Christchurch**, as well as its Distance Learning mode of delivery. Please refer to the timetables on the website to determine which programmes can be studied at each campus.

Certificate of Proficiency/ Tohu a Pukenga Matauranga

Students who wish to study for credit but do not plan to complete one of Laidlaw's NZQA-accredited programmes will be enrolled in the Laidlaw Certificate of Proficiency (COP) or Tohu a Pukenga Matauranga (TPM). Students must meet all normal academic requirements for both courses. Such students will be awarded a Laidlaw Certificate of Proficiency for completed courses. The credits gained for such courses can be cross-credited into one of Laidlaw's NZQA-accredited qualifications at a future date at no cost, should students choose to do so. Students enrolled in either of these courses are not eligible for student loans and allowances.

Non-Formal Study

Students who wish to attend lectures at one of Laidlaw's campuses but not complete assessments will be enrolled as non-formal students. Students who choose this option do not receive academic credit, nor can they upgrade to credit at a future time. This option is not available for Distance Learning courses. There may be limited places for non-formal study in each course. Normally, non-formal study will only be available within the School of Theology.

How much does it cost?

Please see the programme descriptions in this handbook or the Laidlaw Fee Schedule (www.laidlaw.ac.nz/fees) for tuition and other costs associated with studying at Laidlaw.

Domestic and International Student Costs

The New Zealand government helps subsidise the cost of study for domestic students. Domestic students are defined as citizens of New Zealand living anywhere in the world, or citizens of Niue, Tokelau, Cook Islands or Australia who are living in New Zealand, or people who are Permanent Residents of Australia (restrictions apply) or New Zealand who are living in New Zealand.

International (i.e. non-domestic) students are not subsidised by New Zealand government funding. International students are therefore required to pay the international fees, which more accurately reflect the true cost of the training provided.

Permanent Residents of New Zealand who study while residing overseas are considered international students. Please see the International Prospectus for full notes on these topics.

Student Loans and Allowances

All programmes offered by Laidlaw have been approved by the New Zealand Qualifications Authority for student allowance and student loan purposes, with the exception of the Bachelor of Theology (Honours), the Postgraduate Certificate in Theology, the Postgraduate Diploma in Theology, and the Master of Theology (only student loans available) and Certificate of Proficiency (neither loans nor allowances available). Full-time and part-time domestic students may access student loans. However, student allowances are usually only available to students who are enrolled in at least 48 credits per semester (four courses) or 96 credits per year (seven courses). Student loans are usually only available to those who are enrolled in at least 30 credits per year (two courses). We encourage you to seek advice from StudyLink in regard to your access to loans and allowances based on your enrolment.

Student loans and allowances are processed and administered directly by StudyLink. Students who intend applying for student loans and/or allowances should contact StudyLink directly on 0800 889 900 or online at www.StudyLink.govt.nz.

We highly recommend students start the application process with StudyLink four to six weeks before the beginning of the semester.

Enrolment Documents and Payment of Fees

Close to the beginning of the semester some important documents will be forwarded to you. These include:

Public Trust Form

Laidlaw uses Public Trust to provide its fee protection services. Student fees are held in a trust account with Public Trust and released to Laidlaw gradually over the course of the year. Laidlaw will provide students with a Public Trust form to complete and sign in order to have these funds released. If any enrolment changes are made which lead to a change in fees, an updated version of this form will need to be signed.

In the second semester you won't need to complete a new form unless you did not study in the first semester or have changed some details affecting your fees.

Please see the Laidlaw Fee Schedule (www.laidlaw.ac.nz/fees) for full details.

National Enrolment Contract

It is a Ministry of Education requirement that we have a signed copy of this form on file. The Public Trust form and the National enrolment contract form both need to be signed and returned to Laidlaw. Please follow the instructions provided with the forms carefully.

Payment of Fees

You will receive an invoice for your fees and these must be paid by the due date. Please contact the Finance Office (financeoffice@laidlaw.ac.nz) for any queries relating to fees.

If a student loan is not being applied for, payment can be made by cheque, cash, EFTPOS, credit card or direct credit. Laidlaw's bank account details are included on all invoices. Fee payment dates must be strictly observed as penalties for late payments may apply. Please refer to the Laidlaw Fee Schedule (www.laidlaw.ac.nz/fees) for details.

If the signed Public Trust form and National Enrolment Contract have not been received and payment of fees has not occurred by the due date, it may not be possible to continue study at Laidlaw, and access to Moodle may be blocked.

Resources and Guides

There are several other key resources that students will need to refer to in addition to this handbook. These are:

General Resources

1. Laidlaw College website (www.laidlaw.ac.nz)

2. Moodle

This is Laidlaw's Online Learning Management System (learn.laidlaw.ac.nz), it is a web-based educational tool which is integrated with the course materials. It is a key part of the learning experience as it provides a 'virtual classroom' for online interaction. Students submit their assignments through Moodle, and receive them back there once they have been marked.

3. Postgraduate Handbook

This guide is essential for all students studying at postgraduate level, including the BTh (Hons), PGCertTh, PGDipTh, MTh and PhD.

4. General Information and Regulations

This important document details Laidlaw academic regulations and policies. It can be found online at www.laidlaw.ac.nz/prospectus-and-handbooks. It contains important study related information such as cross-crediting, assignment extension policies, what happens if a fail grade is received for an assessment, etc. Students are encouraged to familiarise themselves with the information and regulations contained in it.

5. Help for Study, Assignments and Exams

This resource area is available on Moodle under the **Studying@Laidlaw** menu (learn.laidlaw.ac.nz). It contains the following useful information:

- This resource is designed to help students to be successful in their studies and contains many helpful hints and guidelines about essay writing, how to study, etc.
- Assignment and research information
- The official guide to assignment writing
- A list of recommended websites for different subject areas

6. Course Outlines (COs)

These official course documents are available under the Course Outlines area under the Information tab on Moodle (learn.laidlaw.ac.nz). Course Outlines contain the course description and the learning outcomes associated with that course.

7. Course Assessment & Delivery Outlines (CADOs)

Each CADO* is specific to a campus or mode of delivery. It is crucial that students familiarise themselves with the information in these documents for each course they are studying.

CADOs can be found in Moodle on the Course page on the first day of the semester.

Support and Communication

Orientation

Laidlaw College is committed to the success of its students and seeks to provide appropriate support to this end. The first week of each semester has a requirement that all students studying on campus will attend Orientation. This is a time where new students will be made aware of the structure of student support and academic expectations. Students who complete Orientation will receive resources and system demonstrations preparing them for what is expected at Laidlaw College, and leave them better able to achieve their academic goals.

In order to ensure successful study all new students (those studying by distance and on campus) must complete a short online orientation course before their first semester of study. This free course, called "Studying@Laidlaw" is run as a distance learning course and exposes students to the techniques and expectations of study. This course is held in the first week of the academic semester for all students. It requires no more than 5 hours of study time and is conducted through Moodle using online interaction with a tutor.

Academic Support

Laidlaw's academic support is managed by the Centre for Learning (CFL). CFL provides academic support for all students, including those who are studying by distance learning. Our main goal is to help you succeed in your studies.

Contact us (studentsupport@laidlaw.ac.nz) if you need help with:

- an assignment
- essay writing
- Referencing
- Time management
- Exam preparation
- How to study effectively

We also hold a number of workshops throughout the year to help you in your study.

Email Communication Procedures

Laidlaw will provide Microsoft Office 365 to all students. All Laidlaw College students will be issued with a Laidlaw email address based on the student ID number (studentID@student.laidlaw.ac.nz). Student email addresses will be used by Laidlaw staff to communicate with students. Please note that all email correspondence from the College will be sent to this address once the account has been created.

It is the student's responsibility to ensure that emails are checked regularly. All communication forwarded to a student email address will be considered to have been received by that student.

Instructions for using the @student.laidlaw.ac.nz email address will be provided during Orientation.

Courses

Laidlaw **undergraduate courses** are 15 or 30 credits. Each credit approximates to 10 hours of total study time, so each 15 credit course will take about 150 hours of study or approximately 10 hours per week. This includes lectures if you are studying on campus or working through the course materials if you are studying by distance, the reading associated with the course, and all assessment tasks.

However, this is a guide only, and will vary somewhat from student to student, from course to course, and from week to week. In addition, while the 10 hour per credit guideline is designed to allow students to meet the learning outcomes of each course, students who wish to dig deeper into a subject and pursue further reading and research of their own will inevitably spend more time.

Each of our programmes can be studied either part time or full time. Students have the flexibility to choose from one course up to the full time load of four courses (60 credits) per semester. Full time study will require an average of 40-45 hours per week for study. Students must be realistic about how much study they are able to undertake alongside part-time or full-time employment. Students usually find that full-time employment makes it possible to study only one course per semester.

The majority of our courses are semester length, and begin in either late February or late July. Please see the Key Dates on the Laidlaw website.

Please see the Postgraduate Handbook for information regarding **postgraduate courses**.

Course Selection

When choosing courses students should consult with Academic Support (studentsupport@laidlaw.ac.nz) to develop a Programme of Study plan.

Developing a Programme of Study plan is essential, especially for students intending to complete the Bachelor of Theology degree, even if the Diploma of Christian studies will be completed first. Students can also seek advice from other Laidlaw staff as appropriate.

Returning students must complete their course selection by the required date at the beginning of each year of study, or by the required date prior to semester two if they did not study in semester one. If students intend to take a break from study for one or two semesters, then this intention must be communicated to Student Services.

The link to the Course Selection form can be found on the Laidlaw College website at www.laidlaw.ac.nz/apply/.

Limit on Study Load

In the interests of a student's academic success Laidlaw reserves the right to limit the number of courses a student may take in any given semester.

Students need to be aware that access to the student allowance may be compromised by such a restriction. It is the student's responsibility to be aware of these implications.

Making Enrolment Changes

To make changes to enrolment details a Change to Enrolment Form must be completed. This form is available on Moodle in the Forms area under the Information menu (learn.laidlaw.ac.nz). An application to change enrolment details will be approved by the School of Theology and submitted to Student Services.

This form can be used to apply to:

- Change or update your personal details
- Change, add or withdraw from a course
- Defer your studies for one to four semesters
- Change or withdraw from the programme you are enrolled in.

Please see the Laidlaw **General Information and Regulations** document (www.laidlaw.ac.nz/prospectus-and-handbooks) for Laidlaw's policies regarding changing, adding or withdrawing from courses.

For further assistance please contact Student Support at studentsupport@laidlaw.ac.nz.

Assessments

Each course will have several assessment tasks. Information regarding these assessments is found on the **Course Assessment and Delivery Outline (CADO)** for each course.

Formatting

All written work must conform to Laidlaw's **Guidelines for Written Assignments** document. This document offers detailed guidelines for the writing and formatting of written assignments, including how to format footnotes, references and bibliographies. It is available on Moodle and in the General Information and Regulations.

We encourage students to make wise use of the grammar and spell checks on their computer's word processor when preparing assignments.

Submission

All written assessments, apart from exams, are submitted and, once marked, returned through Moodle. Written assessments are automatically submitted to **Turnitin**, an online plagiarism detector, for checking.

Policy on late submission of assignments

If it is going to be challenging to finish an assessment on time, students may apply for an extension to the due date of the assignment. However, students need to be aware that extensions will normally be given only for reasons of ill-health (a medical certificate will be required) or on compassionate grounds because of unexpected events. Normally extensions will be given for no longer than two weeks and not normally past the end of the semester. Late or verbal requests will not be considered. It is expected that students manage their other commitments in such a way that submitting assignments on time is not jeopardized.

In these cases, we expect students to work with an academic support advisor and create an individual learning plan, to increase their overall chance of success. Please contact Student Support in this regard (studentsupport@laidlaw.ac.nz).

Students may apply for an extension using the online form on Moodle available from the Electronic Assignment Submission area on the course page. This will be approved or declined by the Academic Registrar and students will be notified by email.

Students cannot pass a course unless each piece of assessment has been seriously attempted.

Please see the Assessment and Grading section of Laidlaw's **General Information and Regulations** document for further details.

Graduation

Each year Laidlaw graduations are conducted in both Auckland and Christchurch (please check the Key Dates on the Laidlaw website for specific dates). In order to graduate a student must have completed all the requirements of the award.

Students must apply by 31 January for the graduation ceremony or by 31 October for the end of year graduation (no ceremony) to receive their certificate. Please apply online on the Laidlaw website (www.laidlaw.ac.nz/student-info/graduation). Students who are not attending a graduation ceremony still need to apply in order to receive their certificate.

Distance Learning students who are graduating are also encouraged to attend one of these events to receive their awards.



the
BIBLE
is our
STORY

JESUS
is our LORD

the
CHURCH
is our COMMUNITY



**“LAIDLAW IS A PLACE
WHERE YOU WILL BE
FORMED. IT’S A PLACE
WHERE YOU WILL BE
CHALLENGED, AND IT’S
A PLACE WHERE YOU
WILL BE SET UP
TO SUCCEED.”**

**Tekweni,
Postgraduate Student**



COURSE DESCRIPTIONS

Following is a list of the course descriptions for courses offered by the School of Theology. For a list of courses to be offered at each campus in a given year (including those delivered by Distance Learning), the scheduling of face-to-face courses, required texts and exams, please consult the Laidlaw website (www.laidlaw.ac.nz/student-info/timetables).

Please check the Laidlaw website (www.laidlaw.ac.nz/courses) for additional course offerings.

Laidlaw Fields of Study

- 100 Biblical Studies (incl. Languages)
- 200 Christian Thought
- 300 History of Christianity
- 350 Research
- 400 Spirituality
- 500 Pastoral and Contextual Studies
- 600 Cross-Cultural Mission
- 650 Marketplace Studies
- 800 Education
- 900 Counselling

Course Numbering and Credit System

The Laidlaw course numbering system follows this pattern:

- The first digit indicates the field of study (e.g. 1 = Biblical Studies, 8 = Education, 9 = Counselling).
- The second and third digits further define the level and/or subject area (e.g. 120 = Old Testament).
- The first digit after the decimal point indicates the National Qualifications Framework level.
- The second and third digits after the decimal point indicate the credit value of the course (e.g. 15 = 15 credits, 30 = 30 credits).
- One credit is equivalent to ten hours of learning.
A 15 credit course = 150 hours of learning.

100 Biblical Studies

106.515 HEBREW 1

This course is an introductory study of the grammar and vocabulary of Biblical Hebrew, and its application in translation and exegesis.

107.515 HEBREW 2

PRE-REQUISITE: 106

This course is a continuation of 106.515 Biblical Hebrew 1, the introductory study of the grammar and vocabulary of Biblical Hebrew, and its application in translation and exegesis.

Note: An online version of Logos will be required (approx \$660).

108.515 GREEK 1

This course is an introductory study of the grammar and vocabulary of Biblical Greek, and its application in translation and exegesis.

109.515 GREEK 2

PRE-REQUISITE: 108

This course is a continuation of 108.515, a study of the grammar and vocabulary of New Testament Greek, and its application in translation and exegesis.

Note: An online version of Logos will be required (approx \$660).

111.615/715 INTERPRETING THE BIBLE

This course is an introduction to biblical interpretation, grammatico-historical exegesis, biblical genres, historical developments, historical-critical and literary-critical methods, and hermeneutical considerations, including hands-on experience in exegeting biblical texts.

115.515 READING THE BIBLE

This course aims to introduce the broad shape of the biblical story and show how the Christian gospel is integral to biblical theology. It explores the unity, diversity and central themes of the Bible to make sense of the relationships between the Bible, theology, and all of life.

116.415 ENCOUNTERING THE BIBLE

This course introduces students to the Bible and explores the major themes that occur throughout Genesis to Revelation. It also shows how the Bible can be read so that it speaks into our lives, ministries, and workplaces.

120.515 READING THE OLD TESTAMENT

This course aims to develop and apply a broad understanding of Old Testament foundations, and their interpretation and application within church, mission, and community contexts.

122.615/715 PENTATEUCH

(ENGLISH OR HEBREW EXEGESIS)

PRE-REQUISITE: 120; PRE/CO-REQUISITE: 111

PRE-REQUISITES FOR HEBREW OPTION: 106 AND 107

This course engages students in detailed exegesis of the English [or the Hebrew] text of selected parts of the Pentateuch, as well as studies in the theology of the Pentateuch with particular focus on the book of Deuteronomy.

123.615/715 PROPHETS

(ENGLISH OR HEBREW EXEGESIS)

PRE-REQUISITE: 120; PRE/CO-REQUISITE: 111

PRE-REQUISITES FOR HEBREW OPTION: 106 AND 107

This course examines the nature of Old Testament prophecy, the language of prophecy, and the eighth century prophets with special reference to the book of Amos. Either a) exegesis of selections of the English text of Amos, or b) translation and exegesis of selections of the Hebrew text of Amos.

125.615/715 PSALMS

(ENGLISH OR HEBREW EXEGESIS)

PRE-REQUISITE: 120; PRE/CO-REQUISITE: 111

PRE-REQUISITES FOR HEBREW OPTION: 106 AND 107

This course studies the growth of the Psalter, its present shape, theological significance and emergence and use as the Bible's book of praise and prayer.

126.615/715 WISDOM

(ENGLISH OR HEBREW EXEGESIS)

PRE-REQUISITE: 120; PRE/CO-REQUISITE: 111

PRE-REQUISITES FOR HEBREW OPTION: 106 AND 107

This course explores the distinctive features of Old Testament wisdom and her texts, her key concerns, and her place in the life of faith, work and learning, ultimately to find that "the fear of the Lord is the beginning of wisdom and knowledge of the Holy One is understanding" (Prov. 9:10).

140.515 READING THE NEW TESTAMENT

This course aims to develop and apply a broad understanding of New Testament foundations, and their interpretation and application within church, mission, and community contexts.

143.615/715 GOSPELS 2 (JOHN)

(ENGLISH OR GREEK EXEGESIS)

PRE-REQUISITE: 140; PRE/CO-REQUISITE: 111

PRE-REQUISITES FOR GREEK OPTION: 108 AND 109

This course is an introduction to modern study of the Fourth Gospel, including key critical issues and approaches, as well as important literary and theological themes in the Gospel. There will be exegesis of selected English texts (English Option) or translation and exegesis of selected texts in Greek (Greek Option).

146.615/715 JESUS AND HIS TIMES

This course introduces students to the historical, geographical, political, economic, religious, and social world of first century Palestine with a view to how this informs our understanding of Jesus' life and message. Students will begin to work with primary sources used in historical Jesus study.

149.615/715 EPISTLES 1

(ENGLISH OR GREEK EXEGESIS)

PRE-REQUISITE: 140; PRE/CO-REQUISITE: 111

PRE-REQUISITES FOR GREEK OPTION: 108 AND 109

This course involves a study of the life setting, content and theological perspectives of the New Testament epistles. It focuses particularly on one New Testament writer (e.g. Paul), with a specific focus on exegesis of selected biblical texts and consideration of related theological themes.

150.615/715 GOSPELS 1 (SYNOPTICS)

(ENGLISH OR GREEK EXEGESIS)

PRE-REQUISITE: 140; PRE/CO-REQUISITE: 111

PRE-REQUISITES FOR GREEK OPTION: 108 AND 109

This course examines key themes in the synoptic gospels, Matthew, Mark and Luke, in relation to Jesus' mission and teaching, including the kingdom of God, parables, miracles and discipleship. Students will study of the text of a selected gospel, its theology, and relevant critical interpretative issues in relation to their own understanding of Christian faith and life.

200 Christian Thought

200.415 CHRISTIAN BELIEF

This course studies the story of God's dealings with creation and humanity. The course will help you understand selected doctrines and themes of the Bible, express them clearly in written English, and discover how they can affect your life.

201.515 ENGAGING THEOLOGY

This course aims to introduce systematic theology and teach learners to think theologically. It examines God's self-revelation, how we can understand that revelation, and why it is foundational for our faith. It then explores the arrangement of this revelation into a set of core beliefs and their application to everyday living.

202.615/715 CHRISTOLOGY

PRE-REQUISITE: 201

This course examines traditional and contemporary theologies of the person and work of Christ, theology of revelation and Scripture.

203.615/715 THE TRINITY

PRE-REQUISITE: 201

This course examines the existence and nature of the triune God; biblical overview of the person and ministry of the Holy Spirit; God in creation and providence; the problem of evil; humans made in the image of God; the nature and origins of sin; dialogue with some contemporary and scientific reflections on creation and humanity; angels and powers and principalities.

204.615/715 THEOLOGY: SALVATION IN HISTORY AND BEYOND

PRE-REQUISITE: 201

This course looks at: 1) Salvation in history: a biblical overview of the doctrines of sin, grace, justification, regeneration and conversion. 2) Salvation at the fulfilment of history: biblical and historical models of eschatology; contemporary issues in eschatology.

205.615/715 CHURCH: THEOLOGY & PRACTICE

PRE-REQUISITE: 201

This course introduces students to ecclesiology: biblical and historical perspectives. Attention will be given to the development of the church's self-understanding as the people of God and to a range of approaches to ministry and sacraments.

300 History of Christianity

307.615/715 HISTORY OF NEW ZEALAND CHRISTIANITY

This course is an in-depth survey of the development of Christianity in Aotearoa New Zealand, from the arrival of Samuel Marsden in 1814 until the present day.

308.515 THE STORY OF CHRISTIANITY

This course offers a survey of major developments in the history of Christianity from the early church through to the 21st century with attention to the life and thought of key individuals.

309.615/715 A HISTORY OF EVANGELICALISM

This course explores the history of the Evangelical movement, from its emergence in eighteenth and nineteenth century Britain to its present global reach, and articulates Evangelicalism's distinctive theological and missional character in the contemporary context and in Aotearoa.

312.515 NGĀ HUNGA HOHOURONGO (THE GOSPEL PEACEMAKERS)

To explore Māori responses to the introduction of Te Rongopai—the Gospel—to Māori society. The message of the Gospel contends with utu, war, and the law/lore of tapu. Initially, chiefly mana resisted any Christian pacifist ideas which were seen as a part of conversion. This course provides an overview of 'peace-orientated Christianity' and its impact on Māori society through the agency of the bible as a book of peace.

210.615/715 RELATIONAL AND BIBLICAL APOLOGETICS

PRE/CO-REQUISITE: 201

This course looks at such issues as: the appeals to reason, evidence, experience, revelation and faith in apologetics: the role of 'points of contact': popular excuses for avoiding or rejecting Christianity: the existence of God; the problems of evil and suffering; alternatives to the Christian faith in a pluralist world; the relationship of the faith to the wider spheres of human knowledge - especially history, the social sciences and scientific method; the debates over creation and evolution; the central roles of Christ and Christian Scripture. The course aims both at answering objections and also at building bridges for the Gospel of Christ.

211.615/715 THEOLOGICAL ETHICS

PRE-REQUISITE: 201

This course introduces students to ethical decision-making and Christian ethics, including the biblical underpinnings of ethics, morality, justice, and virtue. It is also an introduction to individual and social ethics, and concepts of justice, virtue and vice.

212.615/715 ECOLOGICAL MISSION

This course examines the biblical and scientific narratives with regard to the interconnectedness within nature, and reflects upon the current ecological state of the planet. Engaging with biblical, historical and contemporary theologies of nature, the course then explores the Christian rationale for sustainability offering a framework for ecological ethics and practices consistent with caring for creation. This is a joint venture between Laidlaw College and A Rocha.

Note: \$300 extra cost for accommodation. Travel will be coordinated in Week 2 and the cost is the student's responsibility.

216.415 BASICS OF CHRISTIAN BELIEF

This course introduces students to key ideas and concepts that form the heart of Christian belief. Students will examine how these ideas fit together and shape Christian life and faith, and how they can interact with the wider community.

351.715 RESEARCH TOPIC 1:

CHRISTIAN THOUGHT AND HISTORY

This course provides an opportunity for preparing an extended research paper of 6,000 – 8,000 words on a topic not specifically covered elsewhere in a student's programme of study. It requires the development of research skills and the ability to present a sustained argument on an issue of some complexity. A Research Topic may be proposed in any of the following subject areas: Bible, Theology, or History. The research topic may only be undertaken with the approval of the head of school or delegate.

352.715 RESEARCH TOPIC 2: PRACTICAL THEOLOGY

This course provides an opportunity for preparing an extended research paper of 6,000 – 8,000 words on a topic not specifically covered elsewhere in a student's programme of study. It requires the development of research skills and the ability to present a sustained argument on an issue of some complexity. A Research Topic may be proposed in any of the following subject areas: pastoral theology, practical theology, or missiology. The research topic may only be undertaken with the approval of the head of school or delegate.

400 Spiritual Formation and Internship

401.515 FORMATION

This course aims to help learners reflect on personal and communal spiritual formation, through engagement with Scripture, theological understandings and a variety of Christian spiritual traditions. This reflection will include (1) evaluation of key aspects of their own formation, (2) evaluation of their experiences of personal and communal strategies intended to facilitate spiritual growth, and (3) the development of spiritual practices which will strengthen their contribution to enhancing human wellbeing within their own social and cultural contexts.

403.615/715 SPIRITUALITY FOR MINISTRY

PRE-REQUISITE: 401

This course builds on the topics and spiritual disciplines introduced in 401 Formation. The focus is on developing approaches to life and ministry which will help to maintain balance, sustainability and growth in ourselves and others. The term "ministry" here has the broad sense of using our gifts and our time for God's service, whatever our context.

406.615/715 MODELS OF SPIRITUALITY

PRE-REQUISITE: 401

This course explores a variety of significant traditions within Christian spirituality, including their biblical and historical origins, and considers their contribution to spiritual life in the contemporary world.

407.515 DISCIPLING PASIFIKA COMMUNITIES

To explore the expertise and skills required for effective discipleship in the local church, local community, and/or global missions within a variety of Pasifika contexts. Students will develop an understanding of the practical dimensions of Christian ministry by collaborating with Pasifika role models in church environments and professional vocations. This course prepares students to minister effectively in Christian missions and inter-cultural communities.

416.415 DISCIPLESHIP

This course will introduce students to aspects of discipleship through engagement with Scripture, personal reflection, academic enquiry and spiritual exercises.

460.515 JOURNEYING INTO MINISTRY

PRE/CO-REQUISITE: 15 NON-INTERNSHIP CREDITS

This course introduces students to foundational personal management knowledge to support their discipleship journey into ministry to serve the church and the community.

463.615 MINISTRY IN CONTEXT

PRE-REQUISITE: 460 AND 75 NON-INTERNSHIP CREDITS

This course offers an intensive exploration of the minister's sense of call in relation to their current ministry and local context. Contextual theory meets practice through the experience of ministry, mentoring, specific models of reflective practice, and a formal exploration of the student's current context supported by integrative tutorials.

464.615 LEADERSHIP DYNAMICS

PRE-REQUISITE: 460 AND 75 NON-INTERNSHIP CREDITS

This course explores interpersonal dynamics in leadership. Leadership theory meets practice through the experience of ministry, mentoring, specific models of reflective practice, an examination of the student's own leadership style and integrative tutorials with a specific focus on communication, group dynamics and leadership styles.

466.715 PHILOSOPHY OF MINISTRY

PRE-REQUISITE: 463 AND 464 AND 150 NON-INTERNSHIP CREDITS

This course seeks to draw together student's prior internship courses, and wider academic learning through the formulation of a personal philosophy of ministry. Ministry experience along with formal reflection will foster the clarification of ministry skills, knowledge and personhood while integrative tutorials seek to prepare students to transition into new ministry environments.

472.430 MINISTRY INTERNSHIP I

This course offers an introduction to personal development and the principles of self and task management within your ministry context. It seeks to foster reflection on the attributes and character of a leader by exploring qualities necessary for service that empowers others.

473.430 MINISTRY INTERNSHIP II

This course offers an extension of Ministry Internship I by seeking to strengthen organisational skills through service in a selected area within your ministry context. Students reflect on your own sense of call in relation to personal strengths.

474.530 LEADERSHIP INTERNSHIP I

This course aims to evaluate Christian leadership models within the context of church, mission, and community ministries. Interns will build, lead, and contribute to teams in a way which reflects their sense of call and personal strengths, and through the application of leadership practices that enhance the goals of their chosen ministry.

475.530 LEADERSHIP INTERNSHIP II

This course aims to apply a range of key Christian leadership skills to develop and lead a team. The intern will plan and execute an assigned ministry project which will contribute to the goals of a church, mission, or community ministry.

476.515 LEADERSHIP INTERNSHIP I (FULL YEAR)

To evaluate Christian leadership principles within the context of church, mission, and community ministries. Learners will build, lead, and contribute to teams in a way which reflects their sense of call and personal strengths, and also through the application of leadership practices that enhance the goals of their chosen ministry.

478.615 PRACTICUM I

This course aims to build ministry awareness, leadership resilience, and competence in a field of the student's choosing. Students are given scope to engage in an area of ministry or vocation in order to develop their proficiency in that field through reflective practice and field-based experience. The course focuses on embodied learning where specific fieldwork-related competencies are aligned to a student's practicum goals.

479.715 PRACTICUM II

This course aims to build ministry critical awareness, leadership resilience and competence in a field of the student's choosing. Students are given scope to engage in an area of ministry or vocation in order to develop their proficiency in that field through reflective practice and field-based experience. The course focuses on embodied learning where specific fieldwork-related competencies are aligned to a student's practicum goals.

480.615/715 FAITHFUL LIVING: INTRODUCTION TO REFLECTIVE PRACTICE

This course explores the dispositions and practices that are required to form life-long reflective practitioners. Students are introduced to a range of models of theological reflection and will evaluate and apply these within their context. Key theological themes and practices underlying ethical behaviour are explored and students will develop a contextualised code of conduct. Students are prompted to develop self- and other- awareness, and build resilience to the experience of receiving and processing feedback from others.

491.415 LITERACY AND COMMUNICATIONS SKILLS

This course will prepare students with foundational literacy, collaboration and communication skills that will prepare them for ongoing tertiary study or other career paths.

492.415 MANAGING YOUR LEARNING

This course will prepare students to understand their approach to learning and to equip them with skills to strengthen their academic competencies in the future, including the abilities to collaborate, communicate, and manage personal learning.

500 Pastoral and Contextual Studies

500.515 CONNECTING WITH YOUTH & YOUNG ADULTS

This course introduces students to biblical and theological foundations for youth ministry, including effective and sustainable youth ministry, engagement with theory and practical approaches, and responses to the pastoral needs of young people.

505.515 CHRISTIAN LEADERSHIP & MISSION

This course aims to explore and evaluate a range of mission, church, and community-based programmes and applies faith-based principles in Aotearoa New Zealand and beyond. Learners will reflect on how personal and communal expressions of faith can enhance the wellbeing of others in a range of social and cultural contexts.

506.415 FAITH IN ACTION

This course will introduce students to a range of different contexts where Christian faith is being lived out. Students will be introduced to a model of action-reflection to assist them in connecting faith and life in their own context and contexts of others.

511.615/715 PASTORAL CARE IN COMMUNITY

This course is an introduction to the principles and practices of pastoral care in, through and beyond the local church. The course is grounded in vision of community as a paradigm for transformation and carries a fundamental commitment to care of the whole person. Within this relational frame, various approaches to pastoral care, care in life's stages and transitions as well as care of the carers will be explored.

513.615/715 PASTORAL CARE IN LIFE'S CRISES

This course explores pastoral approaches to significant life crises, including experiences of loss, death and dying, getting married, divorce, alcoholism, mild depression, past hurts, and developmental issues.

520.715 FORMATIVE ANGLICANISM AS MISSIONAL CHURCH

This course explores Anglican 'DNA' through a study of the formative period, investigating the rationale and nature of innovations and changes introduced at this seminal time. The course identifies the theological and 'missional' thinking that gave shape to the sense of purpose and calling of the English Church and where this might take us in addressing the challenges of our present context.

521.715 PIONEERING AND PASTORAL: CONTEMPORARY EXPRESSIONS OF ANGLICAN MINISTRY

This course addresses the need to clarify the relationship between ministry by all the baptised and the specific responsibilities associated with each of the threefold Anglican modes of ordained ministry: deacons, presbyters (or priests), and bishops. Each of these ministry orders is reviewed from biblical, historical and theological perspectives, identifying distinctive characteristics and spheres of ministry focus or responsibilities. Questions of the parish model, alternative models of ministry, team ministry, and side relationships of support, resourcing and accountability are all addressed.

522.715 ANGLICAN WORSHIP: LITURGICAL SHAPE AND SPIRITUAL DEPTH

This course explores the nature and shape of liturgy in relation to a theology of Anglican worship. It presents a theological framework for a critical analysis of historical and cultural patterns shaping the form and content of Anglican worship and liturgy. The course also involves the development of skills for constructing authentic contemporary evangelical Anglican liturgy in the light of a sound Trinitarian theology of worship.

525.615 ANGLICAN BICULTURAL MISSION

This course is designed to inform and up-skill students who do not have a strong connection Māoritanga and Tikanga, with the purpose of enabling them in connecting with and ministering within the Tikanga Māori environment of the Anglican Church and to enable the pursuit of bicultural mission at a local level. The course firstly involves an introduction to basic Te Reo, including fundamentals for Anglican Māori settings and then moves to a closer engagement with Anglican Tikanga partnership, and particularly with questions relating to the pursuit of bicultural mission partnership. A week immersed in a predominately Māori Anglican setting is a central feature of this course. The course assumes a certain familiarity with Anglican Church history in Aotearoa.

530.515 MINISTRY WITH CHILDREN AND FAMILIES

This course will explore the premises underlying practices in children's ministry, by considering the Bible's portrayal of children, developmental issues and theology. It will then explore the implications for practice with respect to evangelism and discipleship, programme planning and pastoral care.

533.515/615 MINISTRY AMONG CHILDREN

This course explores the premises underlying practices in children's ministry, by considering the Bible's portrayal of children, developmental issues and theology. It will then explore the implications for practice with respect to evangelism and discipleship, programme planning and pastoral care.

535.615/715 FAMILY LIFE MINISTRY

This course explores the family as an educative unit; biblical expectations. Family systems theory and genogram development. Contemporary families: pressures and trends. The church and the family: responsibilities and opportunities. Intergenerational and family services. Christian parenting. The Christian family in society. The pastor and the family.

540.715 MAKING DISCIPLES THAT LAST

This course explores the key relational aspects of effective youth ministry with an emphasis on developing young people personally and spiritually. Students will gain a deeper understanding of relationships between aspects of youth culture and the discipleship of young people. Topics covered in the course include biblical and theological understandings of discipleship, cultural and personal identity formation, family dynamics, adolescent human development, and appropriate communications and mentoring strategies.

542.615/715 YOUTH MINISTRY LEADERSHIP

This course explores the topic of leadership in youth ministry with an emphasis upon developing sustainable leadership practices. Topics covered in the course include: biblical and theological reflection on leadership; personal and communal practices to support effective and sustainable leadership; risk management; management and teamwork; and nurturing new leaders.

550.615/715 THEOLOGY & EXPERIENCE OF DISABILITY

This course surveys the ways the experience of disability is understood both in the church and beyond. Biblical Texts and doctrines relating to disability are then investigated, before considering how we might minister effectively in the context of disability.

561.615 INTRODUCTION TO PREACHING

This course helps prepare students to preach biblical sermons that witness to the Good News of Jesus Christ. Preaching is an event where we participate with the triune God in faithfully proclaiming the Gospel so that people may faithfully respond.

568.615/715 THEOLOGY AS WORSHIP

This course is an introduction to the theology and practice of Christian worship, historically and in contemporary settings. Students will engage with a range of liturgical expressions in order to inform the development of a contextualised theology and practice of worship in their own setting.

575.615/715 PASTORAL LEADERSHIP

This course explores the integration of biblical, theological and management perspectives for church ministry. Students will critically evaluate a range of approaches and work toward a personal philosophy of church leadership and management.

579.515 NGĀ HUNGA MAIA (FAITH-LED MĀORI LEADERSHIP)

To examine the impact of the Bible and the Gospel message on both traditional and contemporary Māori leadership. It will explore the influence of early Māori Christian evangelists in changing traditional leadership roles and the continuation of Māori faith-led leadership in contemporary iwi, hāpori, and hāhi transformation.

600-39 Cross-Cultural Mission

603.615/715 CULTURAL ANTHROPOLOGY

This course offers an introduction to cultural anthropology as an aid to mission and ministry in multi-cultural contexts. The course focuses on the use of anthropological tools and concepts as a means of understanding one's own culture and being able to engage effectively with people in other cultural settings.

605.615/715 BIBLICAL AND CONTEMPORARY THEOLOGY OF MISSION

This course considers what a biblical theology of mission is and examines the application of the Bible to contemporary issues in mission. It also provides an overview of how these issues were debated through some of the major mission conferences in the twentieth century. It provides an opportunity to integrate biblical, theological and other studies for mission in today's world.

607.615/715 CHRISTIANITY AND OTHER RELIGIONS

This course is an introduction to the Christian study of World Religions, theology of religions and issues relating to pluralism, community relationships, dialogue and evangelism. An introduction to primal religions, Islam, Eastern religions such as Hinduism and Buddhism, as well as alternative or neo-pagan spiritualities in Western contexts. The course balances sympathetic appreciation, understanding and sensitivity with positive evangelistic commitment.

608.615/715 SURVEY OF ISLAM

This course provides students with a general knowledge of Islamic history, with particular reference to Southeast Asian and Australasian contexts, as well as the core doctrines and the institutions of the Islamic faith. It also considers contemporary developments and trends in global Islam and introduces students to the principles and methods of Christian-Muslim relations.

611.515 INTERCULTURAL STUDIES: INTRODUCTION

This course aims to examine how culture, context and theological understanding influences engagement in intercultural ministry and mission. This prepares learners for church, mission or community leadership and direction in Aotearoa New Zealand and beyond.

612.615/715 MAJORITY WORLD THEOLOGY

This course offers an introductory look at 'local' theologies. It considers how cultures bring differences of emphasis and insight into their reading of Scripture and ways in which evaluation is still required and possible as the Gospel is related to the worldviews of particular contexts.

615.615 MISSION IN PRACTICE

This course examines specific practical issues that cross-cultural workers face in ministry. It covers such subjects as 'the call', entry and re-entry, culture shock, relationships with other colleagues, the local church, government and the home church, as well as authority, spiritual warfare, business as mission, being single or married, communication, stress and time management.

617.615/715 MERCY, JUSTICE AND SOCIAL TRANSFORMATION

This course identifies the theological and global realities of suffering, injustice and need. It affirms the holistic nature of God's mission to the world and the call to express mercy and justice, seeking to bring social transformation through community, national and international aid and development. This course seeks to develop creative approaches to holistic social transformation through engagement with theology, history and contemporary interventions.

640-59 Māori Studies

647.615/715 WAIRUATANGA

This course explores Christian indigenous interpretations of the interface of the spiritual and the material (wairuatanga). Insights are drawn from a range of sources including Māori prophetic and church traditions, Māori art, literature and film, the Old Testament prophetic tradition, and the New Testament. It upholds that awareness of spiritual/material interdependence through the Gospel and Te Ao Marama (creation) offers insight to healing and wellbeing.

648.615/715 MĀORI PERSPECTIVES ON GALATIANS

This course explores the ways Paul's letter to the Galatians opens up dynamics at work when the Gospel of Christ encounters Māori culture and indigenous values and beliefs. The course gives attention to the way faith in Christ fulfils and transforms our approach to the Old Testament and traditional belief systems. While developing and applying indigenous exegetical methods the course also addresses major issues of Gospel and culture interaction and contextualisation.

649.515 WHAKAPAPA O TE ATUATANGA (GENEALOGY AND GOD)

This course introduces the kaupapa Māori concept of whakapapa (Atua/whenua/tangata) as a foundation for Māori and indigenous theology. It provides a framework for right relationship and ethical action based on Gospel narratives, tracing whakapapa through the Old Testament and leading to the Incarnation, Redemption, and Mission.

650.615/715 MĀORI CHURCH/COMMUNITY LEADERSHIP

This course examines traditional and contemporary Māori society and leadership structures and styles within iwi, community, and church contexts. It identifies significant Māori leaders from the 19th, 20th and 21st centuries who impacted tribal transformation and explores how the combination of Christian theology and cultural values and practices influences Māori leadership in the renewal of community.

651.615/715 INDIGENOUS POSTCOLONIAL THEOLOGY

This course studies indigenous postcolonial theologians' critiques of the historical and continuing relationship between Christianity and empire. It also explores how postcolonial theologies correspond with Māori theological principles and models and how diverse contexts draw on common strengths and solidarity.

652.615/715 TIKANGA-A-TANGATA

This course studies how cultural patterns shape all areas of our lives and experience. It explores how traditional Māori cultural systems of meaning and belief engage with Christian systems of meaning and belief and how each informs and challenges the other toward transformation in Aotearoa.

653.715 TIKANGA RANGAHAU

Working closely with the course co-ordinator this course offers the opportunity for in depth individual research on a particular aspect of Māori theology studied in the indigenous courses. The aim is to identify and become familiar with resources on the chosen topic, to strengthen knowledge base, and to comment and critique on findings.

660-99 Marketplace Studies

665.615/715 THEOLOGY OF WORK

This course explores the biblical and theological concept of calling in the light of the centrality of Christ. It examines historical developments in the understanding of vocation, work and ministry and different approaches to vocational guidance related to work and ministry in the community of faith and the world. Students will examine their own sense of calling and seek to clarify the nature of that call. It will also look at the role of the church in resourcing Christians for ministry in daily life.

800 Education

857.515 HUMAN DEVELOPMENT

This course surveys contemporary understandings of human development in conversation with Christian theological descriptions of human being.

900 Counselling

907.515 BICULTURAL RELATIONS: TIKANGA KAWENATA

People of all cultures draw their own self-knowledge from their engagement with other people and the world. In the Aotearoa New Zealand context this means an honouring of the covenantal spirit of the Treaty of Waitangi and an awareness of its relational intent. This course introduces Tikanga Maori on the basis of understanding people in their contexts, and combines theological, theoretical and historical reflection with the development of practices drawn from an integration of these. The course includes regular oral activities aimed at developing fluency in the use of te reo and tikanga in a range of settings. The culmination of this oral learning is participation in the Noho Marae, where an overnight stay on a marae provides an integrated opportunity to engage with Maori culture beyond the classroom.

921.615/715 THEOLOGY OF SUFFERING AND HOPE

This course explores questions about human suffering and the God who engages with humans at the level of their despair. It engages with how the scriptures acknowledge human suffering, and looks at hope from a biblical/theological/anthropological/relational perspective.



APPENDIX

Internship Regulations

Internship programmes at Laidlaw College are designed to provide students with academic learning and practical experience in the context of church, cross-cultural ministry or community ministry, with the primary goal of integration. The goal of internship training is to see interns well prepared for life, mission and ministry through personal development, to know themselves and their context well, and to understand their ministry in light of the overarching redemptive story of the Bible. It will help students relate well, communicate well, lead well, and think well within their context and culture.

Internship is ideal for students wishing to maintain hands-on involvement in ministry while studying the one-year Diploma in Christian Studies (DipCS). A one year placement is a valuable option for BTh students planning to pursue a mission or ministry career following their studies.

The Internship Structure

Internship students are required to complete the core academic courses of their programmes (see relevant sections for these details) as well the following:

- BTh students may complete up to a maximum of 30 credits of Internship courses.
- DipCS (Christian Leadership) must complete 60 credits of Internship courses.

Provision is made for students who have prior experience in mission or ministry, or who have completed ministry modules in other Christian training institutions, to enter internship at level 6.

Selection of Internship courses is to be completed in consultation and with the approval of the Internship Coordinator.

Internship Course Requirements (except for DipCS (Christian Leadership))

Each 15-teaching-week semester of an Internship course consists of a minimum of eight hours per week of practical ministry involvement. In addition students will engage in an average of 4.5-5 hours per week of assignment work, reflective practice, integrative tutorials and individual mentoring meetings.

Internship courses are designed to build on one another and where possible should be enrolled in sequentially. Students may complete internships in the context of a church, a cross-cultural ministry or a community ministry. All placements, mentors and supervisors must be approved by the Internship Coordinator prior to the commencement of the student's first Internship course. Students may not enrol in an internship course after the first day of a given semester.

Pre-requisites

In order to maintain the integrity and objectives of the internship programme students enrolled part-time are required to observe the following:

- Level 5: Each internship course must have one non-internship course successfully completed or enrolled in concurrently.
- Level 6: 15 internship credits at level 5 + 75 credits of non-internship courses successfully completed.
- Level 7: 30 internship credits at level 6 + 150 credits of non-internship courses successfully completed, 75 of which must be at level 6 or above.

Part-Time Internship Students

Those with high commitments alongside their study may consider the following options:

- Organising a regular ministry commitment that involves weekends and/or evenings such as involvement in youth, children, small groups, groups associated with mission organisations (e.g., support groups; work with migrants) or in the marketplace (e.g., mentoring; chaplaincy – which may be completed outside of regular work hours) **OR**
- Splitting the eight hours per week commitment. This option would require the student to commit a portion of their hours to a regular weekly placement (e.g. 4-5 hours, allowing for ongoing supervision) but would also enable them to set aside a block of time during the semester to fulfil their ministry commitments, e.g. through involvement in a camp, school holiday programme or mission trip. Consideration will be given to any proposal offered provided it has the support of the organisation with which the student is placed and offers sufficient opportunity for ministry development.

For further details of course requirements refer to the DipCS and BTh sections of this handbook.

EXPERIENCE IT FOR YOURSELF

Want to find out more?

Plan a Visit

There's no better way to find out what Laidlaw College is like, than to see it for yourself! Come and be a "Student for a Day" on any of our campuses and experience firsthand what our classes, staff and great community are like. We'd love to meet you!

To become a "Student for a Day" contact us by calling 0800 999 777 or email info@laidlaw.ac.nz.

Check out our website

The Laidlaw website was designed especially for potential students. You will find some great audio-visual content and all the information you need about our programmes, staff, campuses and facilities. You can also visit our Facebook page to find out what's happening at Laidlaw College on a day-to-day basis.

Attend Events on Campus

We frequently host events that are open to the public, so if you live in Auckland or Christchurch, this is a great way to begin participating in College life. For those who can't be with us in person, we often film events or interviews with visiting scholars. Keep an eye on the website and our Facebook page to find out about upcoming events and recently uploaded videos.

Ready to Apply?

If you've decided on a programme of study and you're ready to apply, you can apply online by visiting www.laidlaw.ac.nz

For information about fees, please see the full Fee Schedule online at www.laidlaw.ac.nz/fees
If you still have questions and would like to talk to someone, please contact us by calling 0800 999 777 or email info@laidlaw.ac.nz.



GRADUATION

The graduation ceremony is the climax of our academic year. Together we give thanks to God, celebrate student achievement and make an ongoing commitment to partner with graduates as, through their work and contribution to society, they seek to bring renewal to communities throughout Aotearoa New Zealand and nations around the world.

**HENDERSON
& DISTANCE LEARNING**

P +64 9 836 7800
E henderson@laidlaw.ac.nz

80 Central Park Drive, Henderson
Private Bag 93104, Henderson
Auckland 0650, New Zealand

MANUKAU

P +64 9 905 4960
E manukau@laidlaw.ac.nz

20 Amersham Way, Manukau
PO Box 97704, Manukau City
Auckland 2241, New Zealand

CHRISTCHURCH

P +64 3 354 4270
E chch@laidlaw.ac.nz

70 Condell Avenue, Papanui
Christchurch 8053, New Zealand



www.laidlaw.ac.nz | info@laidlaw.ac.nz | 0800 999 777



**LIDLAW
COLLEGE**
TE WANANGA AMORANGI